



## New ConTex Container Ship Time Charter Assessment Index

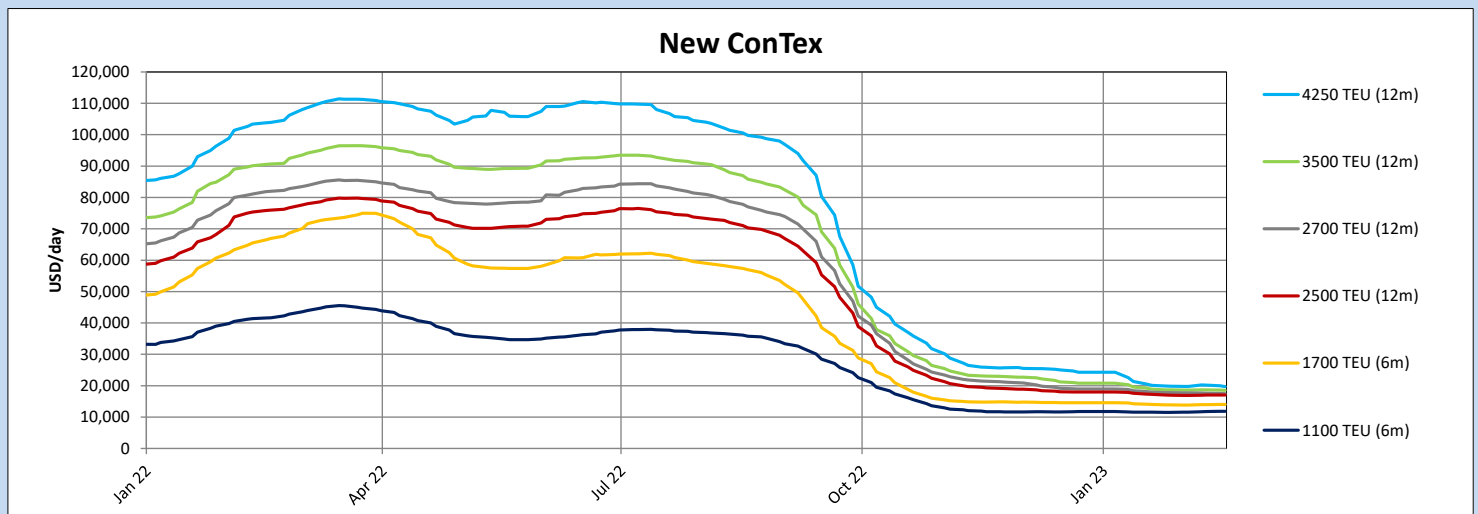
New ConTex*		733	
16.02.23		6 mos	12 mos
Geared	1100 TEU	\$11,865	n.a.
	1700 TEU	\$14,046	
	2500 TEU	\$17,059	
Gearless	2700 TEU	n.a.	\$17,434
	3500 TEU		\$18,543
	4250 TEU		\$19,740

Legend		
↑	up	+ 2% or more
↗	steady up	from +1% to +1,9%
→	steady	+/- 1%
↘	steady down	from -1% to -1,9%
↓	down	- 2% or less

\*New ConTex evaluation is EXCLUDING 1100/1700/5700/6500 TEU groups for 12 months period & 2500/2700/3500/4250 TEU groups for 24 months period

New ConTex-Commentary - issued:	16.02.23
<p>The New ConTex decreased by 2 points this week. The sideways movement has been going on for some weeks now, similar to other market indices.</p> <p>Modest gains week-on-week can mainly be seen for the smaller feeders and this is where most of the action is right now. Since Chinese New Year, activity has picked up tremendously for the 1100 TEU and 1700 TEU segments with many regional operators back in the market, trying to regain market share. A similar situation can be seen in the Atlantic but here it meets a comparably tighter supply of ships, especially for geared units. And so we have seen the good old CV 1100 designs fixing strong rates with a 13' or even 14' in front recently.</p> <p>Looking at bigger segments it is a bit more muted. Supply of ships is actually very limited as well, but a couple of spot 2700 TEU units have done some deals recently which will probably pull index figures a bit lower next week. Panamaxes have now established rate levels below the USD 20k mark and post panamaxes had a very eventless week without any reported fixtures.</p> <p>Overall, there is a certain hope that the thriving smaller feeders may soon spark some momentum also for the bigger ships.</p>	

New ConTex Development											
Vessel type	Evaluated Period	Today	Week-on-Week		Month-on-Month			Year-on-Year			
		16.02.23	09.02.23	Change	Change	17.01.23	Change	Change	17.02.22	Change	Change
<b>New ConTex*</b>		<b>733</b>	735	-2	↔ -0.3%	746	-13	↘ -1.7%	3344	-2,611	↘ -78.1%
1100 TEU	6 mos	\$11,865	\$11,746	\$119	↗ 1.0%	\$11,575	\$290	↑ 2.5%	\$41,671	-\$29,806	↘ -71.5%
	12 mos	\$11,050	\$10,954	\$96	↗ 0.9%	\$10,629	\$421	↑ 4.0%	\$36,567	-\$25,517	↘ -69.8%
1700 TEU	6 mos	\$14,046	\$13,998	\$48	↗ 0.3%	\$14,100	-\$54	↘ -0.4%	\$66,921	-\$52,875	↘ -79.0%
	12 mos	\$13,321	\$13,288	\$33	↗ 0.2%	\$13,446	-\$125	↘ -0.9%	\$59,588	-\$46,267	↘ -77.6%
2500 TEU	12 mos	\$17,059	\$17,032	\$27	↗ 0.2%	\$17,341	-\$282	↘ -1.6%	\$75,968	-\$58,909	↘ -77.5%
	24 mos	\$14,623	\$14,664	-\$41	↘ -0.3%	\$15,086	-\$463	↘ -3.1%	\$55,059	-\$40,436	↘ -73.4%
2700 TEU	12 mos	\$17,434	\$17,575	-\$141	↘ -0.8%	\$18,105	-\$671	↘ -3.7%	\$82,014	-\$64,580	↘ -78.7%
	24 mos	\$15,341	\$15,464	-\$123	↘ -0.8%	\$15,868	-\$527	↘ -3.3%	\$60,005	-\$44,664	↘ -74.4%
3500 TEU	12 mos	\$18,543	\$18,668	-\$125	↘ -0.7%	\$19,225	-\$682	↘ -3.5%	\$90,655	-\$72,112	↘ -79.5%
	24 mos	\$16,420	\$16,538	-\$118	↘ -0.7%	\$16,935	-\$515	↘ -3.0%	\$70,280	-\$53,860	↘ -76.6%
4250 TEU	12 mos	\$19,740	\$20,170	-\$430	↘ -2.1%	\$20,550	-\$810	↘ -3.9%	\$103,930	-\$84,190	↘ -81.0%
	24 mos	\$17,595	\$17,865	-\$270	↘ -1.5%	\$18,490	-\$895	↘ -4.8%	\$80,560	-\$62,965	↘ -78.2%
5700 TEU	12 mos	\$26,656	\$26,722	-\$66	↘ -0.2%	\$28,944	-\$2,288	↘ -7.9%	\$119,656	-\$93,000	↘ -77.7%
6500 TEU	12 mos	\$31,094	\$31,600	-\$506	↘ -1.6%	\$35,750	-\$4,656	↘ -13.0%	\$126,733	-\$95,639	↘ -75.5%



Disclaimer

The brand NewConTex is copyrighted by Verband Hamburger und Bremer Schiffsmakler e.V. ("VHBS e.V.") and is protected by law. The NewConTex may be published only with the source reference © VHBS e.V. It is distributed to the general public for information purposes only and cannot be relied upon as a trading recommendation and does not constitute a solicitation to trade. The reported information is obtained from market sources. While every effort has been made to ensure the accuracy and the completeness of the NewConTex, VHBS e.V. makes no representations, conditions or warranties of any kind, express or implied, about the completeness, accuracy, reliability, or suitability of the NewConTex. Any reliance you place on the NewConTex is therefore strictly at your own risk. Neither VHBS e.V. nor any of its subsidiaries or affiliates nor any employee of the foregoing shall be liable or have any responsibility for any loss, liability or damage, cost or expense including without limitation, indirect or consequential loss or damage, or any loss or damage whatsoever arising from loss of data or profits arising out of, or in connection with, the use of and the reliance on the NewConTex, save for death or personal injury arising from VHBS e.V. negligence and fraudulent misrepresentation that cannot, under German law, be excluded.