

New ConTex Container Ship Time Charter Assessment Index

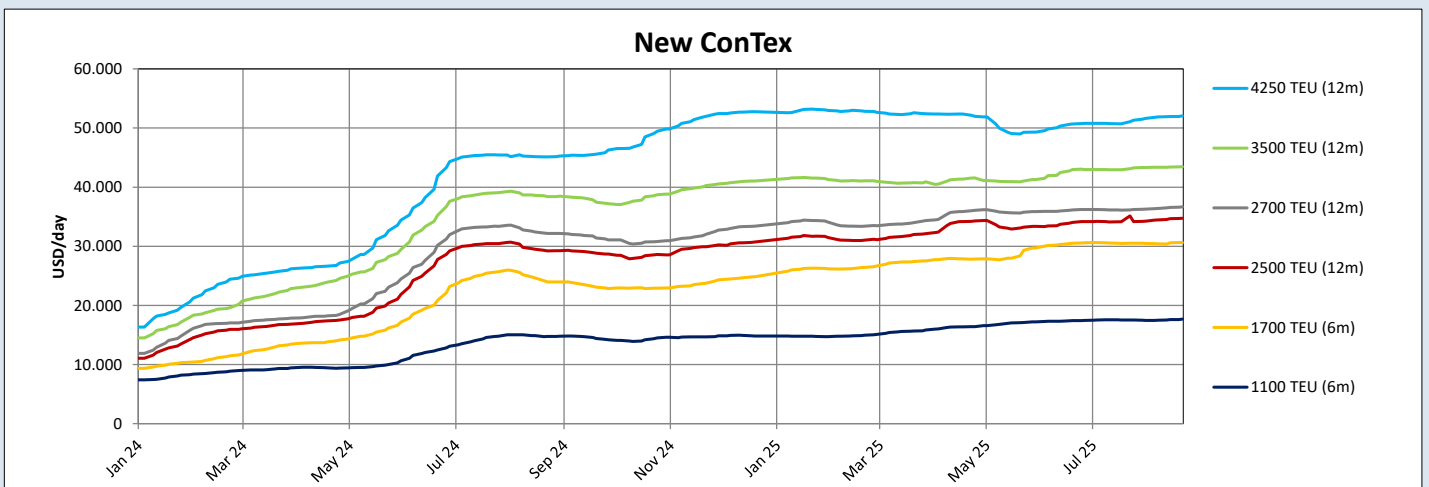
New ConTex*		1545	
21.08.25		6 mos	12 mos
Geared	1100 TEU	\$17.682	n.a.
	1700 TEU	\$30.627	
	2500 TEU		
Gearless	2700 TEU	n.a.	\$34.750
	3500 TEU		\$36.664
	4250 TEU		\$43.440
			\$52.055

Legend		
↑	up	+ 2% or more
↗	steady up	from +1% to +1,9%
→	steady	+/- 1 %
↘	steady down	from -1% to -1,9%
↓	down	- 2% or less

*New ConTex evaluation is EXCLUDING 1800 TEU for 6 months period, 1100/1700/5700/6500 TEU groups for 12 months period & 2500/2700/3500/4250 TEU groups for 24 months period

New ConTex-Commentary - issued:		21.08.25
<p>This week the New ConTex shows a neutral to marginally positive sentiment in almost all segments with an overall figure basically maintaining its level (+3 points, which is merely a fifth of a per cent). Situation on the chartering market is again not showing any real changes. Vessels in prompt positions are still more or less unavailable hence fixing activity is focused rather on extensions and on forward positions. Since the Russian/US summit last week did not make any progress in terms of a cease fire in the Ukraine, expectations for a soon lifting of sanctions are low again. Consequently an increase of services to/from the Black Sea will remain wishful thinking for the time being.</p> <p>And with the container orderbook meanwhile reaching some 30% of the existing container fleet it is questionable how long the charter market can remain its balance. Box rates have been much more volatile for a while already.</p>		

New ConTex Development														
Vessel type	Evaluated Period	Today	Week-on-Week			Month-on-Month			Year-on-Year					
		21.08.25	14.08.25	Change	Change	22.07.25	Change	Change	22.08.24	Change	Change			
New ConTex*		1545	1542	3	➡	0,2%	1527	18	➡	1,2%	1312	233	⬆	17,8%
1100 TEU	6 mos	\$17.682	\$17.586	\$96	➡	0,5%	\$17.530	\$152	➡	0,9%	\$14.750	\$2.932	⬆	19,9%
	12 mos	\$16.727	\$16.643	\$84	➡	0,5%	\$16.491	\$236	➡	1,4%	\$13.691	\$3.036	⬆	22,2%
1700 TEU	6 mos	\$30.627	\$30.577	\$50	➡	0,2%	\$30.518	\$109	➡	0,4%	\$23.959	\$6.668	⬆	27,8%
	12 mos	\$26.914	\$26.841	\$73	➡	0,3%	\$26.800	\$114	➡	0,4%	\$20.482	\$6.432	⬆	31,4%
1800 TEU	6 mos	\$34.670	\$34.645	\$25	➡	0,1%	\$34.014	\$656	➡	1,9%	\$29.150	\$5.520	⬆	18,9%
2500 TEU	12 mos	\$34.750	\$34.673	\$77	➡	0,2%	\$35.141	-\$391	⬇	-1,1%	\$29.223	\$5.527	⬆	18,9%
	24 mos	\$26.973	\$26.859	\$114	➡	0,4%	\$26.448	\$525	➡	2,0%	\$24.136	\$2.837	⬆	11,8%
2700 TEU	12 mos	\$36.664	\$36.582	\$82	➡	0,2%	\$36.155	\$509	➡	1,4%	\$32.186	\$4.478	⬆	13,9%
	24 mos	\$28.652	\$28.345	\$307	➡	1,1%	\$27.827	\$825	⬆	3,0%	\$26.514	\$2.138	⬆	8,1%
3500 TEU	12 mos	\$43.440	\$43.400	\$40	➡	0,1%	\$43.105	\$335	➡	0,8%	\$38.395	\$5.045	⬆	13,1%
	24 mos	\$33.903	\$33.760	\$143	➡	0,4%	\$33.160	\$743	⬆	2,2%	\$32.635	\$1.268	⬆	3,9%
4250 TEU	12 mos	\$52.055	\$51.940	\$115	➡	0,2%	\$51.075	\$980	➡	1,9%	\$45.110	\$6.945	⬆	15,4%
	24 mos	\$43.060	\$42.830	\$230	➡	0,5%	\$41.420	\$1.640	⬆	4,0%	\$36.785	\$6.275	⬆	17,1%
5700 TEU	12 mos	\$60.000	\$59.989	\$11	➡	0,0%	\$59.756	\$244	➡	0,4%	\$56.533	\$3.467	⬆	6,1%
6500 TEU	12 mos	\$65.517	\$65.489	\$28	➡	0,0%	\$66.072	-\$555	➡	-0,8%	\$63.400	\$2.117	⬆	3,3%



Disclaimer

The brand NewConTex is copyrighted by Verband Hamburger und Bremer Schiffsmakler e.V. ("VHBS e.V.") and is protected by law. The NewConTex may be published only with the source reference © VHBS e.V. It is distributed to the general public for information purposes only and cannot be relied upon as a trading recommendation and does not constitute a solicitation to trade. The reported information is obtained from market sources. While every effort has been made to ensure the accuracy and the completeness of the NewConTex, VHBS e.V. makes no representations, conditions or warranties of any kind, express or implied, about the completeness, accuracy, reliability, or suitability of the NewConTex. Any reliance you place on the NewConTex is therefore strictly at your own risk. Neither VHBS e.V. nor any of its subsidiaries or affiliates nor any employee of the foregoing shall be liable or have any responsibility for any loss, liability or damage, cost or expense including without limitation, indirect or consequential loss or damage, or any loss or damage whatsoever arising from loss of data or profits arising out of, or in connection with, the use of and the reliance on the NewConTex, save for death or personal injury arising from VHBS e.V. negligence and fraudulent misrepresentation that cannot, under German law, be excluded.