



Verband Hamburger  
und Bremer  
Schiffsmakler e.V.

## New ConTex Container Ship Time Charter Assessment Index

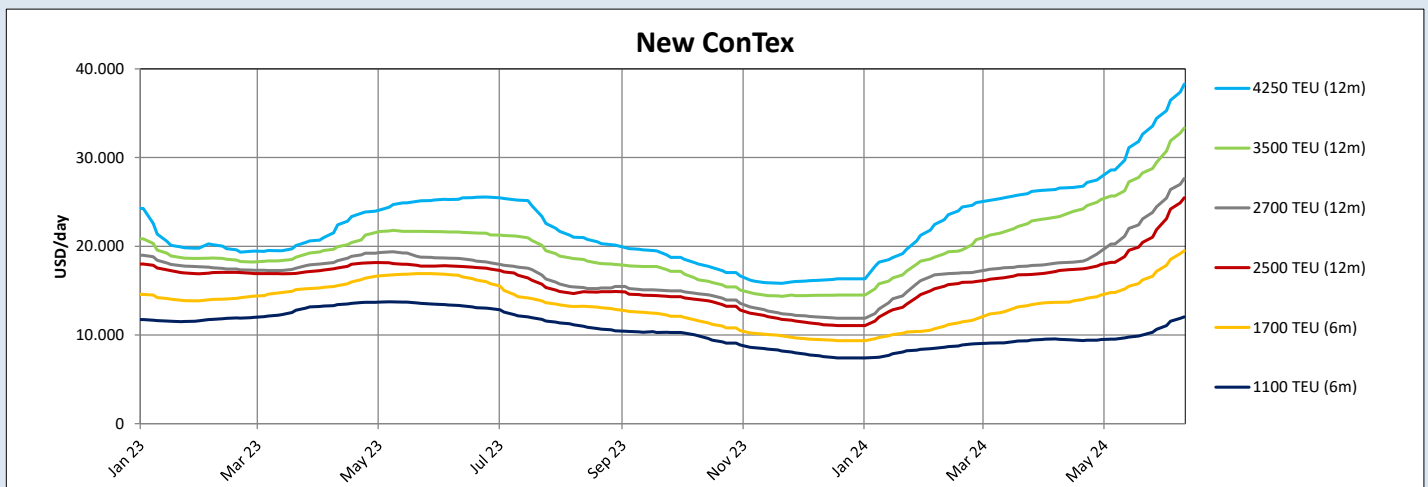
New ConTex*		1113	
13.06.24		6 mos	12 mos
Geared	1100 TEU	\$12.050	n.a.
	1700 TEU	\$19.495	
	2500 TEU	\$25.473	
Gearless	2700 TEU	n.a.	\$27.645
	3500 TEU		\$33.335
	4250 TEU		\$38.275

Legend		
↑	up	+ 2% or more
↗	steady up	from +1% to +1,9%
→	steady	+/- 1%
↘	steady down	from -1% to -1,9%
↓	down	- 2% or less

\*New ConTex evaluation is EXCLUDING 1800 TEU for 6 months period, 1100/1700/5700/6500 TEU groups for 12 months period & 2500/2700/3500/4250 TEU groups for 24 months period

New ConTex-Commentary - issued:		13.06.24
<p>Without any doubt the ongoing rally continues to last. The New ConTex gained overall another 4,9% in Week-on-Week comparison with all reported segments rising. On a Month-on-Month comparison the gain is pretty astonishing, namely 24,9%. This clearly illustrates the speed the container market has developed over the recent weeks. Even some of the 17/1800 TEU vessels now manage to secure 24 months periods, whereby same is basically restricted to modern types (so far). For 2500 TEU and larger such period has more or less already become the norm by now.</p> <p>Achievable periods for 4250 TEU and larger might even move up to minimum 36 months soon unless something unforeseen might occur. For the 1100 TEU vessels it still a different market environment, but is also showing positiv trends. While the whole development reminds one more and more of Covid-19 times, the New ConTex is still far away from same. Right now the New ConTex is at 1113 and overall peak has been around 3500.</p> <p>Worth to mention is also that the spot freight rates for the container transport seem to continue to rise even faster on various trades and reaching levels, which seem to be comparable to Covid-19 times and will probably even rise further for the time being.</p> <p>To whom it might be of interest, please note that the SCFI has gained another 6,1% this week.</p>		

New ConTex Development											
Vessel type	Evaluated Period	Today	Week-on-Week		Month-on-Month		Year-on-Year				
		13.06.24	06.06.24	Change	Change	16.05.24	Change	Change	15.06.23	Change	Change
<b>New ConTex*</b>		<b>1113</b>	1061	52	↑ 4,9%	891	222	↑ 24,9%	834	279	↑ 33,5%
1100 TEU	6 mos	\$12.050	\$11.541	\$509	↑ 4,4%	\$9.757	\$2.293	↑ 23,5%	\$13.279	-\$1.229	↓ -9,3%
	12 mos	\$11.255	\$10.764	\$491	↑ 4,6%	\$9.105	\$2.150	↑ 23,6%	\$12.767	-\$1.512	↓ -11,8%
1700 TEU	6 mos	\$19.495	\$18.523	\$972	↑ 5,2%	\$15.498	\$3.997	↑ 25,8%	\$16.548	\$2.947	↑ 17,8%
	12 mos	\$18.064	\$17.223	\$841	↑ 4,9%	\$14.677	\$3.387	↑ 23,1%	\$15.977	\$2.087	↑ 13,1%
1800 TEU	6 mos	\$24.586	\$22.495	\$2.091	↑ 9,3%	\$17.048	\$7.538	↑ 44,2%	-	-	-
2500 TEU	12 mos	\$25.473	\$24.200	\$1.273	↑ 5,3%	\$19.536	\$5.937	↑ 30,4%	\$17.707	\$7.766	↑ 43,9%
	24 mos	\$21.734	\$20.820	\$914	↑ 4,4%	\$17.102	\$4.632	↑ 27,1%	\$15.945	\$5.789	↑ 36,3%
2700 TEU	12 mos	\$27.645	\$26.386	\$1.259	↑ 4,8%	\$22.016	\$5.629	↑ 25,6%	\$18.577	\$9.068	↑ 48,8%
	24 mos	\$23.236	\$22.495	\$741	↑ 3,3%	\$18.723	\$4.513	↑ 24,1%	\$17.000	\$6.236	↑ 36,7%
3500 TEU	12 mos	\$33.335	\$31.880	\$1.455	↑ 4,6%	\$27.270	\$6.065	↑ 22,2%	\$21.560	\$11.775	↑ 54,6%
	24 mos	\$29.650	\$28.345	\$1.305	↑ 4,6%	\$23.368	\$6.282	↑ 26,9%	\$19.543	\$10.107	↑ 51,7%
4250 TEU	12 mos	\$38.275	\$36.465	\$1.810	↑ 5,0%	\$31.115	\$7.160	↑ 23,0%	\$25.465	\$12.810	↑ 50,3%
	24 mos	\$32.500	\$31.800	\$700	↑ 2,2%	\$27.400	\$5.100	↑ 18,6%	\$23.530	\$8.970	↑ 38,1%
5700 TEU	12 mos	\$47.606	\$45.428	\$2.178	↑ 4,8%	\$37.700	\$9.906	↑ 26,3%	\$32.881	\$14.725	↑ 44,8%
6500 TEU	12 mos	\$54.756	\$52.139	\$2.617	↑ 5,0%	\$44.422	\$10.334	↑ 23,3%	\$36.425	\$18.331	↑ 50,3%



Disclaimer

The brand NewConTex is copyrighted by Verband Hamburger und Bremer Schiffsmakler e.V. ("VHBS e.V.") and is protected by law. The NewConTex may be published only with the source reference © VHBS e.V. It is distributed to the general public for information purposes only and cannot be relied upon as a trading recommendation and does not constitute a solicitation to trade. The reported information is obtained from market sources. While every effort has been made to ensure the accuracy and the completeness of the NewConTex, VHBS e.V. makes no representations, conditions or warranties of any kind, express or implied, about the completeness, accuracy, reliability, or suitability of the NewConTex. Any reliance you place on the NewConTex is therefore strictly at your own risk. Neither VHBS e.V. nor any of its subsidiaries or affiliates nor any employee of the foregoing shall be liable or have any responsibility for any loss, liability or damage, cost or expense including without limitation, indirect or consequential loss or damage, or any loss or damage whatsoever arising from loss of data or profits arising out of, or in connection with, the use of and the reliance on the NewConTex, save for death or personal injury arising from VHBS e.V. negligence and fraudulent misrepresentation that cannot, under German law, be excluded.