

New ConTex Container Ship Time Charter Assessment Index

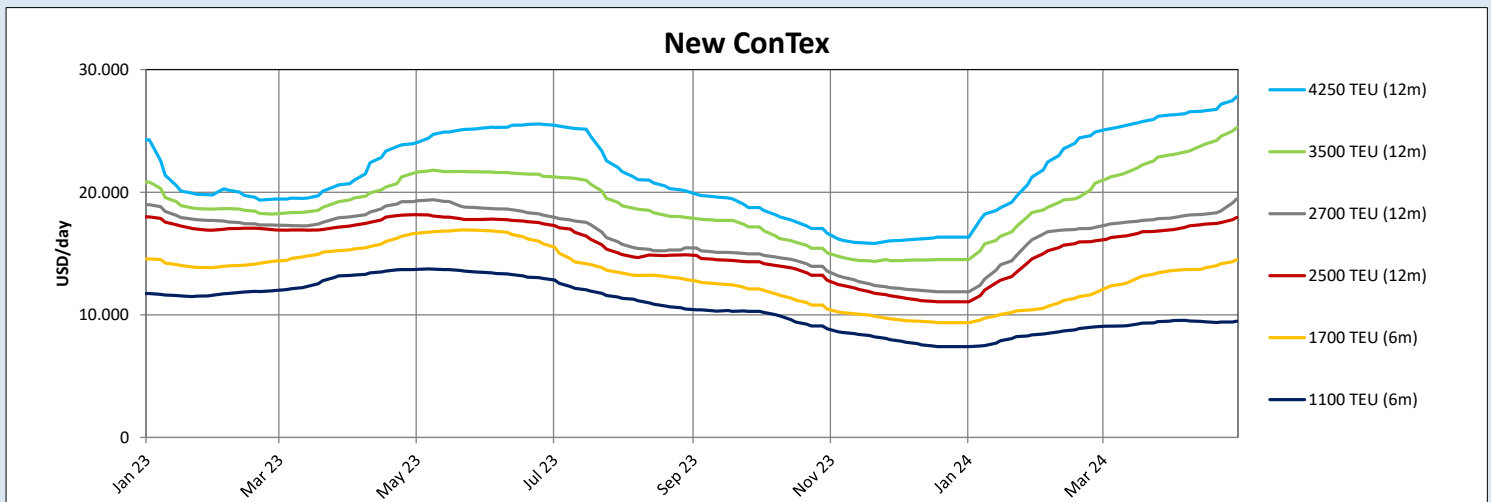
New ConTex*		818	
02.05.24		6 mos	12 mos
Geared	1100 TEU	\$9.475	n.a.
	1700 TEU	\$14.498	
	2500 TEU		\$17.959
Gearless	2700 TEU	n.a.	\$19.452
	3500 TEU		\$25.265
	4250 TEU		\$27.810

Legend		
↑	up	+ 2% or more
↗	steady up	from +1% to +1,9%
→	steady	+/- 1%
↘	steady down	from -1% to -1,9%
↓	down	- 2% or less

*New ConTex evaluation is EXCLUDING 1800 TEU for 6 months period, 1100/1700/5700/6500 TEU groups for 12 months period & 2500/2700/3500/4250 TEU groups for 24 months period

New ConTex-Commentary - issued:	02.05.24
<p>Further positive movement in the New ConTex...so far so good...and even better there seems to be strong demand pushing rates up in particular in the larger sizes. Even the feeder market, which was suffering from a bit sluggishness over the past few weeks is seeing a revival. Activity is another keyword that summarizes the current market, positionlists are getting shorter, a trend which will most probably continue, as vibrant about chartering opportunities between Owners and Charterers will probalby result in even few positions over next week. Looking at the various segments of the New ConTex index it seems that the activity and demand that we are seeing does not 100% mirror the developments in the rates of the individual classes, with the strongest performer this week being the 2700 TEU segment. Next week will definitely show some very interesting positive developments in the New ConTex...one does not have to be clairvoyant to make that prediction. This leaves us with wishing everybody celebrating Orthodox Easter a Happy and peaceful Easter...and to all of those that will watch the derby between HSV and St. Pauli tonight, well, you knew what you were getting into....</p>	

New ConTex Development												
Vessel type	Evaluated Period	Today	Week-on-Week		Month-on-Month			Year-on-Year				
		02.05.24	25.04.24	Change	Change	04.04.24	Change	Change	04.05.23	Change	Change	
New ConTex*		818	797	21	↑ 2,6%	771	47	↑ 6,1%	841	-23	↓ -2,7%	
1100 TEU	6 mos	\$9.475	\$9.409	\$66	↔ 0,7%	\$9.532	-\$57	↔ -0,6%	\$13.715	-\$4.240	↓ -30,9%	
	12 mos	\$8.736	\$8.695	\$41	↔ 0,5%	\$8.873	-\$137	↘ -1,5%	\$13.121	-\$4.385	↓ -33,4%	
1700 TEU	6 mos	\$14.498	\$14.161	\$337	↑ 2,4%	\$13.625	\$873	↑ 6,4%	\$16.660	-\$2.162	↓ -13,0%	
	12 mos	\$13.736	\$13.459	\$277	↑ 2,1%	\$12.689	\$1.047	↑ 8,3%	\$16.029	-\$2.293	↓ -14,3%	
1800 TEU	6 mos	\$16.293	\$16.077	\$216	↗ 1,3%	\$15.577	\$716	↑ 4,6%	-	-	-	
2500 TEU	12 mos	\$17.959	\$17.527	\$432	↑ 2,5%	\$16.955	\$1.004	↑ 5,9%	\$18.159	-\$200	↘ -1,1%	
	24 mos	\$15.625	\$15.282	\$343	↑ 2,2%	\$14.680	\$945	↑ 6,4%	\$16.573	-\$948	↓ -5,7%	
2700 TEU	12 mos	\$19.452	\$18.482	\$970	↑ 5,2%	\$17.925	\$1.527	↑ 8,5%	\$19.298	\$154	↔ 0,8%	
	24 mos	\$17.000	\$16.118	\$882	↑ 5,5%	\$15.550	\$1.450	↑ 9,3%	\$17.555	-\$555	↓ -3,2%	
3500 TEU	12 mos	\$25.265	\$24.580	\$685	↑ 2,8%	\$23.090	\$2.175	↑ 9,4%	\$21.650	\$3.615	↑ 16,7%	
	24 mos	\$21.045	\$20.303	\$742	↑ 3,7%	\$19.603	\$1.442	↑ 7,4%	\$19.855	\$1.190	↑ 6,0%	
4250 TEU	12 mos	\$27.810	\$27.185	\$625	↑ 2,3%	\$26.320	\$1.490	↑ 5,7%	\$24.063	\$3.747	↑ 15,6%	
	24 mos	\$23.933	\$22.878	\$1.055	↑ 4,6%	\$22.448	\$1.485	↑ 6,6%	\$22.248	\$1.685	↑ 7,6%	
5700 TEU	12 mos	\$35.767	\$35.067	\$700	↗ 2,0%	\$34.394	\$1.373	↑ 4,0%	\$30.689	\$5.078	↑ 16,5%	
6500 TEU	12 mos	\$43.067	\$42.122	\$945	↑ 2,2%	\$41.200	\$1.867	↑ 4,5%	\$35.839	\$7.228	↑ 20,2%	



Disclaimer
The brand NewConTex is copyrighted by Verband Hamburger und Bremer Schiffsmakler e.V. ("VHBS e.V.") and is protected by law. The NewConTex may be published only with the source reference © VHBS e.V. It is distributed to the general public for information purposes only and cannot be relied upon as a trading recommendation and does not constitute a solicitation to trade. The reported information is obtained from market sources. While every effort has been made to ensure the accuracy and the completeness of the NewConTex, VHBS e.V. makes no representations, conditions or warranties of any kind, express or implied, about the completeness, accuracy, reliability, or suitability of the NewConTex. Any reliance you place on the NewConTex is therefore strictly at your own risk. Neither VHBS e.V. nor any of its subsidiaries or affiliates nor any employee of the foregoing shall be liable or have any responsibility for any loss, liability or damage, cost or expense including without limitation, indirect or consequential loss or damage, or any loss or damage whatsoever arising from loss of data or profits arising out of, or in connection with, the use of and the reliance on the NewConTex, save for death or personal injury arising from VHBS e.V. negligence and fraudulent misrepresentation that cannot, under German law, be excluded.