



Verband Hamburger
und Bremer
Schiffsmakler e.V.

New ConTex Container Ship Time Charter Assessment Index

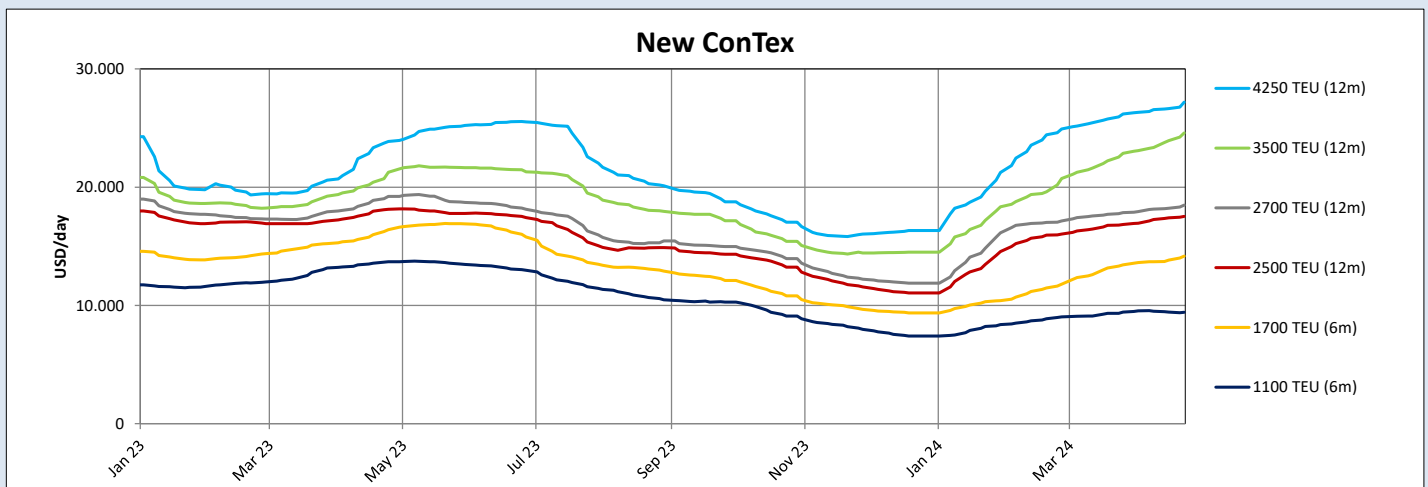
| New ConTex* | | 797 | |
|-------------|----------|----------|----------|
| 25.04.24 | | 6 mos | 12 mos |
| Geared | 1100 TEU | \$9.409 | n.a. |
| | 1700 TEU | \$14.161 | |
| | 2500 TEU | \$17.527 | |
| Gearless | 2700 TEU | n.a. | \$18.482 |
| | 3500 TEU | | \$24.580 |
| | 4250 TEU | | \$27.185 |

| Legend | | |
|--------|-------------|-------------------|
| ↑ | up | + 2% or more |
| ↗ | steady up | from +1% to +1,9% |
| → | steady | +/- 1% |
| ↘ | steady down | from -1% to -1,9% |
| ↓ | down | - 2% or less |

*New ConTex evaluation is EXCLUDING 1800 TEU for 6 months period, 1100/1700/5700/6500 TEU groups for 12 months period & 2500/2700/3500/4250 TEU groups for 24 months period

| New ConTex-Commentary - issued: | | 25.04.24 |
|---|--|----------|
| <p>The container chartering markets remain active and the majority of size segments is registering a solid demand from the operators. The overall availability of tonnage remains on manageable levels, except for the small feeder within the size of CV1100 and smaller. Although they lately benefit from increasing interest in Asia. Having said this, Owners active in the size segments larger CV1100 have a little easier smile on their face and benefiting from this constant demand and are able to obtain premium above last done. As mentioned, the individual segments are affected differently and thus is the New ConTex registering a light increase of 1,7% week on week only. The most benefiting segments are the gearless 3500 TEU, increasing by 2,7% basis 12 months period, closely followed by the 1700 TEU's which are in the greens by 2,4 per cent week on week. The classic 4250 TEU baby panamax closing the week at USD 27.185 per day basis a period of 12 months, which is an increase of 2,0 per cent week on week.</p> | | |

| New ConTex Development | | | | | | | | | | | |
|------------------------|------------------|------------|--------------|--------|----------------|----------|--------------|----------|----------|----------|----------|
| Vessel type | Evaluated Period | Today | Week-on-Week | | Month-on-Month | | Year-on-Year | | | | |
| | | 25.04.24 | 18.04.24 | Change | Change | 28.03.24 | Change | 27.04.23 | Change | Change | |
| New ConTex* | | 797 | 784 | 13 | 1,7% | 764 | 33 | ↑ 4,3% | 834 | -37 | ↓ -4,4% |
| 1100 TEU | 6 mos | \$9.409 | \$9.430 | -\$21 | ↔ -0,2% | \$9.441 | -\$32 | ↔ -0,3% | \$13.685 | -\$4.276 | ↓ -31,2% |
| | 12 mos | \$8.695 | \$8.730 | -\$35 | ↔ -0,4% | \$8.761 | -\$66 | ↔ -0,8% | \$13.075 | -\$4.380 | ↓ -33,5% |
| 1700 TEU | 6 mos | \$14.161 | \$13.834 | \$327 | ↑ 2,4% | \$13.432 | \$729 | ↑ 5,4% | \$16.398 | -\$2.237 | ↓ -13,6% |
| | 12 mos | \$13.459 | \$13.009 | \$450 | ↑ 3,5% | \$12.418 | \$1.041 | ↑ 8,4% | \$15.713 | -\$2.254 | ↓ -14,3% |
| 1800 TEU | 6 mos | \$16.077 | \$15.841 | \$236 | ↗ 1,5% | \$15.373 | \$704 | ↑ 4,6% | - | - | - |
| 2500 TEU | 12 mos | \$17.527 | \$17.398 | \$129 | ↗ 0,7% | \$16.834 | \$693 | ↑ 4,1% | \$18.120 | -\$593 | ↓ -3,3% |
| | 24 mos | \$15.282 | \$15.114 | \$168 | ↗ 1,1% | \$14.584 | \$698 | ↑ 4,8% | \$16.491 | -\$1.209 | ↓ -7,3% |
| 2700 TEU | 12 mos | \$18.482 | \$18.218 | \$264 | ↗ 1,4% | \$17.845 | \$637 | ↑ 3,6% | \$19.223 | -\$741 | ↓ -3,9% |
| | 24 mos | \$16.118 | \$15.959 | \$159 | ↗ 1,0% | \$15.436 | \$682 | ↑ 4,4% | \$17.427 | -\$1.309 | ↓ -7,5% |
| 3500 TEU | 12 mos | \$24.580 | \$23.940 | \$640 | ↑ 2,7% | \$22.860 | \$1.720 | ↑ 7,5% | \$21.255 | \$3.325 | ↑ 15,6% |
| | 24 mos | \$20.303 | \$20.000 | \$303 | ↗ 1,5% | \$19.400 | \$895 | ↑ 4,6% | \$19.390 | \$913 | ↑ 4,7% |
| 4250 TEU | 12 mos | \$27.185 | \$26.643 | \$542 | ↑ 2,0% | \$26.190 | \$995 | ↑ 3,8% | \$23.868 | \$3.317 | ↑ 13,9% |
| | 24 mos | \$22.878 | \$22.900 | -\$22 | ↔ -0,1% | \$22.198 | \$680 | ↑ 3,1% | \$21.963 | \$915 | ↑ 4,2% |
| 5700 TEU | 12 mos | \$35.067 | \$34.450 | \$617 | ↗ 1,8% | \$34.250 | \$817 | ↑ 2,4% | \$30.400 | \$4.667 | ↑ 15,4% |
| 6500 TEU | 12 mos | \$42.122 | \$41.433 | \$689 | ↗ 1,7% | \$40.989 | \$1.133 | ↑ 2,8% | \$35.544 | \$6.578 | ↑ 18,5% |



Disclaimer
The brand NewConTex is copyrighted by Verband Hamburger und Bremer Schiffsmakler e.V. ("VHBS e.V.") and is protected by law. The NewConTex may be published only with the source reference © VHBS e.V. It is distributed to the general public for information purposes only and cannot be relied upon as a trading recommendation and does not constitute a solicitation to trade. The reported information is obtained from market sources. While every effort has been made to ensure the accuracy and the completeness of the NewConTex, VHBS e.V. makes no representations, conditions or warranties of any kind, express or implied, about the completeness, accuracy, reliability, or suitability of the NewConTex. Any reliance you place on the NewConTex is therefore strictly at your own risk. Neither VHBS e.V. nor any of its subsidiaries or affiliates nor any employee of the foregoing shall be liable or have any responsibility for any loss, liability or damage, cost or expense including without limitation, indirect or consequential loss or damage, or any loss or damage whatsoever arising from loss of data or profits arising out of, or in connection with, the use of and the reliance on the NewConTex, save for death or personal injury arising from VHBS e.V. negligence and fraudulent misrepresentation that cannot, under German law, be excluded.