



Verband Hamburger
und Bremer
Schiffsmakler e.V.

New ConTex Container Ship Time Charter Assessment Index

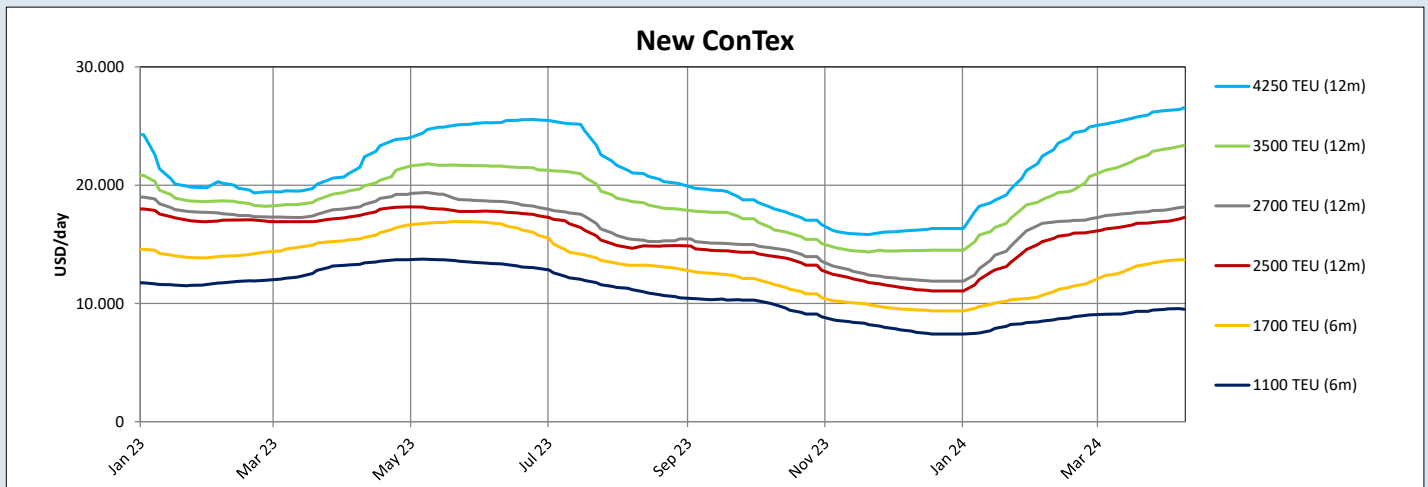
New ConTex*		778	
11.04.24		6 mos	12 mos
Geared	1100 TEU	\$9.498	n.a.
	1700 TEU	\$13.685	
	2500 TEU	\$17.259	
Gearless	2700 TEU	n.a.	\$18.148
	3500 TEU		\$23.358
	4250 TEU		\$26.555

Legend		
↑	up	+ 2% or more
↗	steady up	from +1% to +1,9%
→	steady	+/- 1%
↘	steady down	from -1% to -1,9%
↓	down	- 2% or less

*New ConTex evaluation is EXCLUDING 1800 TEU for 6 months period, 1100/1700/5700/6500 TEU groups for 12 months period & 2500/2700/3500/4250 TEU groups for 24 months period

New ConTex-Commentary - issued:		11.04.24
<p>The container market continued to be active although reduced slightly week on week. There is still plenty of demand across all regions, with some segments sold out on prompt tonnage. Overall the rates are stable this week with minimal to no change from previous week. This can also be explained with some tonnage providers more focused on increasing the length of the charter period, whilst keeping last done levels or a tick above. Activity in terms of fixtures actually slowed this week, but more to do with circumstances than any drop in demand. The index reflects the stabilized rates this week, 0,9% to 778 and we expect this small and steady increase to continue short term perhaps until the summer season. The index is however a solid 5,7% up since last month, underlining the positive trend the market has been experiencing so far this year. The 'largest' week-to-week change were seen in the 2500TEU and 2700TEU for 24 months, both up 2,0%. One noticeable development is the month-to-month for 1700TEU, up 8,7% on the 6 month rate, and 13% for the 12 month rate. Looking at the Year-on-Year development, it is remarkable that the smallest feeders are down between 12-32%, whilst the largest segments are up roughly 10-20%. Overall there are positive tendencies in the market with belief that at least April and May will have similar development.</p>		

New ConTex Development											
Vessel type	Evaluated Period	Today	Week-on-Week		Month-on-Month		Year-on-Year				
		11.04.24	04.04.24	Change	Change	14.03.24	Change	13.04.23	Change	Change	
New ConTex*		778	771	7	0,9%	736	42	↑ 5,7%	797	-19	↓ -2,4%
1100 TEU	6 mos	\$9.498	\$9.532	-\$34	↔ -0,4%	\$9.107	\$391	↑ 4,3%	\$13.421	-\$3.923	↓ -29,2%
	12 mos	\$8.793	\$8.873	-\$80	↔ -0,9%	\$8.434	\$359	↑ 4,3%	\$12.883	-\$4.090	↓ -31,7%
1700 TEU	6 mos	\$13.685	\$13.625	\$60	↔ 0,4%	\$12.593	\$1.092	↑ 8,7%	\$15.569	-\$1.884	↓ -12,1%
	12 mos	\$12.836	\$12.689	\$147	↗ 1,2%	\$11.359	\$1.477	↑ 13,0%	\$15.127	-\$2.291	↓ -15,1%
1800 TEU	6 mos	\$15.773	\$15.577	\$196	↗ 1,3%	\$14.745	\$1.028	↑ 7,0%	-	-	-
2500 TEU	12 mos	\$17.259	\$16.955	\$304	↑ 1,8%	\$16.448	\$811	↑ 4,9%	\$17.543	-\$284	↓ -1,6%
	24 mos	\$14.980	\$14.680	\$300	↑ 2,0%	\$14.234	\$746	↑ 5,2%	\$15.902	-\$922	↓ -5,8%
2700 TEU	12 mos	\$18.148	\$17.925	\$223	↗ 1,2%	\$17.566	\$582	↑ 3,3%	\$18.380	-\$232	↘ -1,3%
	24 mos	\$15.866	\$15.550	\$316	↑ 2,0%	\$15.230	\$636	↑ 4,2%	\$16.784	-\$918	↓ -5,5%
3500 TEU	12 mos	\$23.358	\$23.090	\$268	↗ 1,2%	\$21.610	\$1.748	↑ 8,1%	\$19.945	\$3.413	↑ 17,1%
	24 mos	\$19.813	\$19.603	\$210	↗ 1,1%	\$18.415	\$1.398	↑ 7,6%	\$18.155	\$1.658	↑ 9,1%
4250 TEU	12 mos	\$26.555	\$26.320	\$235	↔ 0,9%	\$25.455	\$1.100	↑ 4,3%	\$22.405	\$4.150	↑ 18,5%
	24 mos	\$22.773	\$22.448	\$325	↗ 1,4%	\$21.535	\$1.238	↑ 5,7%	\$20.235	\$2.538	↑ 12,5%
5700 TEU	12 mos	\$34.411	\$34.394	\$17	↔ 0,0%	\$33.639	\$772	↑ 2,3%	\$28.694	\$5.717	↑ 19,9%
6500 TEU	12 mos	\$41.283	\$41.200	\$83	↔ 0,2%	\$40.550	\$733	↗ 1,8%	\$33.650	\$7.633	↑ 22,7%



Disclaimer
The brand NewConTex is copyrighted by Verband Hamburger und Bremer Schiffsmakler e.V. ("VHBS e.V.") and is protected by law. The NewConTex may be published only with the source reference © VHBS e.V. It is distributed to the general public for information purposes only and cannot be relied upon as a trading recommendation and does not constitute a solicitation to trade. The reported information is obtained from market sources. While every effort has been made to ensure the accuracy and the completeness of the NewConTex, VHBS e.V. makes no representations, conditions or warranties of any kind, express or implied, about the completeness, accuracy, reliability, or suitability of the NewConTex. Any reliance you place on the NewConTex is therefore strictly at your own risk. Neither VHBS e.V. nor any of its subsidiaries or affiliates nor any employee of the foregoing shall be liable or have any responsibility for any loss, liability or damage, cost or expense including without limitation, indirect or consequential loss or damage, or any loss or damage whatsoever arising from loss of data or profits arising out of, or in connection with, the use of and the reliance on the NewConTex, save for death or personal injury arising from VHBS e.V. negligence and fraudulent misrepresentation that cannot, under German law, be excluded.