

New ConTex Container Ship Time Charter Assessment Index

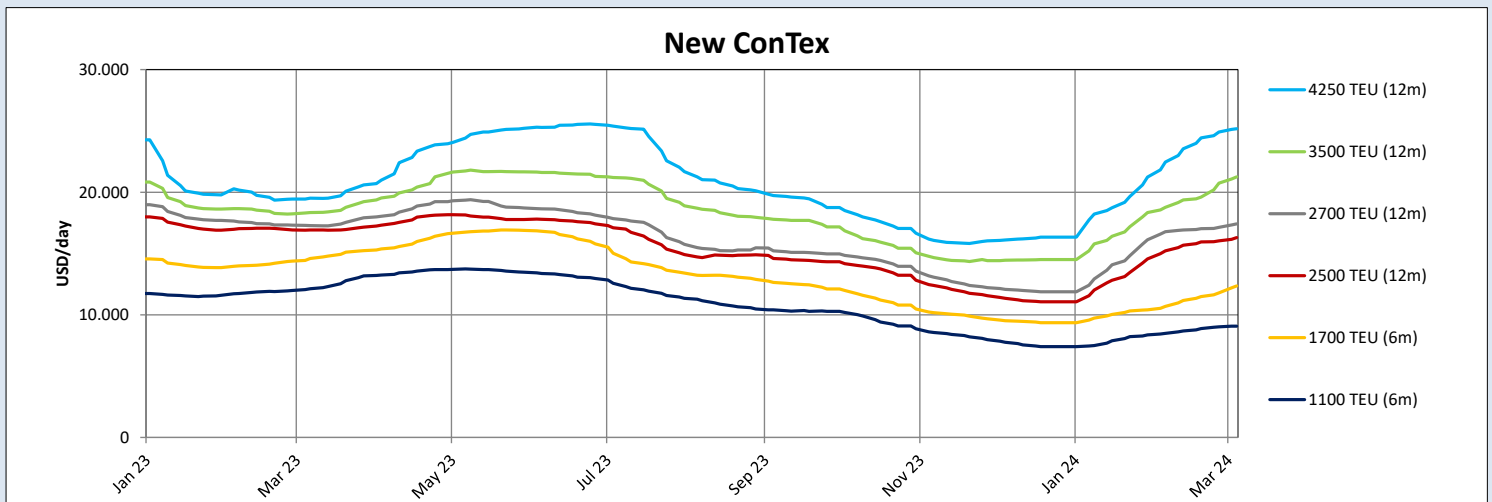
New ConTex*		728	
07.03.24		6 mos	12 mos
Geared	1100 TEU	\$9.077	n.a.
	1700 TEU	\$12.357	
	2500 TEU		\$16.291
Gearless	2700 TEU	n.a.	\$17.416
	3500 TEU		\$21.253
	4250 TEU		\$25.168

Legend		
↑	up	+ 2% or more
↗	steady up	from +1% to +1,9%
→	steady	+/- 1%
↘	steady down	from -1% to -1,9%
↓	down	- 2% or less

*New ConTex evaluation is EXCLUDING 1800 TEU for 6 months period, 1100/1700/5700/6500 TEU groups for 12 months period & 2500/2700/3500/4250 TEU groups for 24 months period

New ConTex-Commentary - issued:	07.03.24
<p>The New ConTex increased another 14 points to 728 and it is now almost at the same level as it was in March 2023.</p> <p>Demand for tonnage, including for vintage units is showing no sign of easing, which remains astonishing considering the continued influx of energy-efficient new building vessels. As supply remains low above 5,500 teu, especially for quality units, charter rates continue to rise fast in these sizes.</p> <p>Considering the ongoing shortage of prompt ships across the board and continued disruptions in the Red Sea, the short-term market outlook remains bright for Owners. The threat that newbuilding tonnage would destabilize the market has for now gone away, with the Red Sea problem greatly helping to absorb the new capacities. However, the current euphoria could change significantly once ships are again able to trade through the Suez Canal, with overcapacity expected to make its comeback.</p> <p>The latest developments on the freight rates side, with the SCFI down by 6% last Friday, and for the third week in row are meanwhile a cause of concern, highlighting a rising imbalance between cargo volumes and capacities deployed.</p>	

New ConTex Development											
Vessel type	Evaluated Period	Today	Week-on-Week		Month-on-Month			Year-on-Year			
		07.03.24	29.02.24	Change	Change	08.02.24	Change	Change	09.03.23	Change	Change
New ConTex*		728	714	14 ↗	2,0%	663	65	↑ 9,8%	736	-8 ↘	-1,1%
1100 TEU	6 mos	\$9.077	\$9.023	\$54 ↗	0,6%	\$8.496	\$581	↑ 6,8%	\$12.125	-\$3.048 ↘	-25,1%
	12 mos	\$8.391	\$8.323	\$68 ↗	0,8%	\$7.815	\$576	↑ 7,4%	\$11.204	-\$2.813 ↘	-25,1%
1700 TEU	6 mos	\$12.357	\$11.793	\$564 ↑	4,8%	\$10.696	\$1.661	↑ 15,5%	\$14.598	-\$2.241 ↘	-15,4%
	12 mos	\$11.182	\$10.743	\$439 ↑	4,1%	\$9.931	\$1.251	↑ 12,6%	\$13.954	-\$2.772 ↘	-19,9%
1800 TEU	6 mos	\$14.352	\$14.161	\$191 ↗	1,3%	\$12.800	\$1.552	↑ 12,1%	-	-	-
2500 TEU	12 mos	\$16.291	\$16.036	\$255 ↗	1,6%	\$15.216	\$1.075	↑ 7,1%	\$16.918	-\$627 ↘	-3,7%
	24 mos	\$13.934	\$13.532	\$402 ↑	3,0%	\$12.691	\$1.243	↑ 9,8%	\$14.711	-\$777 ↘	-5,3%
2700 TEU	12 mos	\$17.416	\$17.136	\$280 ↗	1,6%	\$16.775	\$641	↑ 3,8%	\$17.282	\$134 ↗	0,8%
	24 mos	\$15.025	\$14.661	\$364 ↑	2,5%	\$14.318	\$707	↑ 4,9%	\$15.359	-\$334 ↘	-2,2%
3500 TEU	12 mos	\$21.253	\$20.738	\$515 ↑	2,5%	\$18.770	\$2.483	↑ 13,2%	\$18.350	\$2.903 ↑	15,8%
	24 mos	\$18.018	\$17.635	\$383 ↑	2,2%	\$16.360	\$1.658	↑ 10,1%	\$16.323	\$1.695 ↑	10,4%
4250 TEU	12 mos	\$25.168	\$24.910	\$258 ↗	1,0%	\$22.455	\$2.713	↑ 12,1%	\$19.518	\$5.650 ↑	28,9%
	24 mos	\$21.205	\$20.820	\$385 ↗	1,8%	\$19.045	\$2.160	↑ 11,3%	\$17.278	\$3.927 ↑	22,7%
5700 TEU	12 mos	\$33.178	\$32.422	\$756 ↑	2,3%	\$27.761	\$5.417	↑ 19,5%	\$26.453	\$6.725 ↑	25,4%
6500 TEU	12 mos	\$39.950	\$38.856	\$1.094 ↑	2,8%	\$33.067	\$6.883	↑ 20,8%	\$30.728	\$9.222 ↑	30,0%



Disclaimer

The brand NewConTex is copyrighted by Verband Hamburger und Bremer Schiffsmakler e.V. ("VHBS e.V.") and is protected by law. The NewConTex may be published only with the source reference © VHBS e.V. It is distributed to the general public for information purposes only and cannot be relied upon as a trading recommendation and does not constitute a solicitation to trade. The reported information is obtained from market sources. While every effort has been made to ensure the accuracy and the completeness of the NewConTex, VHBS e.V. makes no representations, conditions or warranties of any kind, express or implied, about the completeness, accuracy, reliability, or suitability of the NewConTex. Any reliance you place on the NewConTex is therefore strictly at your own risk. Neither VHBS e.V. nor any of its subsidiaries or affiliates nor any employee of the foregoing shall be liable or have any responsibility for any loss, liability or damage, cost or expense including without limitation, indirect or consequential loss or damage, or any loss or damage whatsoever arising from loss of data or profits arising out of, or in connection with, the use of and the reliance on the NewConTex, save for death or personal injury arising from VHBS e.V. negligence and fraudulent misrepresentation that cannot, under German law, be excluded.