



Verband Hamburger  
und Bremer  
Schiffsmakler e.V.

## New ConTex Container Ship Time Charter Assessment Index

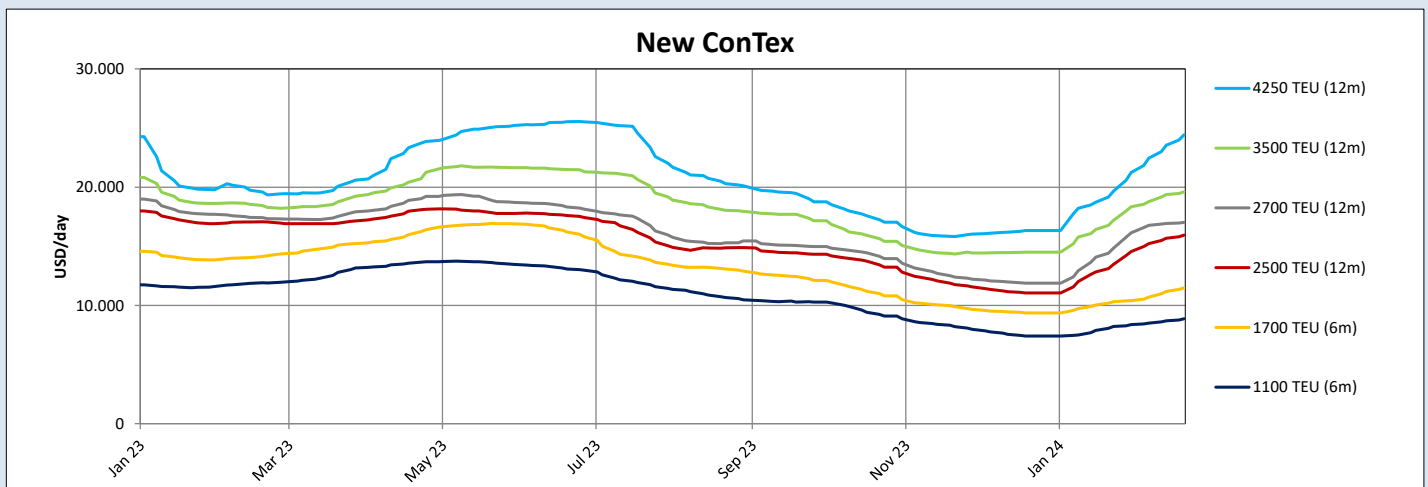
New ConTex*		697	
22.02.24		6 mos	12 mos
Geared	1100 TEU	\$8.873	n.a.
	1700 TEU	\$11.482	
	2500 TEU	\$15.939	
Gearless	2700 TEU	n.a.	\$17.020
	3500 TEU		\$19.600
	4250 TEU		\$24.425

Legend		
↑	up	+ 2% or more
↗	steady up	from +1% to +1,9%
→	steady	+/- 1%
↘	steady down	from -1% to -1,9%
↓	down	- 2% or less

\*New ConTex evaluation is EXCLUDING 1800 TEU for 6 months period, 1100/1700/5700/6500 TEU groups for 12 months period & 2500/2700/3500/4250 TEU groups for 24 months period

New ConTex-Commentary - issued:	22.02.24
<p>Despite several Asian based people extending the CNY holidays by another week, we did see a bit of activity, resulting in a small upwards tick in New ConTex by 1,9%. News about the consequences of the atrocious attacks of the Houthis on merchant vessels in the Red Sea dominated the Container News yet again, with the head of a major liner operator reporting on the effects that these have on the Container Liner networks worldwide. Given the otherwise largely underwhelming economic news it is thus not very outrageous to assume that the current upward trend is fueled by these developments...this has been said many times before...just not by me yet. Main sector of activity was the 16-1800 TEU Feeder sector, as can be seen from the below figures. It is very interesting to note, that we finally also saw some activity in the Asian Feeder segment with one Charterer covering his demand for a new regional service. This is a most welcome change to an area that had been lagging behind in the previous weeks. Let us hope that this sparks a bit further excitement. Lagging behind this week are definitely the size ranges around 2500-3500 TEU, with especially the 2700 TEU segment showing a sideways movement. With a hopefully full desks all around next week, with people having returned from their CNY festivities. Let us hope for a great week coming up..... keeping in mind that Easter is already rearing its chocolatey head!</p>	

New ConTex Development											
Vessel type	Evaluated Period	Today	Week-on-Week		Month-on-Month		Year-on-Year				
		22.02.24	15.02.24	Change	Change	25.01.24	Change	Change	23.02.23	Change	Change
<b>New ConTex*</b>		697	684	13	↗ 1,9%	605	92	↑ 15,2%	730	-33	↓ -4,5%
1100 TEU	6 mos	\$8.873	\$8.689	\$184	↑ 2,1%	\$8.220	\$653	↑ 7,9%	\$11.898	-\$3.025	↓ -25,4%
	12 mos	\$8.184	\$7.968	\$216	↑ 2,7%	\$7.584	\$600	↑ 7,9%	\$11.071	-\$2.887	↓ -26,1%
1700 TEU	6 mos	\$11.482	\$11.177	\$305	↑ 2,7%	\$10.316	\$1.166	↑ 11,3%	\$14.208	-\$2.726	↓ -19,2%
	12 mos	\$10.534	\$10.239	\$295	↑ 2,9%	\$9.614	\$920	↑ 9,6%	\$13.469	-\$2.935	↓ -21,8%
1800 TEU	6 mos	\$13.684	\$13.027	\$657	↑ 5,0%	\$11.866	\$1.818	↑ 15,3%	-	-	-
	12 mos	\$15.939	\$15.684	\$255	↑ 1,6%	\$13.466	\$2.473	↑ 18,4%	\$17.045	-\$1.106	↓ -6,5%
2500 TEU	24 mos	\$13.509	\$13.234	\$275	↑ 2,1%	\$11.509	\$2.000	↑ 17,4%	\$14.661	-\$1.152	↓ -7,9%
	12 mos	\$17.020	\$16.923	\$97	→ 0,6%	\$14.827	\$2.193	↑ 14,8%	\$17.336	-\$316	↘ -1,8%
2700 TEU	24 mos	\$14.698	\$14.566	\$132	↗ 0,9%	\$12.777	\$1.921	↑ 15,0%	\$15.345	-\$647	↓ -4,2%
	12 mos	\$19.600	\$19.375	\$225	↗ 1,2%	\$17.195	\$2.405	↑ 14,0%	\$18.278	\$1.322	↑ 7,2%
3500 TEU	24 mos	\$17.155	\$16.835	\$320	↗ 1,9%	\$14.988	\$2.167	↑ 14,5%	\$16.328	\$827	↑ 5,1%
	12 mos	\$24.425	\$23.550	\$875	↑ 3,7%	\$19.660	\$4.765	↑ 24,2%	\$19.345	\$5.080	↑ 26,3%
4250 TEU	24 mos	\$20.533	\$20.033	\$500	↑ 2,5%	\$17.110	\$3.423	↑ 20,0%	\$17.390	\$3.143	↑ 18,1%
	12 mos	\$30.911	\$28.833	\$2.078	↑ 7,2%	\$24.706	\$6.205	↑ 25,1%	\$26.356	\$4.555	↑ 17,3%
6500 TEU	12 mos	\$36.556	\$34.806	\$1.750	↑ 5,0%	\$27.017	\$9.539	↑ 35,3%	\$30.750	\$5.806	↑ 18,9%



Disclaimer  
The brand NewConTex is copyrighted by Verband Hamburger und Bremer Schiffsmakler e.V. ("VHBS e.V.") and is protected by law. The NewConTex may be published only with the source reference © VHBS e.V. It is distributed to the general public for information purposes only and cannot be relied upon as a trading recommendation and does not constitute a solicitation to trade. The reported information is obtained from market sources. While every effort has been made to ensure the accuracy and the completeness of the NewConTex, VHBS e.V. makes no representations, conditions or warranties of any kind, express or implied, about the completeness, accuracy, reliability, or suitability of the NewConTex. Any reliance you place on the NewConTex is therefore strictly at your own risk. Neither VHBS e.V. nor any of its subsidiaries or affiliates nor any employee of the foregoing shall be liable or have any responsibility for any loss, liability or damage, cost or expense including without limitation, indirect or consequential loss or damage, or any loss or damage whatsoever arising from loss of data or profits arising out of, or in connection with, the use of and the reliance on the NewConTex, save for death or personal injury arising from VHBS e.V. negligence and fraudulent misrepresentation that cannot, under German law, be excluded.