



Verband Hamburger
und Bremer
Schiffsmakler e.V.

New ConTex Container Ship Time Charter Assessment Index

New ConTex*		684	
15.02.24		6 mos	12 mos
Geared	1100 TEU	\$8.689	n.a.
	1700 TEU	\$11.177	
	2500 TEU	\$15.684	
Gearless	2700 TEU	n.a.	\$16.923
	3500 TEU		\$19.375
	4250 TEU		\$23.550

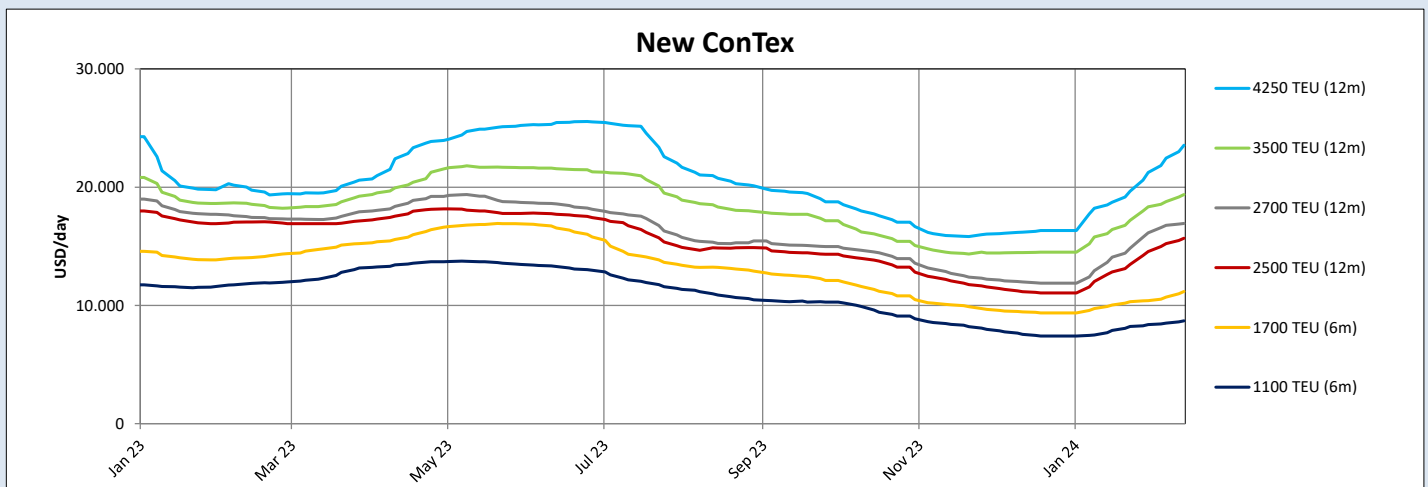
Legend		
↑	up	+ 2% or more
↗	steady up	from +1% to +1,9%
→	steady	+/- 1%
↘	steady down	from -1% to -1,9%
↓	down	- 2% or less

*New ConTex evaluation is EXCLUDING 1800 TEU for 6 months period, 1100/1700/5700/6500 TEU groups for 12 months period & 2500/2700/3500/4250 TEU groups for 24 months period

New ConTex-Commentary - issued: 15.02.24

Also, this week the positive sentiment continues. For the sixth week in a row - in fact since the first week of this year - the New ConTex has risen, in total by 170 points (33%). Compared to that figure however, the week-on-week increases in the different segments look rather moderate between around 1 to a good 5 percent. Interestingly we see the higher increases of the 1100 and 1700 TEU vessels for the shorter periods whereas for the larger units long-term charters are in favor. This illustrates the demand expectations for larger units - certainly, the situation in the Red Sea pays its toll and still is the thriving factor. With the Asian market participants returning from their Lunar New Year's holidays, chartering activity will pick up, soon, and we are confident this will have another positive effect on periods and possibly/hopefully, depending whether you are Owner or Charterer, on the rates, too. It will not get boring.....

New ConTex Development											
Vessel type	Evaluated Period	Today	Week-on-Week		Month-on-Month			Year-on-Year			
		15.02.24	08.02.24	Change	Change	18.01.24	Change	Change	16.02.23	Change	Change
New ConTex*		684	663	21	↑ 3,2%	578	106	↑ 18,3%	733	-49	↓ -6,7%
1100 TEU	6 mos	\$8.689	\$8.496	\$193	↑ 2,3%	\$7.888	\$801	↑ 10,2%	\$11.865	-\$3.176	↓ -26,8%
	12 mos	\$7.968	\$7.815	\$153	↗ 2,0%	\$7.296	\$672	↑ 9,2%	\$11.050	-\$3.082	↓ -27,9%
1700 TEU	6 mos	\$11.177	\$10.696	\$481	↑ 4,5%	\$10.033	\$1.144	↑ 11,4%	\$14.046	-\$2.869	↓ -20,4%
	12 mos	\$10.239	\$9.931	\$308	↑ 3,1%	\$9.396	\$843	↑ 9,0%	\$13.321	-\$3.082	↓ -23,1%
1800 TEU	6 mos	\$13.027	\$12.800	\$227	↗ 1,8%	\$11.427	\$1.600	↑ 14,0%	-	-	-
2500 TEU	12 mos	\$15.684	\$15.216	\$468	↑ 3,1%	\$12.825	\$2.859	↑ 22,3%	\$17.059	-\$1.375	↓ -8,1%
	24 mos	\$13.234	\$12.691	\$543	↑ 4,3%	\$11.082	\$2.152	↑ 19,4%	\$14.623	-\$1.389	↓ -9,5%
2700 TEU	12 mos	\$16.923	\$16.775	\$148	↗ 0,9%	\$14.084	\$2.839	↑ 20,2%	\$17.434	-\$511	↓ -2,9%
	24 mos	\$14.566	\$14.318	\$248	↗ 1,7%	\$12.173	\$2.393	↑ 19,7%	\$15.341	-\$775	↓ -5,1%
3500 TEU	12 mos	\$19.375	\$18.770	\$605	↑ 3,2%	\$16.415	\$2.960	↑ 18,0%	\$18.543	\$832	↑ 4,5%
	24 mos	\$16.835	\$16.360	\$475	↑ 2,9%	\$14.420	\$2.415	↑ 16,7%	\$16.420	\$415	↑ 2,5%
4250 TEU	12 mos	\$23.550	\$22.455	\$1.095	↑ 4,9%	\$18.725	\$4.825	↑ 25,8%	\$19.740	\$3.810	↑ 19,3%
	24 mos	\$20.033	\$19.045	\$988	↑ 5,2%	\$16.390	\$3.643	↑ 22,2%	\$17.595	\$2.438	↑ 13,9%
5700 TEU	12 mos	\$28.833	\$27.761	\$1.072	↑ 3,9%	\$23.844	\$4.989	↑ 20,9%	\$26.656	\$2.177	↑ 8,2%
6500 TEU	12 mos	\$34.806	\$33.067	\$1.739	↑ 5,3%	\$26.128	\$8.678	↑ 33,2%	\$31.094	\$3.712	↑ 11,9%



Disclaimer

The brand NewConTex is copyrighted by Verband Hamburger und Bremer Schiffsmakler e.V. ("VHBS e.V.") and is protected by law. The NewConTex may be published only with the source reference © VHBS e.V. It is distributed to the general public for information purposes only and cannot be relied upon as a trading recommendation and does not constitute a solicitation to trade. The reported information is obtained from market sources. While every effort has been made to ensure the accuracy and the completeness of the NewConTex, VHBS e.V. makes no representations, conditions or warranties of any kind, express or implied, about the completeness, accuracy, reliability, or suitability of the NewConTex. Any reliance you place on the NewConTex is therefore strictly at your own risk. Neither VHBS e.V. nor any of its subsidiaries or affiliates nor any employee of the foregoing shall be liable or have any responsibility for any loss, liability or damage, cost or expense including without limitation, indirect or consequential loss or damage, or any loss or damage whatsoever arising from loss of data or profits arising out of, or in connection with, the use of and the reliance on the NewConTex, save for death or personal injury arising from VHBS e.V. negligence and fraudulent misrepresentation that cannot, under German law, be excluded.