

New ConTex Container Ship Time Charter Assessment Index

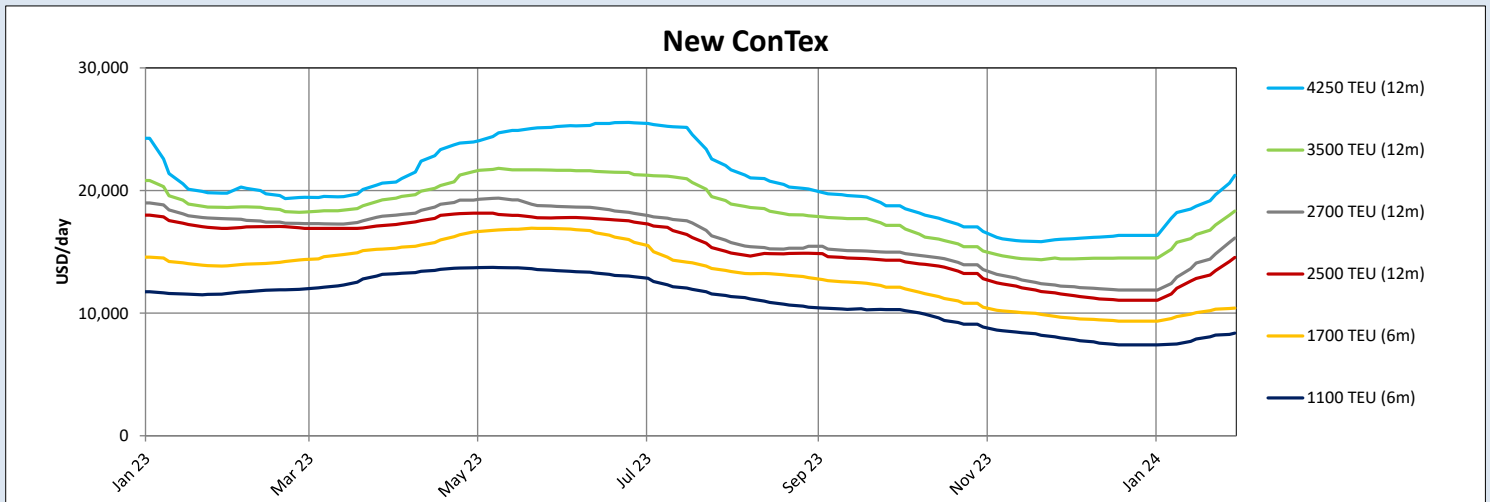
New ConTex*		641	
01/02/24		6 mos	12 mos
Geared	1100 TEU	\$8.370	n.a.
	1700 TEU	\$10.405	
	2500 TEU	\$14.552	
Gearless	2700 TEU	n.a.	\$16.130
	3500 TEU		\$18.335
	4250 TEU		\$21.235

Legend		
↑	up	+ 2% or more
↗	steady up	from +1% to +1,9%
→	steady	+/- 1%
↘	steady down	from -1% to -1,9%
↓	down	- 2% or less

*New ConTex evaluation is EXCLUDING 1800 TEU for 6 months period, 1100/1700/5700/6500 TEU groups for 12 months period & 2500/2700/3500/4250 TEU groups for 24 months period

New ConTex-Commentary - issued:	01/02/24
<p>The container market continued to be active across all segments and regions. It has become gradually more difficult to conclude fixtures in the last week or two, as the pace the market has been moving at leads to both sides having differing ideas on where the market should be. Owners are aggressively trying to improve available terms, particularly the period whilst Charterers do their best to resist. Activity in terms of fixtures slowed this week, but more to do with availability than any drop in demand. The index inevitably climbed again this week, 6% to 641 and we expect this to continue, despite the pending lunar new year interruptions. Like the previous weeks, it is the segments of 2500TEU and above that are experiencing the biggest positive changes for the time being with 6500TEU leading the way up double digits (11%) since last week. As the end of 2023 was rather dull it is natural to see that comparing to December, January is up between 20-35% on the 2500TEU and above, with the smallest feeders lagging slightly behind. We still have a way to go once you start to compare to same time last year, underlining the strength of the market back then. The one cloud on the horizon remains the smaller feeders below 2000 TEU, although we are starting to see a pickup in demand and available terms here also.</p>	

New ConTex Development											
Vessel type	Evaluated Period	Today	Week-on-Week		Month-on-Month		Year-on-Year				
		01/02/24	25/01/24	Change	Change	04/01/24	Change	Change	02/02/23	Change	Change
New ConTex*		641	605	36	↑ 6,0%	514	127	↑ 24,7%	730	-89	↓ -12,2%
1100 TEU	6 mos	\$8.370	\$8.220	\$150	↗ 1,8%	\$7.409	\$961	↑ 13,0%	\$11.600	-\$3.230	↓ -27,8%
	12 mos	\$7.707	\$7.584	\$123	↗ 1,6%	\$6.868	\$839	↑ 12,2%	\$10.746	-\$3.039	↓ -28,3%
1700 TEU	6 mos	\$10.405	\$10.316	\$89	↗ 0,9%	\$9.355	\$1.050	↑ 11,2%	\$13.850	-\$3.445	↓ -24,9%
	12 mos	\$9.736	\$9.614	\$122	↗ 1,3%	\$8.809	\$927	↑ 10,5%	\$13.073	-\$3.337	↓ -25,5%
1800 TEU	6 mos	\$12.430	\$11.866	\$564	↑ 4,8%	\$10.284	\$2.146	↑ 20,9%	-	-	-
2500 TEU	12 mos	\$14.552	\$13.466	\$1.086	↑ 8,1%	\$11.059	\$3.493	↑ 31,6%	\$16.905	-\$2.353	↓ -13,9%
	24 mos	\$12.264	\$11.509	\$755	↑ 6,6%	\$10.102	\$2.162	↑ 21,4%	\$14.686	-\$2.422	↓ -16,5%
2700 TEU	12 mos	\$16.130	\$14.827	\$1.303	↑ 8,8%	\$11.886	\$4.244	↑ 35,7%	\$17.700	-\$1.570	↓ -8,9%
	24 mos	\$13.818	\$12.777	\$1.041	↑ 8,1%	\$10.914	\$2.904	↑ 26,6%	\$15.514	-\$1.696	↓ -10,9%
3500 TEU	12 mos	\$18.335	\$17.195	\$1.140	↑ 6,6%	\$14.500	\$3.835	↑ 26,4%	\$18.620	-\$285	↘ -1,5%
	24 mos	\$16.020	\$14.988	\$1.032	↑ 6,9%	\$12.995	\$3.025	↑ 23,3%	\$16.568	-\$548	↓ -3,3%
4250 TEU	12 mos	\$21.235	\$19.660	\$1.575	↑ 8,0%	\$16.338	\$4.897	↑ 30,0%	\$19.785	\$1.450	↑ 7,3%
	24 mos	\$18.320	\$17.110	\$1.210	↑ 7,1%	\$14.745	\$3.575	↑ 24,2%	\$17.885	\$435	↑ 2,4%
5700 TEU	12 mos	\$26.206	\$24.706	\$1.500	↑ 6,1%	\$21.017	\$5.189	↑ 24,7%	\$26.833	-\$627	↓ -2,3%
6500 TEU	12 mos	\$30.089	\$27.017	\$3.072	↑ 11,4%	\$23.369	\$6.720	↑ 28,8%	\$31.711	-\$1.622	↓ -5,1%



Disclaimer

The brand NewConTex is copyrighted by Verband Hamburger und Bremer Schiffsmakler e.V. ("VHBS e.V.") and is protected by law. The NewConTex may be published only with the source reference © VHBS e.V. It is distributed to the general public for information purposes only and cannot be relied upon as a trading recommendation and does not constitute a solicitation to trade. The reported information is obtained from market sources. While every effort has been made to ensure the accuracy and the completeness of the NewConTex, VHBS e.V. makes no representations, conditions or warranties of any kind, express or implied, about the completeness, accuracy, reliability, or suitability of the NewConTex. Any reliance you place on the NewConTex is therefore strictly at your own risk. Neither VHBS e.V. nor any of its subsidiaries or affiliates nor any employee of the foregoing shall be liable or have any responsibility for any loss, liability or damage, cost or expense including without limitation, indirect or consequential loss or damage, or any loss or damage whatsoever arising from loss of data or profits arising out of, or in connection with, the use of and the reliance on the NewConTex, save for death or personal injury arising from VHBS e.V. negligence and fraudulent misrepresentation that cannot, under German law, be excluded.