



Verband Hamburger
und Bremer
Schiffsmakler e.V.

New ConTex Container Ship Time Charter Assessment Index

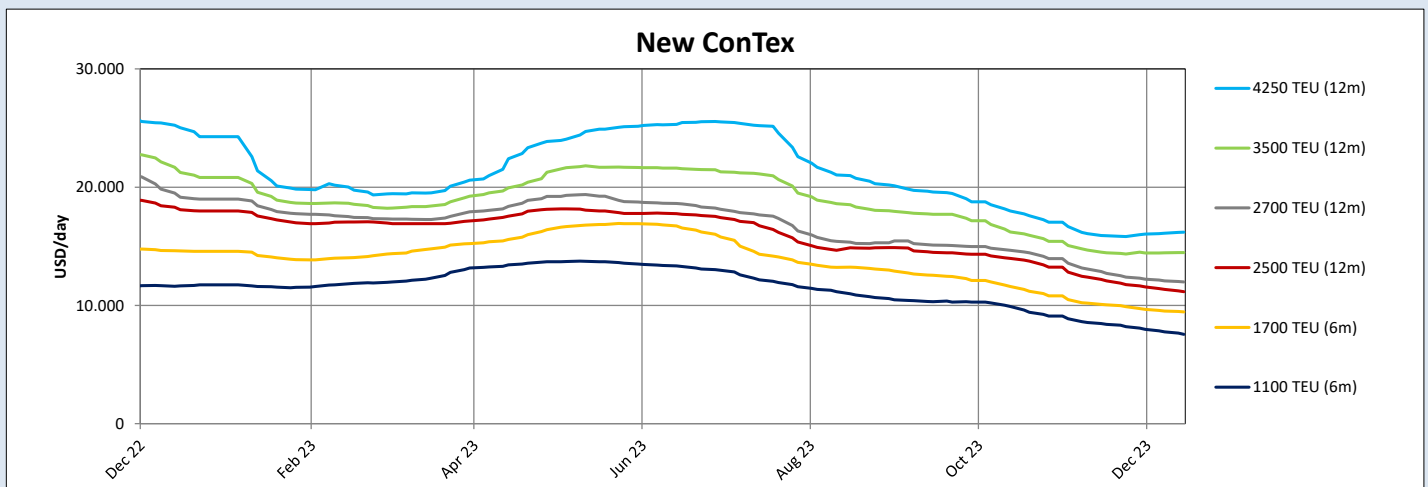
New ConTex*		517	
14.12.23		6 mos	12 mos
Geared	1100 TEU	\$7.554	n.a.
	1700 TEU	\$9.458	
	2500 TEU	\$11.155	
Gearless	2700 TEU	n.a.	\$11.991
	3500 TEU		\$14.470
	4250 TEU		\$16.195

Legend		
↑	up	+ 2% or more
↗	steady up	from +1% to +1,9%
→	steady	+/- 1%
↘	steady down	from -1% to -1,9%
↓	down	- 2% or less

*New ConTex evaluation is EXCLUDING 1800 TEU for 6 months period, 1100/1700/5700/6500 TEU groups for 12 months period & 2500/2700/3500/4250 TEU groups for 24 months period

New ConTex-Commentary - issued:		14.12.23
<p>The container charter market was again rather busy which, in the run up to the Christmas and new year festivities around the world, is rather unusual and this reflected in the small drop on the ConTex of only 4 points compared to last week index.</p> <p>But despite a healthy level of fixtures and a continuously shrinking supply of prompt tonnage, especially visible in the smaller sizes under 5,500 teu, charter rates remain on a weakening trend across the board, including for the largest ships. We believe that the low availability of tonnage in most segments should however spur a rate recovery in the new year, especially if the current rally in cargo demand observed on some routes sticks. Nevertheless, the massive orderbook, with 3 Mteu of newbuilding capacity due to hit the market in 2024 will be a significant threat to a lasting rebound. The return to the market of some chartered ships fixed on long-term contracts during Covid will also not help.</p>		

New ConTex Development											
Vessel type	Evaluated Period	Today	Week-on-Week		Month-on-Month		Year-on-Year				
		14.12.23	07.12.23	Change	Change	14.11.23	Change	Change	15.12.22	Change	Change
New ConTex*		517	521	-4	→ -0,8%	545	-28	↓ -5,1%	801	-284	↓ -35,5%
1100 TEU	6 mos	\$7.554	\$7.756	-\$202	↓ -2,6%	\$8.463	-\$909	↓ -10,7%	\$11.646	-\$4.092	↓ -35,1%
	12 mos	\$7.052	\$7.273	-\$221	↓ -3,0%	\$7.965	-\$913	↓ -11,5%	\$10.963	-\$3.911	↓ -35,7%
1700 TEU	6 mos	\$9.458	\$9.517	-\$59	→ -0,6%	\$10.088	-\$630	↓ -6,2%	\$14.602	-\$5.144	↓ -35,2%
	12 mos	\$8.921	\$9.006	-\$85	→ -0,9%	\$9.563	-\$642	↓ -6,7%	\$14.046	-\$5.125	↓ -36,5%
1800 TEU	6 mos	\$10.352	\$10.475	-\$123	↘ -1,2%	\$11.027	-\$675	↓ -6,1%	-	-	-
2500 TEU	12 mos	\$11.155	\$11.348	-\$193	↘ -1,7%	\$12.198	-\$1.043	↓ -8,6%	\$18.086	-\$6.931	↓ -38,3%
	24 mos	\$10.177	\$10.334	-\$157	↘ -1,5%	\$10.920	-\$743	↓ -6,8%	\$15.641	-\$5.464	↓ -34,9%
2700 TEU	12 mos	\$11.991	\$12.080	-\$89	→ -0,7%	\$12.857	-\$866	↓ -6,7%	\$19.150	-\$7.159	↓ -37,4%
	24 mos	\$11.000	\$11.095	-\$95	→ -0,9%	\$11.639	-\$639	↓ -5,5%	\$16.636	-\$5.636	↓ -33,9%
3500 TEU	12 mos	\$14.470	\$14.445	\$25	→ 0,2%	\$14.493	-\$23	→ -0,2%	\$21.240	-\$6.770	↓ -31,9%
	24 mos	\$13.000	\$12.985	\$15	→ 0,1%	\$13.138	-\$138	↘ -1,1%	\$18.440	-\$5.440	↓ -29,5%
4250 TEU	12 mos	\$16.195	\$16.110	\$85	→ 0,5%	\$15.915	\$280	↗ 1,8%	\$25.030	-\$8.835	↓ -35,3%
	24 mos	\$14.715	\$14.615	\$100	→ 0,7%	\$14.560	\$155	↗ 1,1%	\$21.600	-\$6.885	↓ -31,9%
5700 TEU	12 mos	\$20.917	\$21.267	-\$350	↘ -1,6%	\$22.828	-\$1.911	↓ -8,4%	\$33.883	-\$12.966	↓ -38,3%
6500 TEU	12 mos	\$23.511	\$24.272	-\$761	↓ -3,1%	\$25.894	-\$2.383	↓ -9,2%	\$40.472	-\$16.961	↓ -41,9%



Disclaimer

The brand NewConTex is copyrighted by Verband Hamburger und Bremer Schiffsmakler e.V. ("VHBS e.V.") and is protected by law. The NewConTex may be published only with the source reference © VHBS e.V. It is distributed to the general public for information purposes only and cannot be relied upon as a trading recommendation and does not constitute a solicitation to trade. The reported information is obtained from market sources. While every effort has been made to ensure the accuracy and the completeness of the NewConTex, VHBS e.V. makes no representations, conditions or warranties of any kind, express or implied, about the completeness, accuracy, reliability, or suitability of the NewConTex. Any reliance you place on the NewConTex is therefore strictly at your own risk. Neither VHBS e.V. nor any of its subsidiaries or affiliates nor any employee of the foregoing shall be liable or have any responsibility for any loss, liability or damage, cost or expense including without limitation, indirect or consequential loss or damage, or any loss or damage whatsoever arising from loss of data or profits arising out of, or in connection with, the use of and the reliance on the NewConTex, save for death or personal injury arising from VHBS e.V. negligence and fraudulent misrepresentation that cannot, under German law, be excluded.