



Verband Hamburger  
und Bremer  
Schiffsmakler e.V.

## New ConTex Container Ship Time Charter Assessment Index

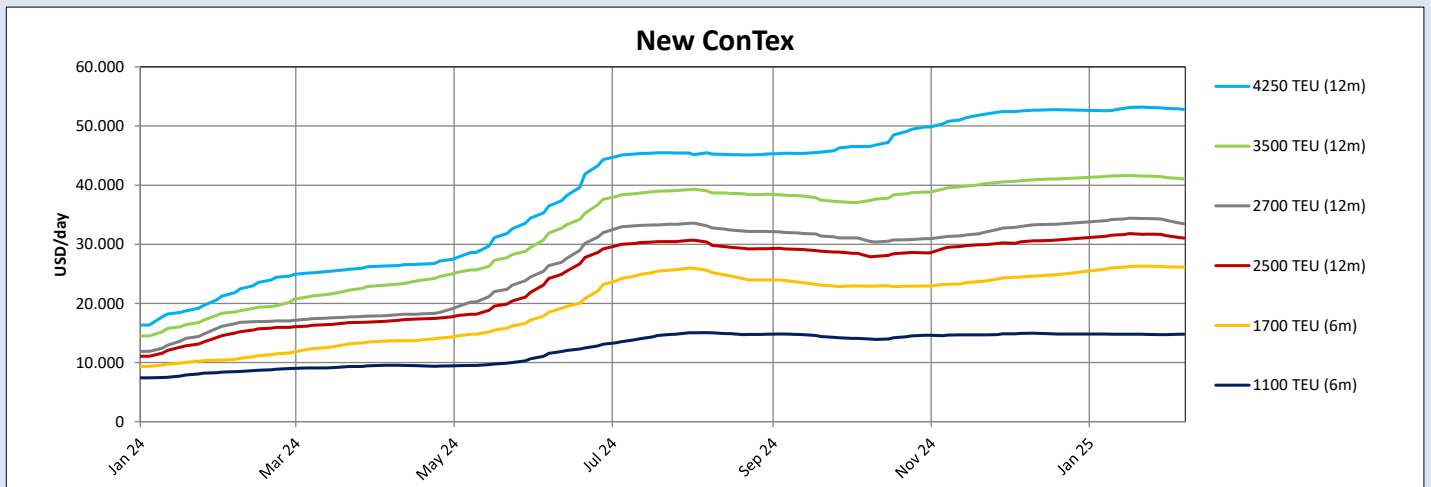
New ConTex*		1412	
06.02.25		6 mos	12 mos
Gated	1100 TEU	\$14.795	n.a.
	1700 TEU	\$26.150	
	2500 TEU	\$31.041	
Gearless	2700 TEU	n.a.	\$33.477
	3500 TEU		\$41.025
	4250 TEU		\$52.780

Legend		
↑	up	+ 2% or more
↗	steady up	from +1% to +1,9%
→	steady	+/- 1%
↘	steady down	from -1% to -1,9%
↓	down	- 2% or less

\*New ConTex evaluation is EXCLUDING 1800 TEU for 6 months period, 1100/1700/5700/6500 TEU groups for 12 months period & 2500/2700/3500/4250 TEU groups for 24 months period

New ConTex-Commentary - issued:		06.02.25
<p>In Week 06, the New ConTex index recorded a slight decline of 0.6%, settling at 1,412 points, compared to 1,421 points last week. This marks a 0.7% drop month-on-month, indicating a gradual cooling in certain vessel segments. However, on a year-on-year basis, the index has surged 113.0%, reflecting the continued strength of the container charter market despite short-term fluctuations.</p> <p>While the overall market showed a marginal downward adjustment, the 1100 TEU and 1700 TEU segments exhibited resilience, with week-on-week increases of 0.5% and 0.9%, respectively. These gains suggest steady demand for smaller feeder vessels, particularly in regional trades. Meanwhile, larger vessels such as the 5700 TEU and 6500 TEU segments saw minor declines of 0.3% and 0.2% week-on-week, though their month-on-month figures remained stable or slightly positive, indicating continued demand for long-haul trades.</p> <p>Conversely, mid-sized vessels, including the 2500 TEU, 2700 TEU, and 3500 TEU categories, experienced more pronounced week-on-week declines, ranging from 0.6% to 1.8%. This downward trend suggests that charterers are adjusting their fleet strategies, potentially in response to market normalization after the robust growth phases seen in recent months.</p> <p>Looking ahead, despite short-term corrections, demand remains significantly higher than historical levels, particularly for larger vessels, which continue to benefit from their strategic role in global trade. The year-on-year gains across all vessel segments remain impressive, with most categories showing increases well above 100% compared to the same period last year.</p> <p>The charter market is expected to remain tight, with shipowners carefully managing capacity to avoid oversupply. Larger vessels will likely continue to command strong rates, as efficiency and economies of scale remain crucial in navigating fluctuating bunker prices and operational costs. Overall, while some cooling is evident, the broader market fundamentals remain positive, supporting a stable outlook for the container charter sector.</p>		

New ConTex Development											
Vessel type	Evaluated Period	Today	Week-on-Week		Month-on-Month		Year-on-Year				
		06.02.25	30.01.25	Change	Change	09.01.25	Change	Change	08.02.24	Change	Change
<b>New ConTex*</b>		<b>1412</b>	1421	-9	⇒ -0,6%	1422	-10	⇒ -0,7%	663	749	↑ 113,0%
1100 TEU	6 mos	\$14.795	\$14.727	\$68	⇒ 0,5%	\$14.800	-\$5	⇒ 0,0%	\$8.496	\$6.299	↑ 74,1%
	12 mos	\$14.048	\$13.950	\$98	⇒ 0,7%	\$14.055	-\$7	⇒ 0,0%	\$7.815	\$6.233	↑ 79,8%
1700 TEU	6 mos	\$26.150	\$26.186	-\$36	⇒ -0,1%	\$26.005	\$145	⇒ 0,6%	\$10.696	\$15.454	↑ 144,5%
	12 mos	\$22.864	\$22.655	\$209	⇒ 0,9%	\$22.514	\$350	↗ 1,6%	\$9.931	\$12.933	↑ 130,2%
1800 TEU	6 mos	\$29.782	\$29.914	-\$132	⇒ -0,4%	\$29.836	-\$54	⇒ -0,2%	\$12.800	\$16.982	↑ 132,7%
	12 mos	\$31.041	\$31.468	-\$427	⇒ -1,4%	\$31.536	-\$495	⇒ -1,6%	\$15.216	\$15.825	↑ 104,0%
2500 TEU	24 mos	\$25.695	\$26.132	-\$437	⇒ -1,7%	\$26.318	-\$623	⇒ -2,4%	\$12.691	\$13.004	↑ 102,5%
	12 mos	\$33.477	\$34.059	-\$582	⇒ -1,7%	\$34.186	-\$709	⇒ -2,1%	\$16.775	\$16.702	↑ 99,6%
2700 TEU	24 mos	\$27.568	\$28.082	-\$514	⇒ -1,8%	\$28.086	-\$518	⇒ -1,8%	\$14.318	\$13.250	↑ 92,5%
	12 mos	\$41.025	\$41.270	-\$245	⇒ -0,6%	\$41.580	-\$555	⇒ -1,3%	\$18.770	\$22.255	↑ 118,6%
3500 TEU	24 mos	\$32.915	\$33.093	-\$178	⇒ -0,5%	\$33.430	-\$515	⇒ -1,5%	\$16.360	\$16.555	↑ 101,2%
	12 mos	\$52.780	\$52.980	-\$200	⇒ -0,4%	\$52.615	\$165	⇒ 0,3%	\$22.455	\$30.325	↑ 135,0%
4250 TEU	24 mos	\$40.775	\$41.065	-\$290	⇒ -0,7%	\$41.156	-\$381	⇒ -0,9%	\$19.045	\$21.730	↑ 114,1%
	12 mos	\$60.806	\$60.972	-\$166	⇒ -0,3%	\$60.461	\$345	⇒ 0,6%	\$27.761	\$33.045	↑ 119,0%
5700 TEU	12 mos	\$67.906	\$68.011	-\$105	⇒ -0,2%	\$67.622	\$284	⇒ 0,4%	\$33.067	\$34.839	↑ 105,4%



Disclaimer

The brand NewConTex is copyrighted by Verband Hamburger und Bremer Schiffsmakler e.V. ("VHBS e.V.") and is protected by law. The NewConTex may be published only with the source reference © VHBS e.V. It is distributed to the general public for information purposes only and cannot be relied upon as a trading recommendation and does not constitute a solicitation to trade. The reported information is obtained from market sources. While every effort has been made to ensure the accuracy and the completeness of the NewConTex, VHBS e.V. makes no representations, conditions or warranties of any kind, express or implied, about the completeness, accuracy, reliability, or suitability of the NewConTex. Any reliance you place on the NewConTex is therefore strictly at your own risk. Neither VHBS e.V. nor any of its subsidiaries or affiliates nor any employee of the foregoing shall be liable or have any responsibility for any loss, liability or damage, cost or expense including without limitation, indirect or consequential loss or damage, or any loss or damage whatsoever arising from loss of data or profits arising out of, or in connection with, the use of and the reliance on the NewConTex, save for death or personal injury arising from VHBS e.V. negligence and fraudulent misrepresentation that cannot, under German law, be excluded.