

New ConTex Container Ship Time Charter Assessment Index

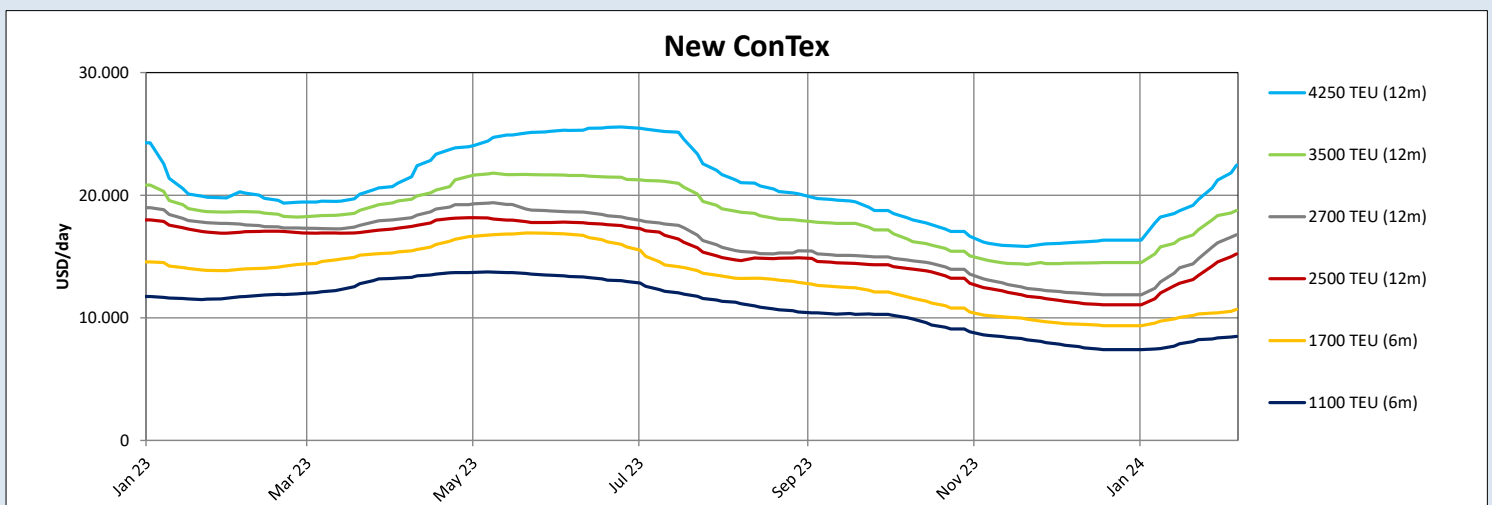
New ConTex*		663	
08.02.24		6 mos	12 mos
Geared	1100 TEU	\$8.496	n.a.
	1700 TEU	\$10.696	
	2500 TEU		\$15.216
Gearless	2700 TEU	n.a.	\$16.775
	3500 TEU		\$18.770
	4250 TEU		\$22.455

Legend		
↑	up	+ 2% or more
↗	steady up	from +1% to +1,9%
→	steady	+/- 1 %
↘	steady down	from -1% to -1,9%
↓	down	- 2% or less

*New ConTex evaluation is EXCLUDING 1800 TEU for 6 months period, 1100/1700/5700/6500 TEU groups for 12 months period & 2500/2700/3500/4250 TEU groups for 24 months period

New ConTex-Commentary - issued:	08.02.24
<p>The New ConTex has continued its upward momentum, gaining another 3.4% w-o-w and 20.3% m-o-m. Activity has been solid this week despite the approaching Lunar New Year festivities in Asia.</p> <p>Panamaxes and post Panamaxes continue to thrive on the back of strong demand with hire rates strengthening every week. Also, periods are becoming longer with post Panamaxes now firmly in two years territory and Panamax owners pushing very hard to get there as well.</p> <p>A bit less excitement can be noted in the 2500-3500 TEU segments but conditions still remain very healthy, with the Med and PG areas appearing to be stronger than Far East.</p> <p>Still lagging behind are the smaller feeders, although also here we have seen solid gains recently with 1100 TEU up 13.4% m-o-m and 1700 TEU up 10% m-o-m. There remains a difference between Atlantic and Asia with the latter usually having to fight with sufficient supply, even though this has improved recently.</p> <p>Going forward the fate of the charter market during the next weeks and months will certainly be decided largely by the Red Sea situation while at the same time all regional Asian players will hope for the Chinese economy to finally pick up after the Lunar New Year.</p> <p>Happy Lunar New Year, Gong Xi Fa Cai !</p>	

New ConTex Development											
Vessel type	Evaluated Period	Today	Week-on-Week		Month-on-Month			Year-on-Year			
		08.02.24	01.02.24	Change	Change	11.01.24	Change	Change	09.02.23	Change	Change
New ConTex*		663	641	22	↑ 3,4%	551	112	↑ 20,3%	735	-72	↓ -9,8%
1100 TEU	6 mos	\$8.496	\$8.370	\$126	↗ 1,5%	\$7.490	\$1.006	↑ 13,4%	\$11.746	-\$3.250	↓ -27,7%
	12 mos	\$7.815	\$7.707	\$108	↗ 1,4%	\$6.938	\$877	↑ 12,6%	\$10.954	-\$3.139	↓ -28,7%
1700 TEU	6 mos	\$10.696	\$10.405	\$291	↑ 2,8%	\$9.727	\$969	↑ 10,0%	\$13.998	-\$3.302	↓ -23,6%
	12 mos	\$9.931	\$9.736	\$195	↑ 2,0%	\$9.092	\$839	↑ 9,2%	\$13.288	-\$3.357	↓ -25,3%
1800 TEU	6 mos	\$12.800	\$12.430	\$370	↑ 3,0%	\$10.977	\$1.823	↑ 16,6%	-	-	-
2500 TEU	12 mos	\$15.216	\$14.552	\$664	↑ 4,6%	\$12.023	\$3.193	↑ 26,6%	\$17.032	-\$1.816	↓ -10,7%
	24 mos	\$12.691	\$12.264	\$427	↑ 3,5%	\$10.655	\$2.036	↑ 19,1%	\$14.664	-\$1.973	↓ -13,5%
2700 TEU	12 mos	\$16.775	\$16.130	\$645	↑ 4,0%	\$12.934	\$3.841	↑ 29,7%	\$17.575	-\$800	↓ -4,6%
	24 mos	\$14.318	\$13.818	\$500	↑ 3,6%	\$11.625	\$2.693	↑ 23,2%	\$15.464	-\$1.146	↓ -7,4%
3500 TEU	12 mos	\$18.770	\$18.335	\$435	↑ 2,4%	\$15.778	\$2.992	↑ 19,0%	\$18.668	\$102	↗ 0,5%
	24 mos	\$16.360	\$16.020	\$340	↑ 2,1%	\$14.055	\$2.305	↑ 16,4%	\$16.538	-\$178	↘ -1,1%
4250 TEU	12 mos	\$22.455	\$21.235	\$1.220	↑ 5,7%	\$18.213	\$4.242	↑ 23,3%	\$20.170	\$2.285	↑ 11,3%
	24 mos	\$19.045	\$18.320	\$725	↑ 4,0%	\$15.985	\$3.060	↑ 19,1%	\$17.865	\$1.180	↑ 6,6%
5700 TEU	12 mos	\$27.761	\$26.206	\$1.555	↑ 5,9%	\$22.533	\$5.228	↑ 23,2%	\$26.722	\$1.039	↑ 3,9%
6500 TEU	12 mos	\$33.067	\$30.089	\$2.978	↑ 9,9%	\$24.778	\$8.289	↑ 33,5%	\$31.600	\$1.467	↑ 4,6%



Disclaimer

The brand NewConTex is copyrighted by Verband Hamburger und Bremer Schiffsmakler e.V. ("VHBS e.V.") and is protected by law. The NewConTex may be published only with the source reference © VHBS e.V. It is distributed to the general public for information purposes only and cannot be relied upon as a trading recommendation and does not constitute a solicitation to trade. The reported information is obtained from market sources. While every effort has been made to ensure the accuracy and the completeness of the NewConTex, VHBS e.V. makes no representations, conditions or warranties of any kind, express or implied, about the completeness, accuracy, reliability, or suitability of the NewConTex. Any reliance you place on the NewConTex is therefore strictly at your own risk. Neither VHBS e.V. nor any of its subsidiaries or affiliates nor any employee of the foregoing shall be liable or have any responsibility for any loss, liability or damage, cost or expense including without limitation, indirect or consequential loss or damage, or any loss or damage whatsoever arising from loss of data or profits arising out of, or in connection with, the use of and the reliance on the NewConTex, save for death or personal injury arising from VHBS e.V. negligence and fraudulent misrepresentation that cannot, under German law, be excluded.