



## New ConTex Container Ship Time Charter Assessment Index

New ConTex*		730	
23.02.23		6 mos	12 mos
Geared	1100 TEU	\$11.898	n.a.
	1700 TEU	\$14.208	
	2500 TEU	\$17.045	
Gearless	2700 TEU	n.a.	\$17.336
	3500 TEU		\$18.278
	4250 TEU		\$19.345

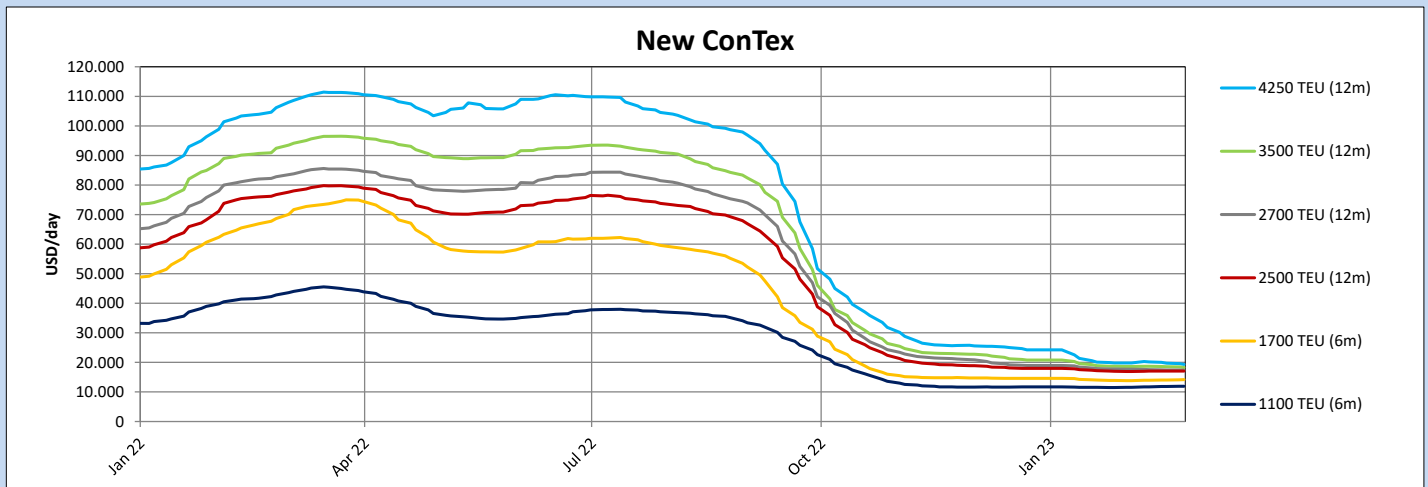
Legend		
↑	up	+ 2% or more
↗	steady up	from +1% to +1,9%
→	steady	+/- 1 %
↘	steady down	from -1% to -1,9%
↓	down	- 2% or less

\*New ConTex evaluation is EXCLUDING 1100/1700/5700/6500 TEU groups for 12 months period & 2500/2700/3500/4250 TEU groups for 24 months period

**New ConTex-Commentary - issued: 23.02.23**

The overall sentiment had cooled down this week. The Shanghai Containerized Freight Index (SCFI) declined further. It has just lost another 3 per cent week on week. Also fixing activity of container vessels shrunk a bit but charter rate levels remaining stable in almost all tonnage segments. Consequently The New ConTex did not change much either, it just declined by 3 points respectively 0,4% week-on-week. While the supply of post panamax vessels remains comparatively tight, there are still several spot / prompt panamax vessels around that are putting pressure on charter rates for tonnage of 3000-5000 TEU. The New ConTex for 12 months periods for 3500 TEU and 4250 TEU vessels declined by 1,4% respectively 2% week-on-week. Especially in the Atlantic basin, but also in Asia charter rates for container feeder vessels have been stabilizing recently and actually started to rise again with owners are succeeding with longer period commitments in some cases. The New ConTex for 1700 TEU vessels for 6 and 12 months periods rose by 1,2% and 1,1% respectively week-on-week.

New ConTex Development											
Vessel type	Evaluated Period	Today	Week-on-Week		Month-on-Month			Year-on-Year			
		23.02.23	16.02.23	Change	Change	24.01.23	Change	Change	24.02.22	Change	Change
<b>New ConTex*</b>		<b>730</b>	733	-3	↔ -0,4%	732	-2	↔ -0,3%	3408	-2.678	↓ -78,6%
1100 TEU	6 mos	\$11.898	\$11.865	\$33	↗ 0,3%	\$11.488	\$410	↑ 3,6%	\$42.825	-\$30.927	↓ -72,2%
	12 mos	\$11.071	\$11.050	\$21	↗ 0,2%	\$10.533	\$538	↑ 5,1%	\$37.933	-\$26.862	↓ -70,8%
1700 TEU	6 mos	\$14.208	\$14.046	\$162	↗ 1,2%	\$13.908	\$300	↑ 2,2%	\$68.629	-\$54.421	↓ -79,3%
	12 mos	\$13.469	\$13.321	\$148	↗ 1,1%	\$13.217	\$252	↗ 1,9%	\$60.983	-\$47.514	↓ -77,9%
2500 TEU	12 mos	\$17.045	\$17.059	-\$14	↔ -0,1%	\$17.045	\$0	↔ 0,0%	\$76.741	-\$59.696	↓ -77,8%
	24 mos	\$14.661	\$14.623	\$38	↗ 0,3%	\$14.845	-\$184	↘ -1,2%	\$56.036	-\$41.375	↓ -73,8%
2700 TEU	12 mos	\$17.336	\$17.434	-\$98	↘ -0,6%	\$17.800	-\$464	↓ -2,6%	\$82.786	-\$65.450	↓ -79,1%
	24 mos	\$15.345	\$15.341	\$4	↔ 0,0%	\$15.623	-\$278	↘ -1,8%	\$61.091	-\$45.746	↓ -74,9%
3500 TEU	12 mos	\$18.278	\$18.543	-\$265	↘ -1,4%	\$18.715	-\$437	↓ -2,3%	\$92.450	-\$74.172	↓ -80,2%
	24 mos	\$16.328	\$16.420	-\$92	↘ -0,6%	\$16.673	-\$345	↓ -2,1%	\$71.320	-\$54.992	↓ -77,1%
4250 TEU	12 mos	\$19.345	\$19.740	-\$395	↓ -2,0%	\$19.920	-\$575	↓ -2,9%	\$106.200	-\$86.855	↓ -81,8%
	24 mos	\$17.390	\$17.595	-\$205	↘ -1,2%	\$17.994	-\$604	↓ -3,4%	\$81.585	-\$64.195	↓ -78,7%
5700 TEU	12 mos	\$26.356	\$26.656	-\$300	↘ -1,1%	\$27.250	-\$894	↓ -3,3%	\$120.744	-\$94.388	↓ -78,2%
6500 TEU	12 mos	\$30.750	\$31.094	-\$344	↘ -1,1%	\$32.361	-\$1.611	↓ -5,0%	\$127.800	-\$97.050	↓ -75,9%



Disclaimer

The brand NewConTex is copyrighted by Verband Hamburger und Bremer Schiffsmakler e.V. ("VHBS e.V.") and is protected by law. The NewConTex may be published only with the source reference © VHBS e.V. It is distributed to the general public for information purposes only and cannot be relied upon as a trading recommendation and does not constitute a solicitation to trade. The reported information is obtained from market sources. While every effort has been made to ensure the accuracy and the completeness of the NewConTex, VHBS e.V. makes no representations, conditions or warranties of any kind, express or implied, about the completeness, accuracy, reliability, or suitability of the NewConTex. Any reliance you place on the NewConTex is therefore strictly at your own risk. Neither VHBS e.V. nor any of its subsidiaries or affiliates nor any employee of the foregoing shall be liable or have any responsibility for any loss, liability or damage, cost or expense including without limitation, indirect or consequential loss or damage, or any loss or damage whatsoever arising from loss of data or profits arising out of, or in connection with, the use of and the reliance on the NewConTex, save for death or personal injury arising from VHBS e.V. negligence and fraudulent misrepresentation that cannot, under German law, be excluded.