



## New ConTex Container Ship Time Charter Assessment Index

New ConTex*		308	
20.10.16		12 mos	24 mos
Gearless	1100 TEU	\$6.489	n.a.
	1700 TEU	\$6.711	
	2500 TEU	\$5.648	
Gearless	2700 TEU	\$6.109	\$7.133
	3500 TEU	\$5.464	\$6.834
	4250 TEU	\$4.461	\$6.746

Legend		
↑	up	+ 2% or more
↗	steady up	from +1% to +1,9%
→	steady	+/- 1%
↘	steady down	from -1% to -1,9%
↓	down	- 2% or less

\*New ConTex evaluation is EXCLUDING 2500/2700/3500/4250 TEU groups for 12 months period

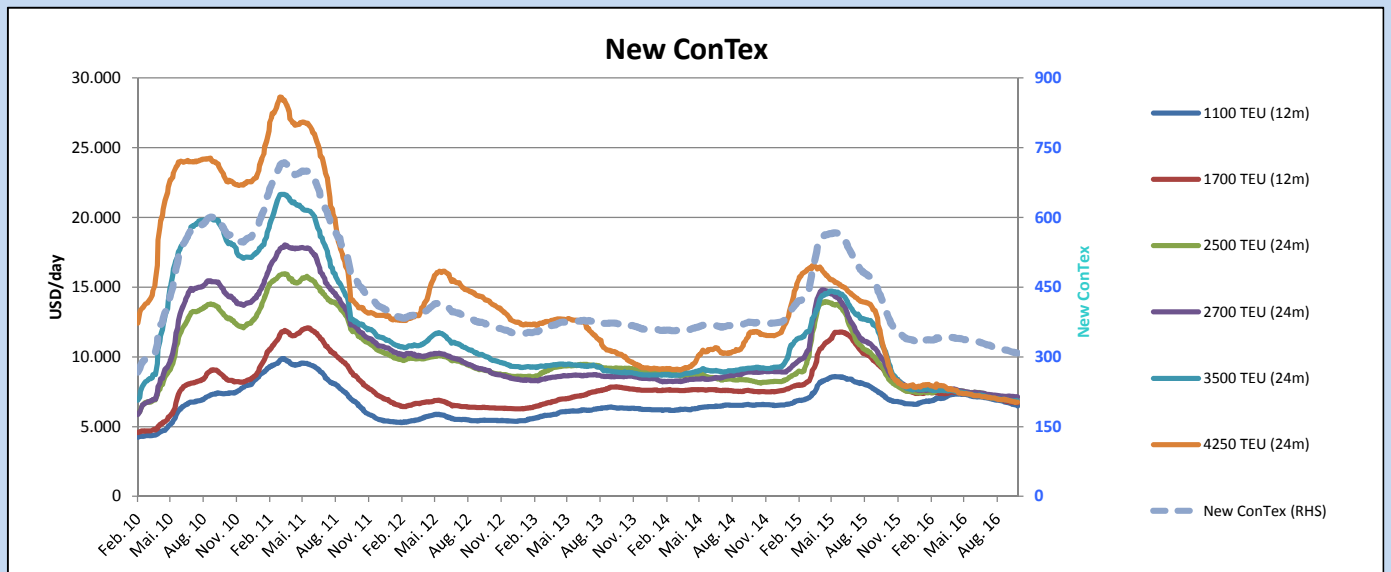
**New ConTex-Commentary - issued: 20.10.16**

The container market continues its slow steady decline, with the New ConTex Index losing another point to stand at 308. The psychological 300 points mark is getting uncomfortably close. With the slack season approaching and with Owners seemingly prepared to keep fixing at levels slightly below last-done, it seems almost inevitable the index will slide below the 300 mark before the end of the year.

However an assessment of the movements recorded in the last week are not entirely gloomy. Slight upward adjustments were noted for the 2700 TEUs and 3500 TEUs (basis 12 months) and very slight upward adjustments were apparent for 2700 TEUs and 4250 TEUs (basis 24 months).

It has to be stated, though, that the trend remains down for the market as a whole. Either global trade will have to rise sharply (unfortunately rather unlikely at the moment) or scrapping/laying-up will have to move up several gears if there is to be any noticeable change to the predicament in which this industry finds itself.

Vessel type		Evaluated Period	Today	Week-on-Week		Month-on-Month			Year-on-Year			
			20.10.16	13.10.16	Change	Change	20.09.16	Change	Change	20.10.15	Change	Change
<b>New ConTex*</b>			<b>308</b>	309	-1	↔ -0,3%	314	-6	-1,9%	407	-99	-24,3%
New ConTex	1100 TEU	12 mos	\$6.489	\$6.574	-\$85	↘ -1,3%	\$6.737	-\$248	-3,7%	\$7.139	-650	-9,1%
	1700 TEU		\$6.711	\$6.745	-\$34	↘ -0,5%	\$6.812	-\$101	-1,5%	\$8.972	-2.261	-25,2%
	2500 TEU		\$6.861	\$6.909	-\$48	↘ -0,7%	\$6.992	-\$131	-1,9%	\$8.941	-2.080	-23,3%
	2700 TEU	24 mos	\$7.133	\$7.131	\$2	↔ 0,0%	\$7.176	-\$43	-0,6%	\$9.562	-2.429	-25,4%
	3500 TEU		\$6.834	\$6.843	-\$9	↘ -0,1%	\$6.903	-\$69	-1,0%	\$10.454	-3.620	-34,6%
	4250 TEU		\$6.746	\$6.744	\$2	↔ 0,0%	\$6.915	-\$169	-2,4%	\$10.371	-3.625	-35,0%
2500 TEU	12 mos	\$5.648	\$5.691	-\$43	↘ -0,8%	\$5.768	-\$120	-2,1%	\$7.872	-2.224	-28,3%	
2700 TEU		\$6.109	\$6.093	\$16	↗ 0,3%	\$6.052	\$57	0,9%	\$8.500	-2.391	-28,1%	
3500 TEU		\$5.464	\$5.454	\$10	↗ 0,2%	\$5.386	\$78	1,4%	\$9.410	-3.946	-41,9%	
4250 TEU		\$4.461	\$4.553	-\$92	↓ -2,0%	\$4.710	-\$249	-5,3%	\$8.689	-4.228	-48,7%	



**Disclaimer**

The brand NewConTex is copyrighted by Vereinigung Hamburger Schiffsmakler und Schiffsagenten e.V. ("VHSS e.V.") and is protected by law. The NewConTex may be published only with the source reference © VHSS e.V. It is distributed to the general public for information purposes only and cannot be relied upon as a trading recommendation and does not constitute a solicitation to trade. The reported information is obtained from market sources. While every effort has been made to ensure the accuracy and the completeness of the NewConTex, VHSS e.V. makes no representations, conditions or warranties of any kind, express or implied, about the completeness, accuracy, reliability, or suitability of the NewConTex. Any reliance you place on the NewConTex is therefore strictly at your own risk. Neither VHSS e.V. nor any of its subsidiaries or affiliates nor any employee of the foregoing shall be liable or have any responsibility for any loss, liability or damage, cost or expense including without limitation, indirect or consequential loss or damage, or any loss or damage whatsoever arising from loss of data or profits arising out of, or in connection with, the use of and the reliance on the NewConTex, save for death or personal injury arising from VHSS e.V. negligence and fraudulent misrepresentation that cannot, under German law, be excluded.