



New ConTex Container Ship Time Charter Assessment Index

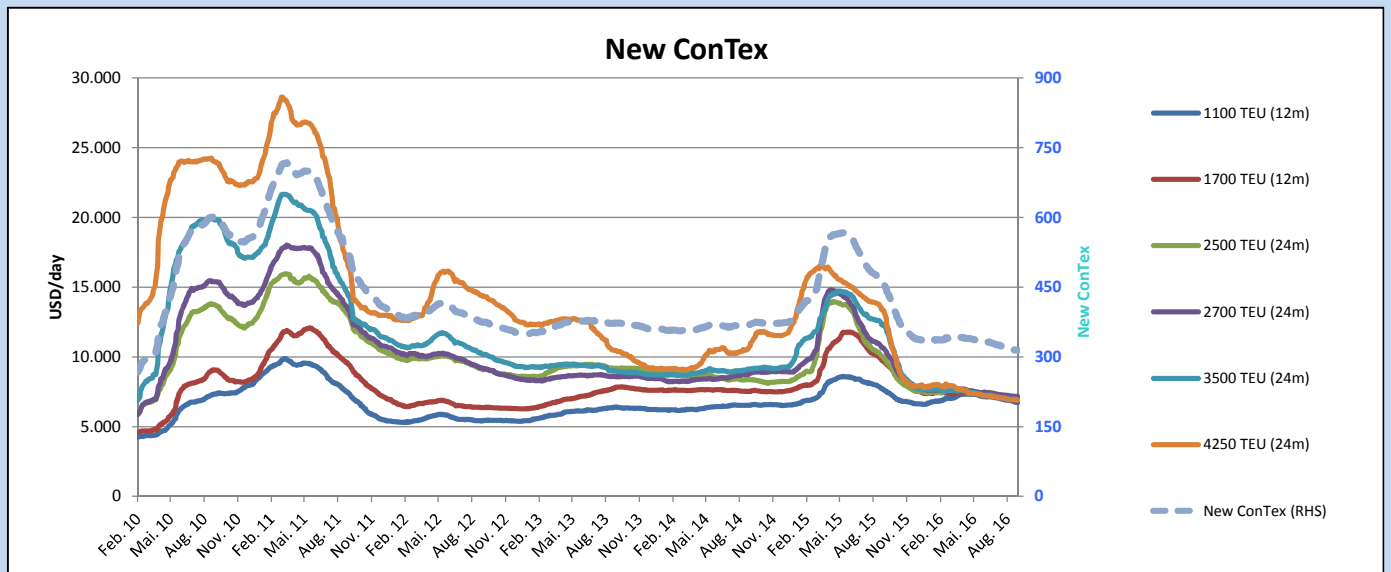
New ConTex*		314	
22.09.16		12 mos	24 mos
Geared	1100 TEU	\$6.730	n.a.
	1700 TEU	\$6.798	
	2500 TEU	\$5.755	
Gearless	2700 TEU	\$6.058	\$7.179
	3500 TEU	\$5.391	\$6.910
	4250 TEU	\$4.669	\$6.889

Legend		
↑	up	+ 2% or more
↗	steady up	from +1% to +1,9%
→	steady	+/- 1 %
↘	steady down	from -1% to -1,9%
↓	down	- 2% or less

*New ConTex evaluation is EXCLUDING 2500/2700/3500/4250 TEU groups for 12 months period

New ConTex-Commentary - issued:	22.09.16
<p>The container charter market remains in the doldrums, with a continued sluggish demand and static charter rates for most vessel sizes reflected in the New ConTex drop of 1 point reaching 314 points similar to levels we saw in 2010!</p> <p>Overcapacity continues to plague the Classic Panamax segment, with nearly 90 vessels in search of a new employment. Overcapacity also remains an issue in the 2,000-2,700 TEU geared segment whilst the once promising 1,000-1,200 TEU segment is taking a dive, with a collapse in demand and a strong increase in the supply of tonnage. Only the larger sizes, 5,500 TEU and over, continue to fare better, although charter rates remain at historical lows.</p> <p>All in all, the market outlook remains extremely hazy, and the unknowns created by the collapse of Hanjin Shipping and a new feeder policy decided by CMA CGM are adding further uncertainties to an already grim trading and with the autumn low season ahead no one unfortunately can expect a market rebound.</p>	

		New ConTex Development										
Vessel type	Evaluated Period	Today	Week-on-Week		Month-on-Month			Year-on-Year				
		22.09.16	15.09.16	Change	Change	23.08.16	Change	Change	22.09.15	Change	Change	
New ConTex*		314	315	-1	↔ -0,3%	320	-6	-1,9%	458	-144	-31,4%	
New ConTex	12 mos	1100 TEU	\$6.730	\$6.766	-\$36	↔ -0,5%	\$6.897	-\$167	-2,4%	\$7.658	-928	-12,1%
		1700 TEU	\$6.798	\$6.841	-\$43	↔ -0,6%	\$7.001	-\$203	-2,9%	\$9.711	-2.913	-30,0%
		2500 TEU	\$6.998	\$7.004	-\$6	↔ -0,1%	\$7.105	-\$107	-1,5%	\$9.971	-2.973	-29,8%
	24 mos	2700 TEU	\$7.179	\$7.174	\$5	↔ 0,1%	\$7.244	-\$65	-0,9%	\$10.608	-3.429	-32,3%
		3500 TEU	\$6.910	\$6.925	-\$15	↔ -0,2%	\$7.003	-\$93	-1,3%	\$12.256	-5.346	-43,6%
		4250 TEU	\$6.889	\$6.925	-\$36	↔ -0,5%	\$6.986	-\$97	-1,4%	\$13.321	-6.432	-48,3%
New ConTex	12 mos	2500 TEU	\$5.755	\$5.772	-\$17	↔ -0,3%	\$5.868	-\$113	-1,9%	\$8.786	-3.031	-34,5%
		2700 TEU	\$6.058	\$6.048	\$10	↔ 0,2%	\$6.072	-\$14	-0,2%	\$9.413	-3.355	-35,6%
		3500 TEU	\$5.391	\$5.381	\$10	↔ 0,2%	\$5.424	-\$33	-0,6%	\$11.192	-5.801	-51,8%
		4250 TEU	\$4.669	\$4.747	-\$78	↘ -1,6%	\$4.908	-\$239	-4,9%	\$12.116	-7.447	-61,5%



Disclaimer

The brand NewConTex is copyrighted by Vereinigung Hamburger Schiffsmakler und Schiffsagenten e.V. ("VHSS e.V.") and is protected by law. The NewConTex may be published only with the source reference © VHSS e.V. It is distributed to the general public for information purposes only and cannot be relied upon as a trading recommendation and does not constitute a solicitation to trade. The reported information is obtained from market sources. While every effort has been made to ensure the accuracy and the completeness of the NewConTex, VHSS e.V. makes no representations, conditions or warranties of any kind, express or implied, about the completeness, accuracy, reliability, or suitability of the NewConTex. Any reliance you place on the NewConTex is therefore strictly at your own risk. Neither VHSS e.V. nor any of its subsidiaries or affiliates nor any employee of the foregoing shall be liable or have any responsibility for any loss, liability or damage, cost or expense including without limitation, indirect or consequential loss or damage, or any loss or damage whatsoever arising from loss of data or profits arising out of, or in connection with, the use of and the reliance on the NewConTex, save for death or personal injury arising from VHSS e.V. negligence and fraudulent misrepresentation that cannot, under German law, be excluded.