



New ConTex Container Ship Time Charter Assessment Index

New ConTex*		319	
25.08.16		12 mos	24 mos
Gearless	1100 TEU	\$6.902	n.a.
	1700 TEU	\$6.996	
	2500 TEU	\$5.833	\$7.086
Gearless	2700 TEU	\$6.086	\$7.236
	3500 TEU	\$5.411	\$7.001
	4250 TEU	\$4.878	\$6.983

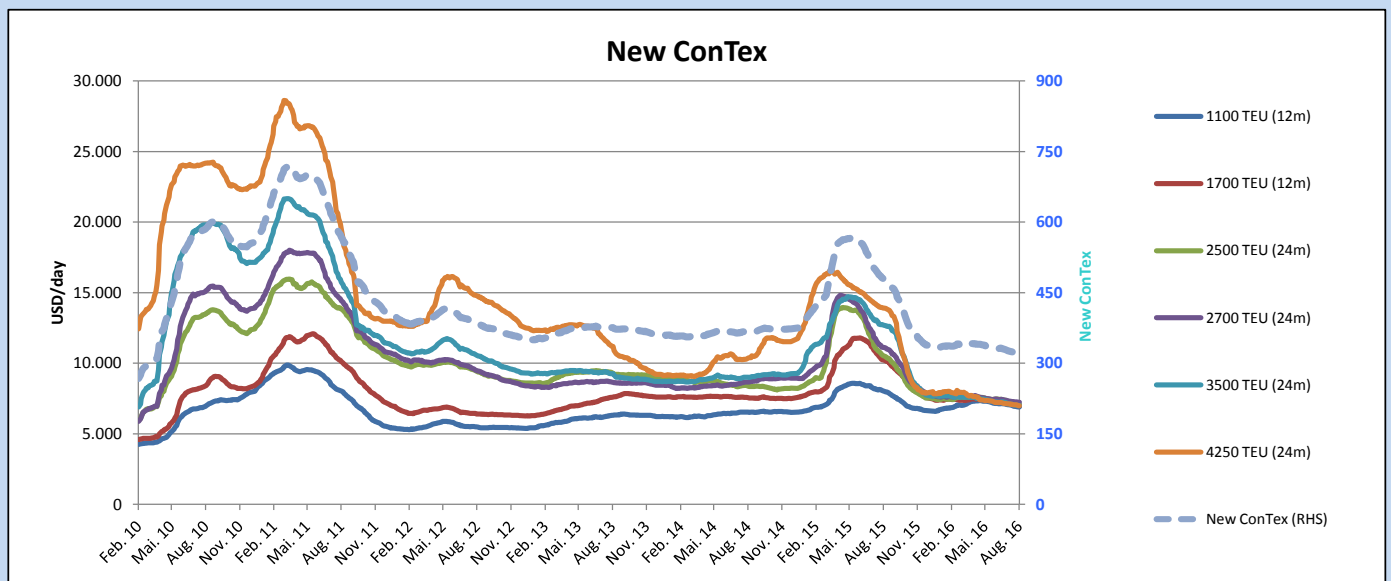
Legend		
↑	up	+ 2% or more
↔	steady up	from +1% to +1,9%
↔	steady	+/- 1%
↔	steady down	from -1% to -1,9%
↓	down	- 2% or less

*New ConTex evaluation is EXCLUDING
2500/2700/3500/4250 TEU groups for
12 months period

New ConTex-Commentary - issued:	25.08.16
<p>On a week-on-week basis the New ConTex lost another two points to a total result of 319 points now. The soft decrease with charter rates also continued its trend during the past week. Apart from a plus of USD 1,- (!) for the 12 mos evaluation of the 2700 TEU ships, all segments reading again negative prefixes.</p> <p>Worthwhile to be mentioned is the 12 mos evaluation for the 4250 TEU Panamax class with USD 4,878 is about USD 2,000 LESS Owners are able to achieve compared to an 1100 TEU ship. Remember one year ago, though not assembled with satisfying rates, at least we were seeing a healthy ratio between smaller and bigger tonnage yet.</p> <p>With the end of August also the end of the holiday season should come closer, however, even with the expectation that the chartering activity will be picking up shortly, due to the imbalanced supply-demand situation it is unlikely to see increasing charter hire levels in the near future.</p>	

New ConTex Development

Vessel type	Evaluated Period	Today 25.08.16	Week-on-Week		Month-on-Month			Year-on-Year					
			18.08.16	Change	Change	26.07.16	Change	Change	25.08.15	Change	Change		
New ConTex*		319	321	-2	↔	-0,6%	326	-7	-2,1%	480	-161	-33,5%	
New ConTex	1100 TEU	12 mos	\$6.902	\$6.924	-\$22	↔	-0,3%	\$7.067	-\$165	-2,3%	\$8.026	-1.124	-14,0%
	1700 TEU		\$6.996	\$7.027	-\$31	↔	-0,4%	\$7.155	-\$159	-2,2%	\$10.227	-3.231	-31,6%
	2500 TEU	24 mos	\$7.086	\$7.176	-\$90	↔	-1,3%	\$7.299	-\$213	-2,9%	\$10.533	-3.447	-32,7%
	2700 TEU		\$7.236	\$7.263	-\$27	↔	-0,4%	\$7.331	-\$95	-1,3%	\$11.110	-3.874	-34,9%
	3500 TEU		\$7.001	\$7.016	-\$15	↔	-0,2%	\$7.128	-\$127	-1,8%	\$12.708	-5.707	-44,9%
4250 TEU		\$6.983	\$7.049	-\$66	↔	-0,9%	\$7.133	-\$150	-2,1%	\$13.908	-6.925	-49,8%	
2500 TEU	12 mos	\$5.833	\$5.910	-\$77	↔	-1,3%	\$6.013	-\$180	-3,0%	\$9.348	-3.515	-37,6%	
2700 TEU		\$6.086	\$6.085	\$1	↔	0,0%	\$6.153	-\$67	-1,1%	\$9.904	-3.818	-38,6%	
3500 TEU		\$5.411	\$5.414	-\$3	↔	-0,1%	\$5.501	-\$90	-1,6%	\$11.706	-6.295	-53,8%	
4250 TEU		\$4.878	\$4.926	-\$48	↔	-1,0%	\$5.038	-\$160	-3,2%	\$12.718	-7.840	-61,6%	



Disclaimer

The brand NewConTex is copyrighted by Vereinigung Hamburger Schiffsmakler und Schiffsagenten e. V. ("VHSS e.V.") and is protected by law. The NewConTex may be published only with the source reference © VHSS e.V. It is distributed to the general public for information purposes only and cannot be relied upon as a trading recommendation and does not constitute a solicitation to trade. The reported information is obtained from market sources. While every effort has been made to ensure the accuracy and the completeness of the NewConTex, VHSS e.V. makes no representations, conditions or warranties of any kind, express or implied, about the completeness, accuracy, reliability, or suitability of the NewConTex. Any reliance you place on the NewConTex is therefore strictly at your own risk. Neither VHSS e.V. nor any of its subsidiaries or affiliates nor any employee of the foregoing shall be liable or have any responsibility for any loss, liability or damage, cost or expense including without limitation, indirect or consequential loss or damage, or any loss or damage whatsoever arising from loss of data or profits arising out of, or in connection with, the use of and the reliance on the NewConTex, save for death or personal injury arising from VHSS e.V. negligence and fraudulent misrepresentation that cannot, under German law, be excluded.