



New ConTex Container Ship Time Charter Assessment Index

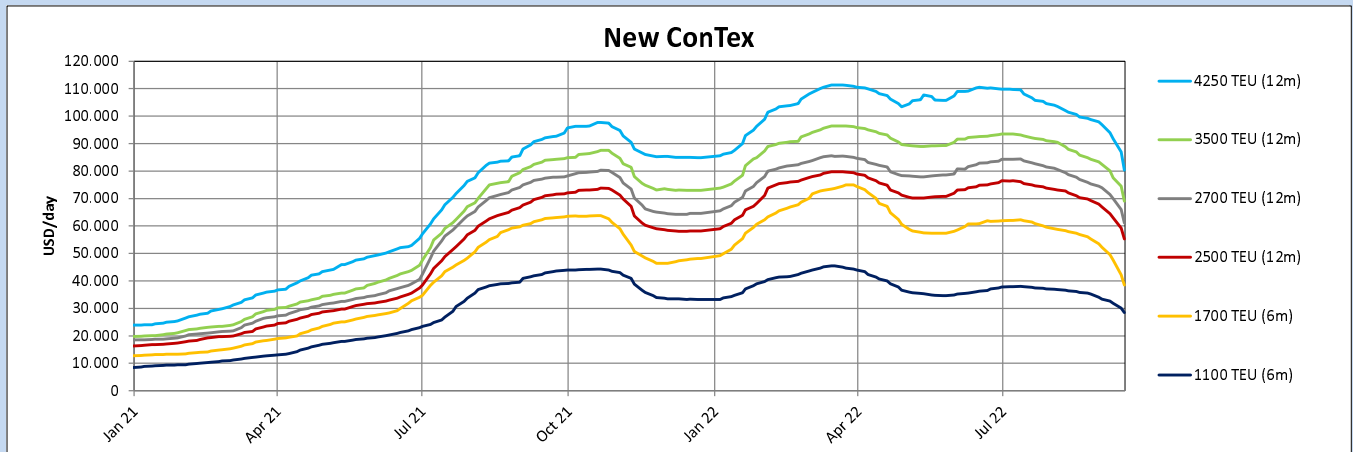
New ConTex*		2380	
15.09.22		6 mos	12 mos
Geared	1100 TEU	\$28.432	n.a.
	1700 TEU	\$38.523	
	2500 TEU		\$55.318
Gearless	2700 TEU	n.a.	\$61.045
	3500 TEU		\$69.055
	4250 TEU		\$80.350

Legend		
↑	up	+ 2% or more
↗	steady up	from +1% to +1,9%
→	steady	+/- 1 %
↘	steady down	from -1% to -1,9%
↓	down	- 2% or less

*New ConTex evaluation is EXCLUDING 1100/1700/5700/6500 TEU groups for 12 months period & 2500/2700/3500/4250 TEU groups for 24 months period

New ConTex-Commentary - issued:		15.09.22
<p>The overall sentiment is cooling down and hence the market is getting even quieter. Or is it getting more active because of decreasing time charter rates? Not really, at the moment we do not see any more activities amongst the operators in trying to make use of the present sentiment. With the SCFI on its further decline, it has just lost another 10 per cent week on week during the course of last week. Especially long-haul services are affected. The feeder market is shaken by one recent default of an operator and hence the small feeder market is under a little more pressure compared to the other segments. No wonder that the indices are reacting quite sharply, as mentioned the 1700 TEU is suffering the most at the moment with a decrease of 19,0 per cent week on week and closing at USD 38.523 basis 6 months period. Comparing the year on year figures, this segment has lost about 38,6%. But hey let's face it USD 38.523 basis 6 months period is still decent money. All other segments have been dropping this week alike and the overall New ConTex is closing at 2380 points, registering a decrease of 12,9 per cent week on week.</p>		

New ConTex Development											
Vessel type	Evaluated Period	Today	Week-on-Week		Month-on-Month			Year-on-Year			
		15.09.22	08.09.22	Change	Change	16.08.22	Change	Change	16.09.21	Change	Change
New ConTex*		2380	2733	-353	↓ -12,9%	3091	-711	↓ -23,0%	3146	-766	↓ -24,3%
1100 TEU	6 mos	\$28.432	\$31.895	-\$3.463	↓ -10,9%	\$36.127	-\$7.695	↓ -21,3%	\$42.883	-\$14.451	↓ -33,7%
	12 mos	\$25.823	\$28.555	-\$2.732	↓ -9,6%	\$32.077	-\$6.254	↓ -19,5%	\$36.000	-\$10.177	↓ -28,3%
1700 TEU	6 mos	\$38.523	\$47.550	-\$9.027	↓ -19,0%	\$57.382	-\$18.859	↓ -32,9%	\$62.754	-\$24.231	↓ -38,6%
	12 mos	\$35.145	\$43.159	-\$8.014	↓ -18,6%	\$51.945	-\$16.800	↓ -32,3%	\$48.217	-\$13.072	↓ -27,1%
2500 TEU	12 mos	\$55.318	\$62.986	-\$7.668	↓ -12,2%	\$71.045	-\$15.727	↓ -22,1%	\$70.959	-\$15.641	↓ -22,0%
	24 mos	\$40.309	\$46.464	-\$6.155	↓ -13,2%	\$52.091	-\$11.782	↓ -22,6%	\$44.432	-\$4.123	↓ -9,3%
2700 TEU	12 mos	\$61.045	\$69.941	-\$8.896	↓ -12,7%	\$77.814	-\$16.769	↓ -21,6%	\$77.445	-\$16.400	↓ -21,2%
	24 mos	\$44.186	\$50.873	-\$6.687	↓ -13,1%	\$56.405	-\$12.219	↓ -21,7%	\$47.536	-\$3.350	↓ -7,0%
3500 TEU	12 mos	\$69.055	\$77.550	-\$8.495	↓ -11,0%	\$86.985	-\$17.930	↓ -20,6%	\$83.890	-\$14.835	↓ -17,7%
	24 mos	\$51.770	\$59.550	-\$7.780	↓ -13,1%	\$65.010	-\$13.240	↓ -20,4%	\$52.694	-\$924	↓ -1,8%
4250 TEU	12 mos	\$80.350	\$91.770	-\$11.420	↓ -12,4%	\$100.580	-\$20.230	↓ -20,1%	\$92.160	-\$11.810	↓ -12,8%
	24 mos	\$58.610	\$67.720	-\$9.110	↓ -13,5%	\$75.500	-\$16.890	↓ -22,4%	\$63.465	-\$4.855	↓ -7,6%
5700 TEU	12 mos	\$96.444	\$110.567	-\$14.123	↓ -12,8%	\$118.806	-\$22.362	↓ -18,8%	\$103.067	-\$6.623	↓ -6,4%
6500 TEU	12 mos	\$103.289	\$116.972	-\$13.683	↓ -11,7%	\$124.778	-\$21.489	↓ -17,2%	\$110.428	-\$7.139	↓ -6,5%



Disclaimer

The brand NewConTex is copyrighted by Verband Hamburger und Bremer Schiffsmakler e.V. ("VHBS e.V.") and is protected by law. The NewConTex may be published only with the source reference © VHBS e.V. It is distributed to the general public for information purposes only and can not be relied upon as a trading recommendation and does not constitute a solicitation to trade. The reported information is obtained from market sources. While every effort has been made to ensure the accuracy and the completeness of the NewConTex, VHBS e.V. makes no representations, conditions or warranties of any kind, express or implied, about the completeness, accuracy, reliability, or suitability of the NewConTex. Any reliance you place on the NewConTex is therefore strictly at your own risk. Neither VHBS e.V. nor any of its subsidiaries or affiliates nor any employee of the foregoing shall be liable or have any responsibility for any loss, liability or damage, cost or expense including without limitation, indirect or consequential loss or damage, or any loss or damage whatsoever arising from loss of data or profits arising out of, or in connection with, the use of and the reliance on the NewConTex, save for death or personal injury arising from VHBS e.V. negligence and fraudulent misrepresentation that cannot, under German law, be excluded.