

# ICS2

## ENTRY SUMMARY DECLARATION: KEY REQUIREMENTS

### Who is responsible?

The **carrier or the filing party** is legally responsible for the accuracy and completeness of the Entry Summary Declaration (ENS).

Missing or incorrect information may result in delays and penalties.



### ICS2 filing rules



**RESPECT** the time limits set out in the legislation.



**PROVIDE** accurate and complete ENS data for each shipment at master, (lowest) house and goods item level.



**DECLARE** house consignment level data for each shipment and item, without consolidating into a single generic entry.

\*\*\*\*\*\_

**DECLARE** items with different Harmonised System (HS six-digit) codes separately in the house consignment declaration.



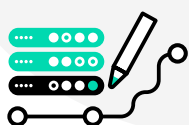
**DO NOT USE unacceptable goods descriptions**, including 'unknown' or 'not available'.



**DECLARE** the consignor and consignee as defined at the lowest house level; these must be different from the carrier, freight forwarder, (de)consolidator, postal operator or customs agent.



**RESPOND** promptly to customs requests for additional information or data amendments (referrals).



**SUBMIT** amendments only when relevant data has changed (not for formatting or cosmetic corrections).



**LODGE** arrival and presentation messages in accordance with guidance documents.



**CORRECT AND RE-SUBMIT ENS** messages returned with error codes.



**DO NOT USE** filing types F10, F13, F28 and F29 for e-commerce shipments.

# ICS2 data must be provided at the lowest house level

The first step is to identify the actor who holds the lowest house-level data in the supply chain. Once identified, this actor either shares the data with the carrier for a single ENS filing or submits it as an [ICS2 multiple filing](#). In the following two scenarios, Consolidator B (Scenario 1) and Shipper (Scenario 2) hold the lowest house-level data, and the ICS2 multiple filing process is used.

## Scenario 1

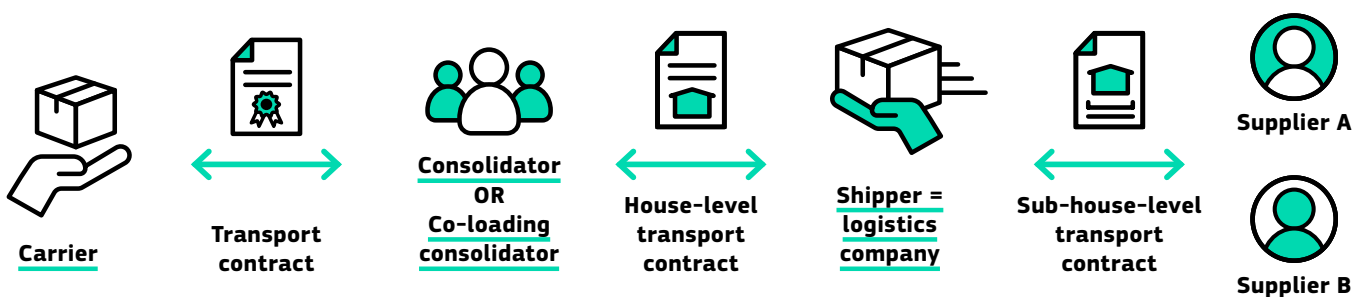


### Responsibilities

#### Consolidator A needs to:

- obtain all required ENS data from Consolidator B (the co-loading consolidator) at the level of the (lowest) house consignment;
- OR
- indicate the [Economic Operators Registration and Identification \(EORI\) number](#) of Consolidator B in its data filing, in which case Consolidator B is obliged to fill in all required data into ICS2 at the level of the (lowest) house consignment.

## Scenario 2



### Responsibilities

#### The shipper (acting as logistics company for multiple suppliers):

- files ICS2 data directly for all sub-house transport contracts (provided the shipper has an EORI number);
- OR
- shares all required ICS2 ENS data with the consolidator who will file the data.

