



New ConTex Container Ship Time Charter Assessment Index

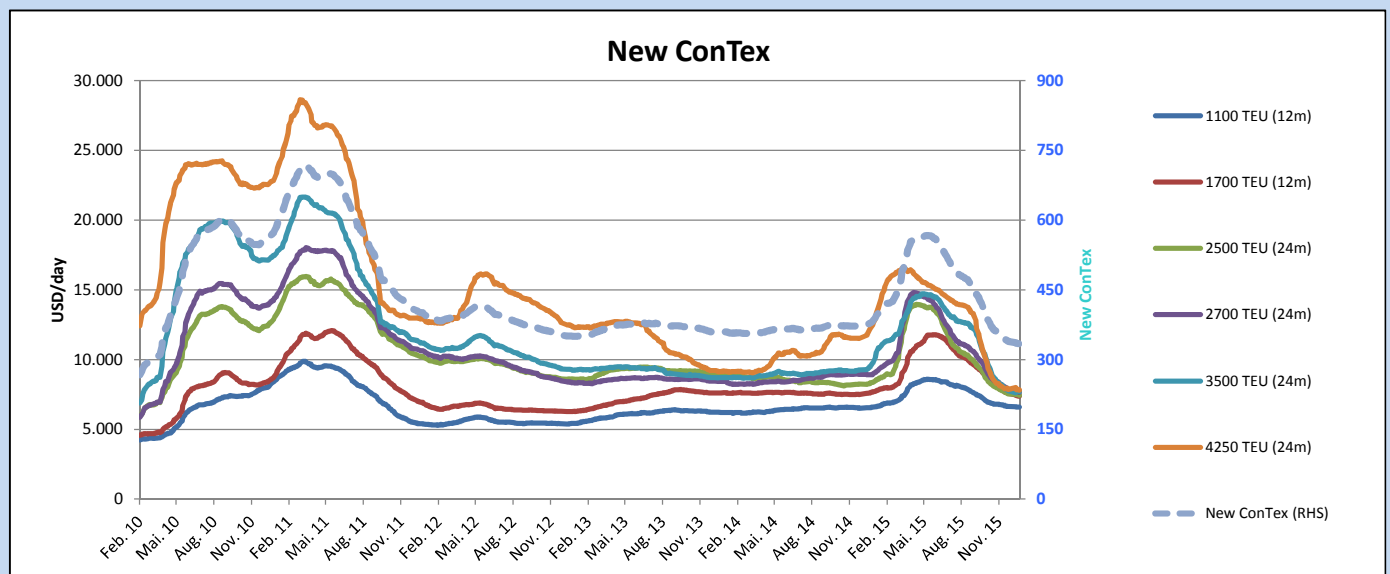
New ConTex*		333	
14.01.16		12 mos	24 mos
Gearless	1100 TEU	\$6.594	n.a.
	1700 TEU	\$7.367	
	2500 TEU	\$6.042	\$7.438
Gearless	2700 TEU	\$6.250	\$7.643
	3500 TEU	\$5.990	\$7.692
	4250 TEU	\$5.818	\$7.823

Legend		
↑	up	+ 2% or more
↗	steady up	from +1% to +1,9%
↔	steady	+/- 1 %
↘	steady down	from -1% to -1,9%
↓	down	- 2% or less

*New ConTex evaluation is EXCLUDING 2500/2700/3500/4250 TEU groups for 12 months period

New ConTex-Commentary - issued:	14.01.16
<p>With only 2 points down to 333 (and 6 points since the beginning of this year) the New ConTex moved, as predicted, quite steadily with rates seemed more or less bottomed out. Although rates so far still have not come up in the 1100 TEU segment the change compared to last week of just minus 0.2% e.g. USD 6,594 and the probably less idle tonnage available is considered a good sign.</p> <p>The 1700 TEU still keeping a slight downward trend with minus 0.9% to USD 7,367 for 12 months whereas the intermediate classes of 2500 TEU and 2700 TEU loosing further ground of minus 1.6% to USD 6,042 respectively minus 1.4% to USD 6,250 both for 12 months which being dictated by the number of idle vessels available in this segment.</p> <p>The 3500 TEU (up 0.3% to USD 5,990 for 12 months) and 4250 TEU (down 0,5% to USD 5.818 for 12 months) only moving down very slowly respectively sideways showing a certain market resistance.</p>	

New ConTex Development													
Vessel type	Evaluated Period	Today 14.01.16	Week-on-Week		Month-on-Month			Year-on-Year					
			07.01.16	Change	Change	15.12.15	Change	Change	13.01.15	Change	Change		
New ConTex*		333	335	-2	↔	-0,6%	341	-8	-2,3%	378	-45	-11,9%	
New ConTex	1100 TEU	12 mos	\$6.594	\$6.605	-\$11	↔	-0,2%	\$6.648	-\$54	-0,8%	\$6.557	37	0,6%
	1700 TEU		\$7.367	\$7.432	-\$65	↔	-0,9%	\$7.629	-\$262	-3,4%	\$7.603	-236	-3,1%
	2500 TEU	24 mos	\$7.438	\$7.496	-\$58	↔	-0,8%	\$7.607	-\$169	-2,2%	\$8.279	-841	-10,2%
	2700 TEU		\$7.643	\$7.713	-\$70	↔	-0,9%	\$7.941	-\$298	-3,8%	\$8.918	-1.275	-14,3%
	3500 TEU		\$7.692	\$7.731	-\$39	↔	-0,5%	\$7.871	-\$179	-2,3%	\$9.456	-1.764	-18,7%
4250 TEU		\$7.823	\$7.825	-\$2	↔	0,0%	\$7.949	-\$126	-1,6%	\$12.144	-4.321	-35,6%	
2500 TEU	12 mos	\$6.042	\$6.143	-\$101	↘	-1,6%	\$6.262	-\$220	-3,5%	\$7.085	-1.043	-14,7%	
2700 TEU		\$6.250	\$6.336	-\$86	↘	-1,4%	\$6.621	-\$371	-5,6%	\$8.022	-1.772	-22,1%	
3500 TEU		\$5.990	\$5.975	\$15	↔	0,3%	\$6.202	-\$212	-3,4%	\$8.369	-2.379	-28,4%	
4250 TEU		\$5.818	\$5.847	-\$29	↔	-0,5%	\$5.940	-\$122	-2,1%	\$10.493	-4.675	-44,6%	



Disclaimer

The brand NewConTex is copyrighted by Vereinigung Hamburger Schiffsmakler und Schiffsagenten e.V. ("VHSS e.V.") and is protected by law. The NewConTex may be published only with the source reference © VHSS e.V. It is distributed to the general public for information purposes only and cannot be relied upon as a trading recommendation and does not constitute a solicitation to trade. The reported information is obtained from market sources. While every effort has been made to ensure the accuracy and the completeness of the NewConTex, VHSS e.V. makes no representations, conditions or warranties of any kind, express or implied, about the completeness, accuracy, reliability, or suitability of the NewConTex. Any reliance you place on the NewConTex is therefore strictly at your own risk. Neither VHSS e.V. nor any of its subsidiaries or affiliates nor any employee of the foregoing shall be liable or have any responsibility for any loss, liability or damage, cost or expense including without limitation, indirect or consequential loss or damage, or any loss or damage whatsoever arising from loss of data or profits arising out of, or in connection with, the use of and the reliance on the NewConTex, save for death or personal injury arising from VHSS e.V. negligence and fraudulent misrepresentation that cannot, under German law, be excluded.