



New ConTex Container Ship Time Charter Assessment Index

New ConTex*		337	
18.02.16		12 mos	24 mos
Gearless	1100 TEU	\$6.808	n.a.
	1700 TEU	\$7.476	n.a.
	2500 TEU	\$6.037	\$7.435
Gearless	2700 TEU	\$6.279	\$7.639
	3500 TEU	\$5.920	\$7.690
	4250 TEU	\$5.958	\$8.012

Legend		
↑	up	+ 2% or more
↗	steady up	from +1% to +1,9%
→	steady	+/- 1 %
↘	steady down	from -1% to -1,9%
↓	down	- 2% or less

*New ConTex evaluation is EXCLUDING 2500/2700/3500/4250 TEU groups for 12 months period

New ConTex-Commentary - issued:	18.02.16
--	-----------------

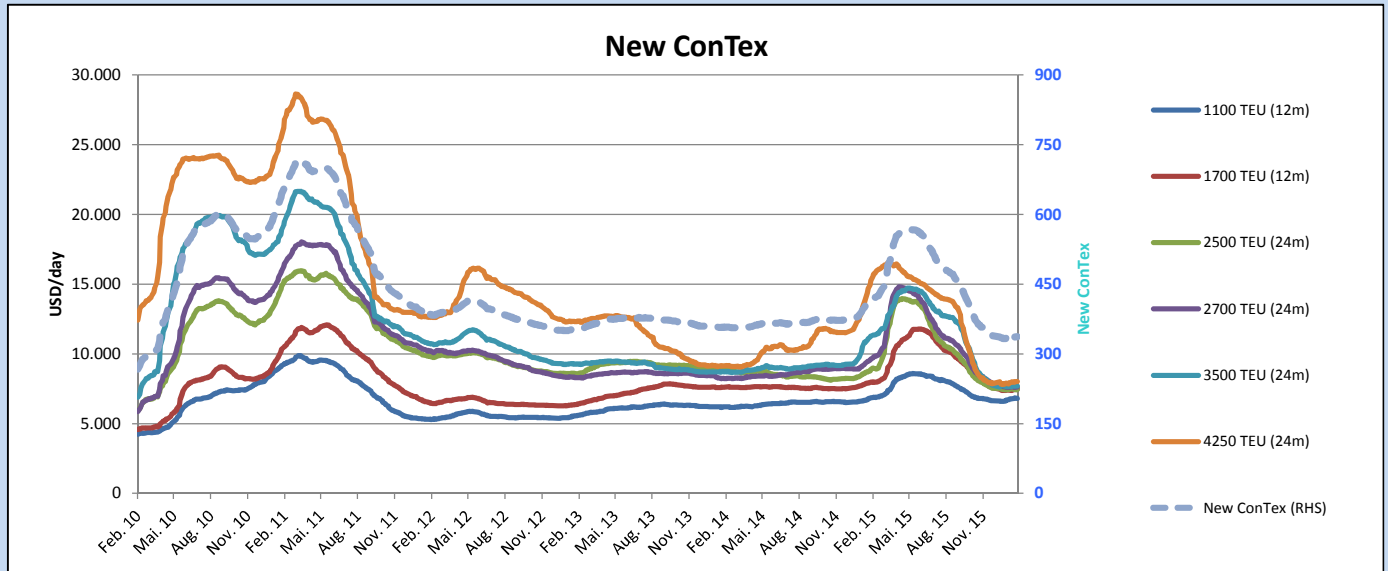
Another week has passed and the New ConTex reached 337, rising by one point compared to 11th Feb. Minor rate changes in the different size segments are reflecting the stagnating container market at the moment. It remains to be seen whether the end of the Chinese New Year might raise fixing activities. Presently the container lines perform numerous blank sailings, thereby increasing idle capacity.

W-o-W all evaluated segments keep their steady trend with TC hire changes limited to double-digits. The 1100 TEU segment dropped slightly by USD 10 (-0,1%) to USD 6.808 which appears to be rather a statistical change. The evaluation basis 12 months in the other segments below 3500 TEU are showing slightly positive (1700 and 2700 TEU segment) resp. negative (2500 TEU) developments.

The 3500 TEU segment faced the biggest decline W-o-W with USD 42 (-0,7%) down to USD 5.920 basis 12 months. According to Alphaliner idle numbers in this segment are rising and fixtures with very flexible periods and rates below USD 6.000 are common once again.

At the same time the 4.250 TEU segment increased by USD 25 (+0,4%) basis 12 months to USD 5.958, retaining it's minor upward development since beginning of this year.

Vessel type		Evaluated Period	New ConTex Development									
			Today 18.02.16	Week-on-Week		Month-on-Month		Year-on-Year				
			11.02.16	Change	Change	19.01.16	Change	Change	17.02.15	Change	Change	
New ConTex*			337	336	1	→ 0,3%	333	4	1,2%	414	-77	-18,6%
New ConTex	1100 TEU	12 mos	\$6.808	\$6.818	-\$10	→ -0,1%	\$6.620	\$188	2,8%	\$6.828	-20	-0,3%
	1700 TEU		\$7.476	\$7.444	\$32	→ 0,4%	\$7.383	\$93	1,3%	\$7.940	-464	-5,8%
	2500 TEU	24 mos	\$7.435	\$7.460	-\$25	→ -0,3%	\$7.428	\$7	0,1%	\$8.788	-1.353	-15,4%
	2700 TEU		\$7.639	\$7.607	\$32	→ 0,4%	\$7.632	\$7	0,1%	\$9.560	-1.921	-20,1%
	3500 TEU		\$7.690	\$7.691	-\$1	→ 0,0%	\$7.671	\$19	0,2%	\$11.216	-3.526	-31,4%
4250 TEU	\$8.012	\$7.995	\$17	→ 0,2%	\$7.862	\$150	1,9%	\$14.962	-6.950	-46,5%		
	2500 TEU	12 mos	\$6.037	\$6.061	-\$24	→ -0,4%	\$6.030	\$7	0,1%	\$7.582	-1.545	-20,4%
	2700 TEU		\$6.279	\$6.263	\$16	→ 0,3%	\$6.242	\$37	0,6%	\$8.319	-2.040	-24,5%
	3500 TEU		\$5.920	\$5.962	-\$42	→ -0,7%	\$5.961	-\$41	-0,7%	\$10.010	-4.090	-40,9%
	4250 TEU		\$5.958	\$5.933	\$25	→ 0,4%	\$5.843	\$115	2,0%	\$13.237	-7.279	-55,0%



Disclaimer

The brand NewConTex is copyrighted by Vereinigung Hamburger Schiffsmakler und Schiffsagenten e.V. ("VHSS e.V.") and is protected by law. The NewConTex may be published only with the source reference © VHSS e.V. It is distributed to the general public for information purposes only and cannot be relied upon as a trading recommendation and does not constitute a solicitation to trade. The reported information is obtained from market sources. While every effort has been made to ensure the accuracy and the completeness of the NewConTex, VHSS e.V. makes no representations, conditions or warranties of any kind, express or implied, about the completeness, accuracy, reliability, or suitability of the NewConTex. Any reliance you place on the NewConTex is therefore strictly at your own risk. Neither VHSS e.V. nor any of its subsidiaries or affiliates nor any employee of the foregoing shall be liable or have any responsibility for any loss, liability or damage, cost or expense including without limitation, indirect or consequential loss or damage, or any loss or damage whatsoever arising from loss of data or profits arising out of, or in connection with, the use of and the reliance on the NewConTex, save for death or personal injury arising from VHSS e.V. negligence and fraudulent misrepresentation that cannot, under German law, be excluded.