



New ConTex Container Ship Time Charter Assessment Index

New ConTex*		342	
28.04.16		12 mos	24 mos
Geared	1100 TEU	\$7.339	n.a.
	1700 TEU	\$7.497	
	2500 TEU	\$6.113	\$7.614
Gearless	2700 TEU	\$6.171	\$7.708
	3500 TEU	\$5.787	\$7.563
	4250 TEU	\$5.333	\$7.640

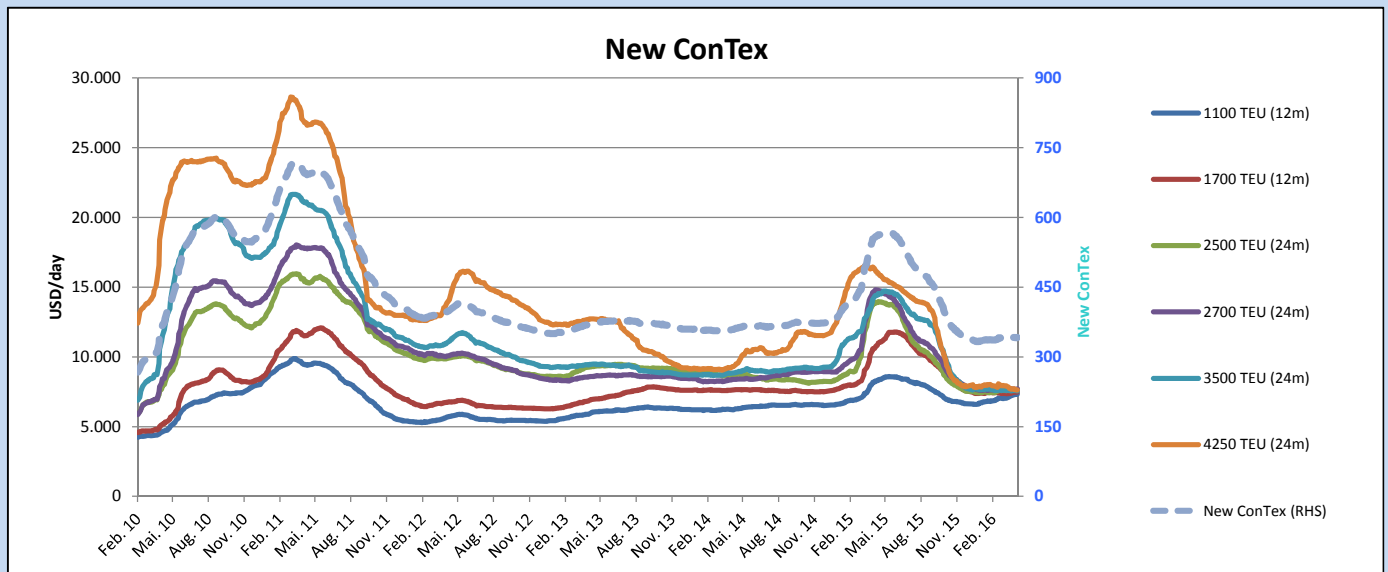
Legend		
↑	up	+ 2% or more
↗	steady up	from +1% to +1,9%
→	steady	+/- 1 %
↘	steady down	from -1% to -1,9%
↓	down	- 2% or less

*New ConTex evaluation is EXCLUDING 2500/2700/3500/4250 TEU groups for 12 months period

New ConTex-Commentary - issued: 28.04.16

Also in the present week 17 there seems no real movement with the New ConTex to remain at 342 points. The 4250 TEU class being still under severe pressure with a rising amount of vessels without employment especially in Asia. One fixture meantime reported at less than the latest New ConTex Figure of \$5.333 based on a flexible period of 2-12 month. The 1700/2500/2700 TEU segments are clearly going sideways. Rates are being 'stable' or static and being only influenced on the different variable periods fixed. It might however be noted that it looks as if the vessels in these as well as smaller segments getting short in Europe with a result that for instance the 1700 TEU class is achieving premiums up to around 1000/1500 USD depending on specification/position compared to Asian fixtures. Unfortunately this development is still not following the 2500/2700 TEU sizes although also here the number of open vessels compared to Asia is reducing and it remains to be seen if this can have any effect with an eventual increase in the rates during the coming weeks.

		New ConTex Development										
Vessel type	Evaluated Period	Today	Week-on-Week		Month-on-Month			Year-on-Year				
		28.04.16	21.04.16	Change	Change	29.03.16	Change	Change	28.04.15	Change	Change	
New ConTex*		342	342	0	→	0,0%	339	3	0,9%	557	-215	-38,6%
New ConTex	1100 TEU	\$7.339	\$7.303	\$36	→	0,5%	\$7.029	\$310	4,4%	\$8.198	-859	-10,5%
	1700 TEU	\$7.497	\$7.487	\$10	→	0,1%	\$7.386	\$111	1,5%	\$10.603	-3.106	-29,3%
	2500 TEU	\$7.614	\$7.614	\$0	→	0,0%	\$7.587	\$27	0,4%	\$13.830	-6.216	-44,9%
	2700 TEU	\$7.708	\$7.672	\$36	→	0,5%	\$7.733	-\$25	-0,3%	\$14.752	-7.044	-47,7%
	3500 TEU	\$7.563	\$7.579	-\$16	→	-0,2%	\$7.603	-\$40	-0,5%	\$14.336	-6.773	-47,2%
	4250 TEU	\$7.640	\$7.655	-\$15	→	-0,2%	\$7.933	-\$293	-3,7%	\$16.297	-8.657	-53,1%
	2500 TEU	\$6.113	\$6.094	\$19	→	0,3%	\$6.023	\$90	1,5%	\$12.189	-6.076	-49,8%
	2700 TEU	\$6.171	\$6.145	\$26	→	0,4%	\$6.201	-\$30	-0,5%	\$13.498	-7.327	-54,3%
	3500 TEU	\$5.787	\$5.771	\$16	→	0,3%	\$5.783	\$4	0,1%	\$12.840	-7.053	-54,9%
	4250 TEU	\$5.333	\$5.341	-\$8	→	-0,1%	\$5.704	-\$371	-6,5%	\$14.637	-9.304	-63,6%



Disclaimer

The brand NewConTex is copyrighted by Vereinigung Hamburger Schiffsmakler und Schiffsagenten e.V. ("VHSS e.V.") and is protected by law. The NewConTex may be published only with the source reference © VHSS e.V. It is distributed to the general public for information purposes only and cannot be relied upon as a trading recommendation and does not constitute a solicitation to trade. The reported information is obtained from market sources. While every effort has been made to ensure the accuracy and the completeness of the NewConTex, VHSS e.V. makes no representations, conditions or warranties of any kind, express or implied, about the completeness, accuracy, reliability, or suitability of the NewConTex. Any reliance you place on the NewConTex is therefore strictly at your own risk. Neither VHSS e.V. nor any of its subsidiaries or affiliates nor any employee of the foregoing shall be liable or have any responsibility for any loss, liability or damage, cost or expense including without limitation, indirect or consequential loss or damage, or any loss or damage whatsoever arising from loss of data or profits arising out of, or in connection with, the use of and the reliance on the NewConTex, save for death or personal injury arising from VHSS e.V. negligence and fraudulent misrepresentation that cannot, under German law, be excluded.