



New ConTex Container Ship Time Charter Assessment Index

New ConTex*		339	
24.03.16		12 mos	24 mos
Gearless	1100 TEU	\$7.023	n.a.
	1700 TEU	\$7.376	
	2500 TEU	\$6.034	
Gearless	2700 TEU	\$5.787	\$7.602
	3500 TEU	\$5.787	\$7.604
	4250 TEU	\$5.743	\$7.921

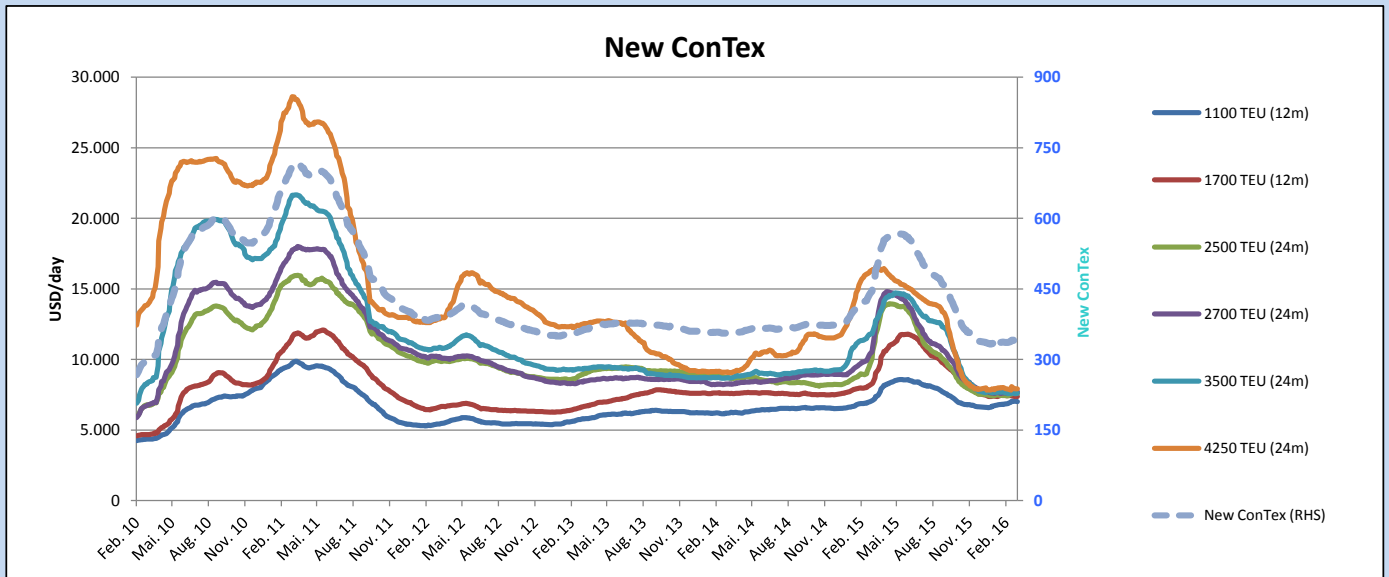
Legend		
↑	up	+ 2% or more
↗	steady up	from +1% to +1,9%
→	steady	+/- 1 %
↘	steady down	from -1% to -1,9%
↓	down	- 2% or less

*New ConTex evaluation is EXCLUDING 2500/2700/3500/4250 TEU groups for 12 months period

New ConTex-Commentary - issued:		24.03.16
<p>(24.3.16) Despite a positive sign at the beginning of this week we have to keep in mind that the market is still at its lowest with unfortunately no signs of improvement. Consequently the New ConTex moved sideways, again.</p> <p>For the 12 months period evaluation almost all figures decreased: 1,100 TEU (- USD 9), 1,700 TEU (-USD 8), 2,700 TEU (-27), 3500 TEU (-USD 7) and 4,250 TEU (-USD 42). The only exception was the 2,500 TEU class (+USD 20).</p> <p>On a more positive note the 24 months-period index has increased in classes 2,500 TEU (+1USD) and 3.500 TEU (+USD29).</p>		

New ConTex Development

Vessel type	Evaluated Period	Today	Week-on-Week		Month-on-Month			Year-on-Year				
		24.03.16	17.03.16	Change	Change	23.02.16	Change	Change	24.03.15	Change	Change	
New ConTex*		339	339	0	→	0,0%	336	3	0,9%	445	-106	-23,8%
New ConTex	1100 TEU	\$7.023	\$7.032	-\$9	→	-0,1%	\$6.844	\$179	2,6%	\$7.071	-48	-0,7%
	1700 TEU	\$7.376	\$7.384	-\$8	→	-0,1%	\$7.455	-\$79	-1,1%	\$8.275	-899	-10,9%
	2500 TEU	\$7.602	\$7.588	\$14	→	0,2%	\$7.439	\$163	2,2%	\$10.040	-2.438	-24,3%
	2700 TEU	\$7.718	\$7.747	-\$29	→	-0,4%	\$7.629	\$89	1,2%	\$10.526	-2.808	-26,7%
	3500 TEU	\$7.604	\$7.575	\$29	→	0,4%	\$7.648	-\$44	-0,6%	\$11.823	-4.219	-35,7%
	4250 TEU	\$7.921	\$7.930	-\$9	→	-0,1%	\$7.934	-\$13	-0,2%	\$16.319	-8.398	-51,5%
New ConTex	2500 TEU	\$6.034	\$6.014	\$20	→	0,3%	\$6.026	\$8	0,1%	\$8.724	-2.690	-30,8%
	2700 TEU	\$5.787	\$6.259	-\$472	↓	-7,5%	\$6.260	-\$473	-7,6%	\$9.209	-3.422	-37,2%
	3500 TEU	\$5.787	\$5.794	-\$7	→	-0,1%	\$5.870	-\$83	-1,4%	\$10.499	-4.712	-44,9%
	4250 TEU	\$5.743	\$5.785	-\$42	→	-0,7%	\$5.948	-\$205	-3,4%	\$14.691	-8.948	-60,9%



Disclaimer

The brand NewConTex is copyrighted by Vereinigung Hamburger Schiffsmakler und Schiffsagenten e. V. ("VHSS e.V.") and is protected by law. The NewConTex may be published only with the source reference © VHSS e.V. It is distributed to the general public for information purposes only and cannot be relied upon as a trading recommendation and does not constitute a solicitation to trade. The reported information is obtained from market sources. While every effort has been made to ensure the accuracy and the completeness of the NewConTex, VHSS e.V. makes no representations, conditions or warranties of any kind, express or implied, about the completeness, accuracy, reliability, or suitability of the NewConTex. Any reliance you place on the NewConTex is therefore strictly at your own risk. Neither VHSS e.V. nor any of its subsidiaries or affiliates nor any employee of the foregoing shall be liable or have any responsibility for any loss, liability or damage, cost or expense including without limitation, indirect or consequential loss or damage, or any loss or damage whatsoever arising from loss of data or profits arising out of, or in connection with, the use of and the reliance on the NewConTex, save for death or personal injury arising from VHSS e.V. negligence and fraudulent misrepresentation that cannot, under German law, be excluded.