

8 TURKISH STRAITS ANCHORAGE AREAS

The coordinates of the anchorage areas are based on the WGS 84 datum. If these anchorage areas have coastal contact, vessels are prohibited from anchoring within 2.5 cables from the shore.

8.1 Istanbul Strait Anchorage Areas

8.1.1 Anchorage Areas at the Northern Entrance of Istanbul Strait

The anchorage areas at the northern entrance of the Istanbul Strait are as shown in Figure 4.

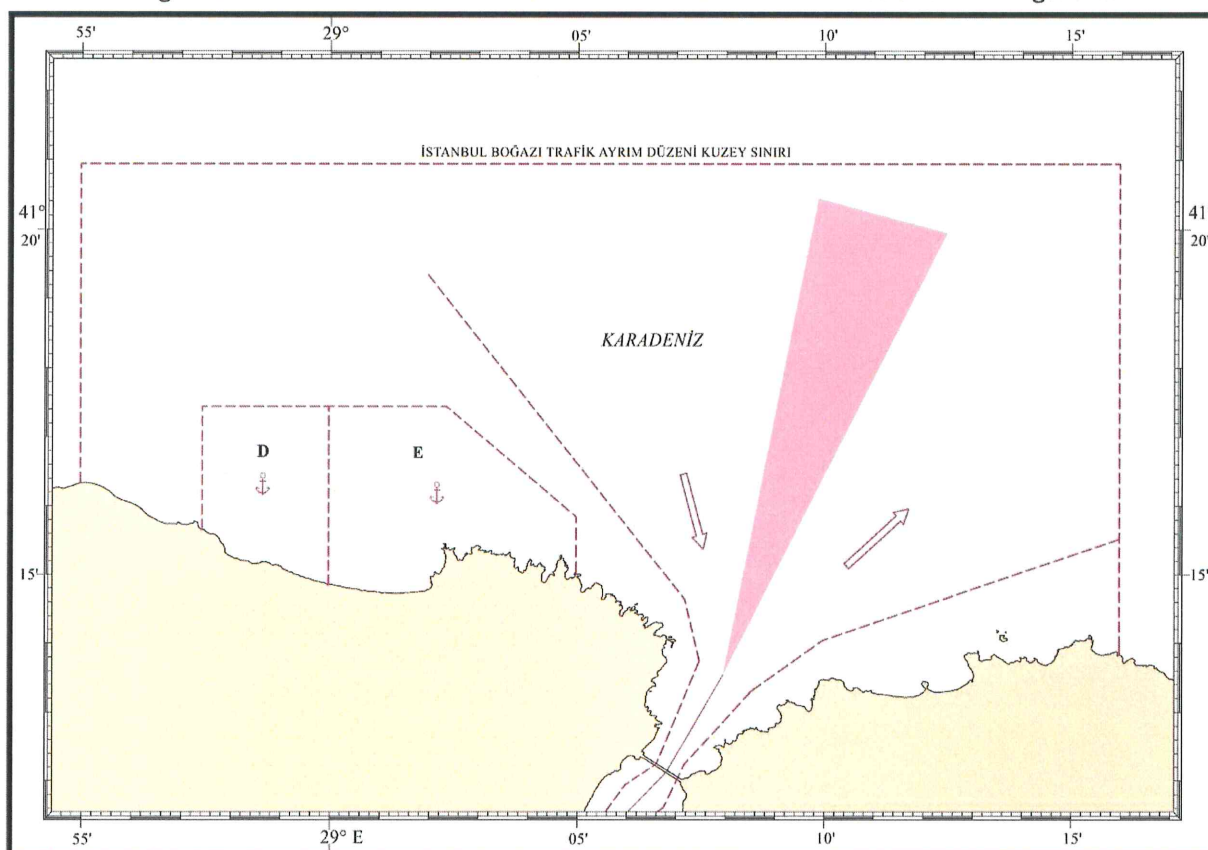


Figure 4: Anchorage Areas at the North Entrance of Istanbul Strait

D- The anchorage place at the Northern Entrance of the Istanbul Strait for vessels carrying dangerous cargoes, Nuclear powered military vessels and vessels which will effect gas freeing operations is the sea area covered by the following coordinates.

- (1) 41° 15'.600 N, 28° 57'.423 E (Shore)
- (2) 41° 17'.443 N, 28° 57'.423 E
- (3) 41° 17'.443 N, 28° 59'.974 E
- (4) 41° 14'.853 N, 28° 59'.974 E (Shore)

E- The anchorage area at the Northern Entrance of Istanbul Strait for vessels carrying non dangerous cargoes is the sea area covered by the following coordinates. In case of emergencies, bunkering and supply operations can be carried out in this area with the permission of the Harbour Master, the Turkish Straits Vessel Traffic Services Center and other institutions/organizations.

- (1) 41° 14'.853 N, 28° 59'.974 E (Shore)
- (2) 41° 17'.443 N, 28° 59'.974 E
- (3) 41° 17'.443 N, 29° 02'.343 E
- (4) 41° 15'.843 N, 29° 04'.974 E
- (5) 41° 15'.004 N, 29° 04'.974 E (Shore)

8.1.2 Anchorage Areas at the Southern Entrance of Istanbul Strait

The anchorage areas at the southern entrance of the Istanbul Strait are as shown in Figure 5.

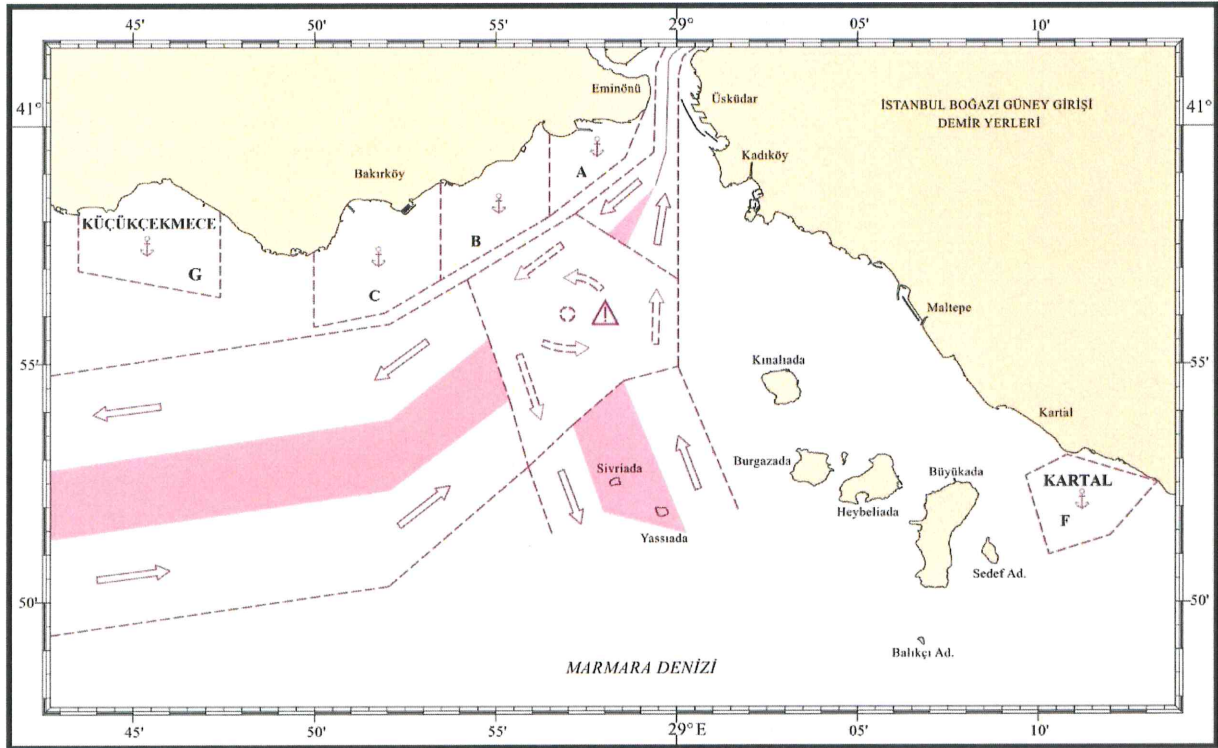


Figure 5: Anchorage Areas at the South Entrance of Istanbul Strait

A- Ahirkapı anchorage area A for vessels which will berth at coastal facilities, is the sea area covered by following coordinates. Anchoring and heaving up anchor within this area is subject to pilotage.

- (1) 41° 00'.360 N, 28° 59'.134 E (Shore)
- (2) 40° 59'.333 N, 28° 58'.574 E
- (3) 40° 58'.093 N, 28° 56'.474 E
- (4) 40° 59'.840 N, 28° 56'.474 E (Shore)

B- Ahirkapı anchorage area B for vessels coastal facilities and intending to stay in anchor for a short time is the sea area covered by the following coordinates.

- (1) 40° 59'.840 N, 28° 56'.474 E (Shore)
- (2) 40° 58'.093 N, 28° 56'.474 E
- (3) 40° 56'.763 N, 28° 53'.474 E
- (4) 40° 58'.801 N, 28° 53'.474 E (Shore)

C- Ahirkapı anchorage area C for vessels carrying dangerous cargoes, nuclear powered military ships and vessels which will carry out gas freeing operations and coastal facilities is the area covered by the following coordinates.

- (1) 40° 58'.801 N, 28° 53'.474 E (Shore)
- (2) 40° 56'.763 N, 28° 53'.474 E
- (3) 40° 56'.063 N, 28° 51'.924 E
- (4) 40° 55'.773 N, 28° 49'.974 E
- (5) 40° 57'.354 N, 28° 49'.974 E (Shore)

G- Kckcekmece anchorage area; is the sea area covered by the following coordinates and can also be used as a long time stay anchorage area and quarantine anchorage area when needed.

- (1) 40° 58'.197 N, 28° 47'.400 E (Shore)
- (2) 40° 56'.400 N, 28° 47'.400 E
- (3) 40° 56'.950 N, 28° 43'.500 E
- (4) 40° 58'.139 N, 28° 43'.500 E (Shore)

F- Kartal Anchorage Area, is the sea area covered by the following coordinates and it is anchorage place for the vessels not carrying dangerous cargo which will pass through Istanbul Strait. (Tuzla Harbour Master Anchorage Area no. 3)

- (1) 40° 52'.650 N, 29° 09'.650 E
- (2) 40° 53'.083 N, 29° 10'.800 E
- (3) 40° 52'.517 N, 29° 13'.300 E
- (4) 40° 51'.400 N, 29° 12'.000 E
- (5) 40° 51'.000 N, 29° 10'.300 E