



## New ConTex Container Ship Time Charter Assessment Index

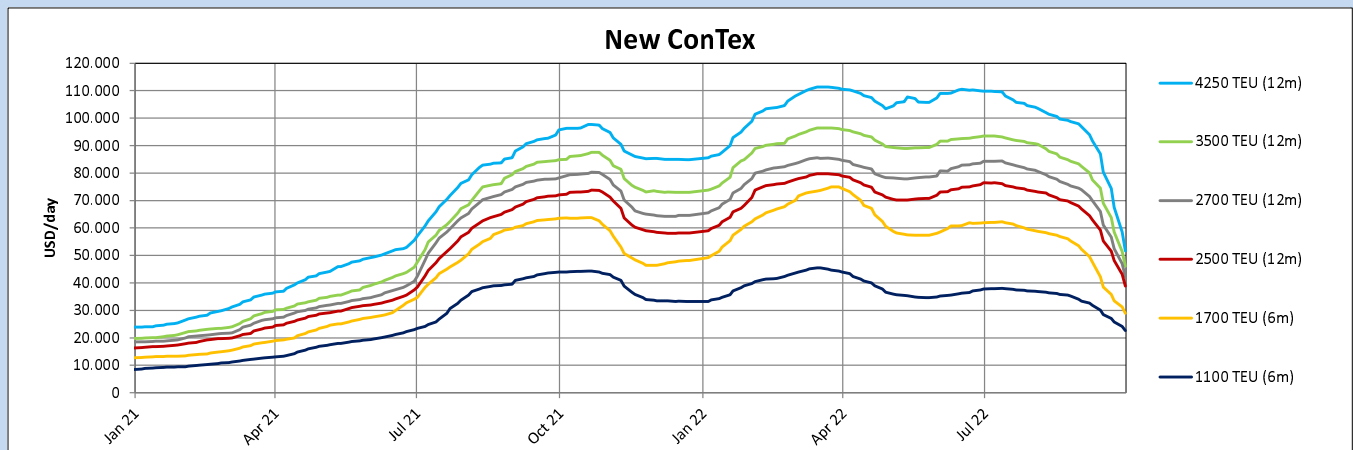
| New ConTex* |          | 1671     |          |
|-------------|----------|----------|----------|
| 29.09.22    |          | 6 mos    | 12 mos   |
| Geared      | 1100 TEU | \$22.609 | n.a.     |
|             | 1700 TEU | \$28.891 |          |
|             | 2500 TEU |          |          |
| Gearless    | 2700 TEU | n.a.     | \$42.200 |
|             | 3500 TEU |          | \$46.055 |
|             | 4250 TEU |          | \$51.700 |

| Legend |             |                   |
|--------|-------------|-------------------|
| ↑      | up          | + 2% or more      |
| ↗      | steady up   | from +1% to +1,9% |
| →      | steady      | +/- 1 %           |
| ↘      | steady down | from -1% to -1,9% |
| ↓      | down        | - 2% or less      |

\*New ConTex evaluation is EXCLUDING 1100/1700/5700/6500 TEU groups for 12 months period & 2500/2700/3500/4250 TEU groups for 24 months period

| New ConTex-Commentary - issued:  |  | 29.09.22 |
|--|--|----------|
| <p>The temperature is dropping fast, not only in Northern Europe but also in the Container Chartering market and consequently the New ConTex Indices are all bathed in red. Well, not surprisingly...it is basically negativity all around. The Container Chartering Market sees very, very little activity with only a few fixtures to report with rates continuing their fall. Growing positions lists, an increasing number of spot vessels and Golden Week upon us suggest that this trend is likely to continue. As decreasing cargo volumes even force Liner Companies to close down services, and more strike activity is expected in the UK, relief is simply not in sight. This being said, on a historical level, Charter rates are still very high, however it is the speed that has changed the markets tone that is baffling people. The market dropped almost 50% year-on-year! Given the events that have actually forced these developments, one should probably not be surprised, yet it is still hard to fathom. The good news.....It is Friday! Stay healthy everyone and before you fall too much into self pity due to the foregoing words, remember there are many people with much, much more severe problems at the moment than historically still high Charter Rates.</p> |  |          |

| New ConTex Development |                  |          |              |           |          |                |           |          |              |           |          |
|------------------------|------------------|----------|--------------|-----------|----------|----------------|-----------|----------|--------------|-----------|----------|
| Vessel type            | Evaluated Period | Today    | Week-on-Week |           |          | Month-on-Month |           |          | Year-on-Year |           |          |
|                        |                  | 29.09.22 | 22.09.22     | Change    | Change   | 30.08.22       | Change    | Change   | 30.09.21     | Change    | Change   |
| New ConTex*            |                  | 1671     | 2055         | -384      | ↓ -18,7% | 2950           | -1.279    | ↓ -43,4% | 3204         | -1.533    | ↓ -47,8% |
| 1100 TEU               | 6 mos            | \$22.609 | \$25.795     | -\$3.186  | ↓ -12,4% | \$34.071       | -\$11.462 | ↓ -33,6% | \$43.925     | -\$21.316 | ↓ -48,5% |
|                        | 12 mos           | \$20.477 | \$23.314     | -\$2.837  | ↓ -12,2% | \$30.421       | -\$9.944  | ↓ -32,7% | \$36.679     | -\$16.202 | ↓ -44,2% |
| 1700 TEU               | 6 mos            | \$28.891 | \$33.500     | -\$4.609  | ↓ -13,8% | \$53.546       | -\$24.655 | ↓ -46,0% | \$63.538     | -\$34.647 | ↓ -54,5% |
|                        | 12 mos           | \$25.995 | \$30.582     | -\$4.587  | ↓ -15,0% | \$48.550       | -\$22.555 | ↓ -46,5% | \$49.038     | -\$23.043 | ↓ -47,0% |
| 2500 TEU               | 12 mos           | \$38.836 | \$48.150     | -\$9.314  | ↓ -19,3% | \$67.968       | -\$29.132 | ↓ -42,9% | \$72.082     | -\$33.246 | ↓ -46,1% |
|                        | 24 mos           | \$28.695 | \$34.705     | -\$6.010  | ↓ -17,3% | \$49.905       | -\$21.210 | ↓ -42,5% | \$45.259     | -\$16.564 | ↓ -36,6% |
| 2700 TEU               | 12 mos           | \$42.200 | \$52.436     | -\$10.236 | ↓ -19,5% | \$74.505       | -\$32.305 | ↓ -43,4% | \$78.245     | -\$36.045 | ↓ -46,1% |
|                        | 24 mos           | \$31.664 | \$37.982     | -\$6.318  | ↓ -16,6% | \$54.759       | -\$23.095 | ↓ -42,2% | \$48.405     | -\$16.741 | ↓ -34,6% |
| 3500 TEU               | 12 mos           | \$46.055 | \$58.500     | -\$12.445 | ↓ -21,3% | \$83.350       | -\$37.295 | ↓ -44,7% | \$84.915     | -\$38.860 | ↓ -45,8% |
|                        | 24 mos           | \$35.750 | \$43.600     | -\$7.850  | ↓ -18,0% | \$63.485       | -\$27.735 | ↓ -43,7% | \$53.625     | -\$17.875 | ↓ -33,3% |
| 4250 TEU               | 12 mos           | \$51.700 | \$67.560     | -\$15.860 | ↓ -23,5% | \$97.953       | -\$46.253 | ↓ -47,2% | \$95.725     | -\$44.025 | ↓ -46,0% |
|                        | 24 mos           | \$40.450 | \$50.300     | -\$9.850  | ↓ -19,6% | \$71.729       | -\$31.279 | ↓ -43,6% | \$64.430     | -\$23.980 | ↓ -37,2% |
| 5700 TEU               | 12 mos           | \$68.111 | \$84.833     | -\$16.722 | ↓ -19,7% | \$116.601      | -\$48.490 | ↓ -41,6% | \$105.989    | -\$37.878 | ↓ -35,7% |
| 6500 TEU               | 12 mos           | \$75.511 | \$91.561     | -\$16.050 | ↓ -17,5% | \$122.714      | -\$47.203 | ↓ -38,5% | \$113.450    | -\$37.939 | ↓ -33,4% |



#### Disclaimer

The brand NewConTex is copyrighted by Verband Hamburger und Bremer Schiffsmakler e.V. ("VHBS e.V.") and is protected by law. The NewConTex may be published only with the source reference © VHBS e.V. It is distributed to the general public for information purposes only and cannot be relied upon as a trading recommendation and does not constitute a solicitation to trade. The reported information is obtained from market sources. While every effort has been made to ensure the accuracy and the completeness of the NewConTex, VHBS e.V. makes no representations, conditions or warranties of any kind, express or implied, about the completeness, accuracy, reliability, or suitability of the NewConTex. Any reliance you place on the NewConTex is therefore strictly at your own risk. Neither VHBS e.V. nor any of its subsidiaries or affiliates nor any employee of the foregoing shall be liable or have any responsibility for any loss, liability or damage, cost or expense including without limitation, indirect or consequential loss or damage, or any loss or damage whatsoever arising from loss of data or profits arising out of, or in connection with, the use of and the reliance on the NewConTex, save for death or personal injury arising from VHBS e.V. negligence and fraudulent misrepresentation that cannot, under German law, be excluded.