



New ConTex Container Ship Time Charter Assessment Index

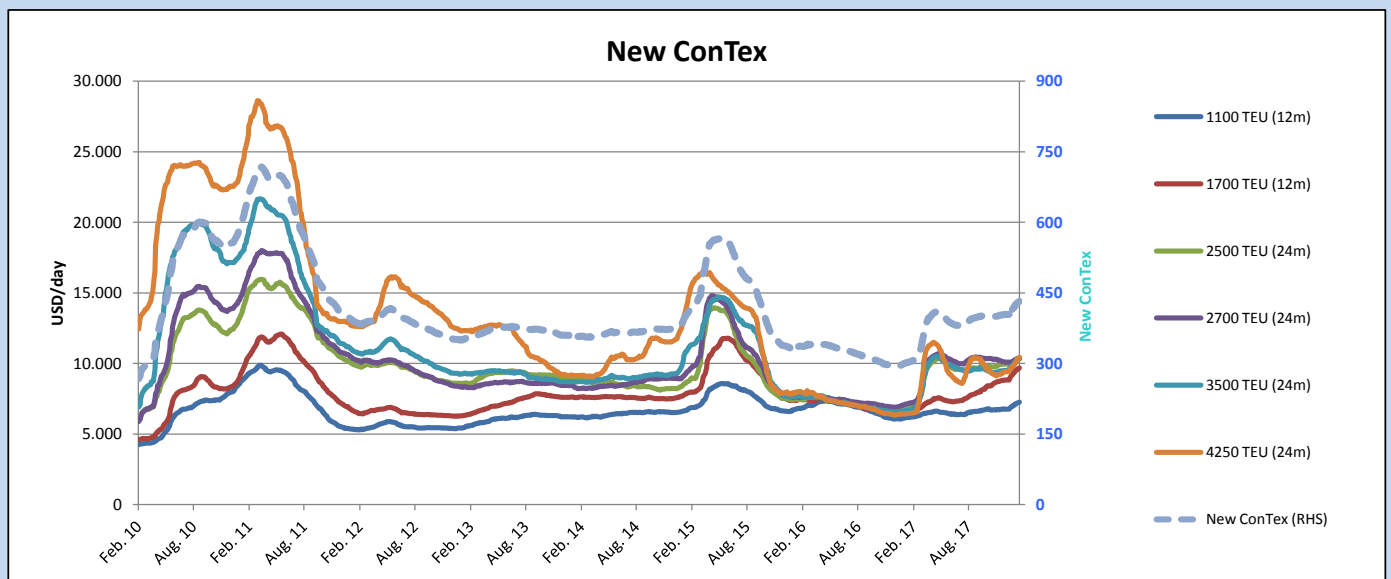
New ConTex*		432
08.02.18		
Gearless	12 mos	24 mos
	1100 TEU	\$7.258
	1700 TEU	\$9.687
Gearless	2500 TEU	\$9.390
	2700 TEU	\$9.385
	3500 TEU	\$9.244
	4250 TEU	\$8.945

Legend		
↑	up	+ 2% or more
↗	steady up	from +1% to +1,9%
→	steady	+/- 1 %
↘	steady down	from -1% to -1,9%
↓	down	- 2% or less

*New ConTex evaluation is EXCLUDING
2500/2700/3500/4250 TEU groups for
12 months period

New ConTex-Commentary - issued:		08.02.18
In the pre-Chinese New Year week the New ConTex has been stepping sideways respectively with a very moderate upward trend.		
Considering however an idle fleet staying well below 2 percent overall and a firming of the box rates which have, as per Shanghai Freight Index, increased more than 20 percent since early December, 2017 the sentiment remaining still fairly positiv and should continue after the Chinese New Year Celebrations.		
The New ConTex stepped up another 3 points and stands at 432 which is now 43% more on a year-on-year basis.		
All the component rates were marked at least marginally higher with only one exception of the 2500 TEU size which lost 0,2% basis 12 month respectively stayed at same rate basis 24 month. The biggest winner in this week was again the 4250 TEU size with another 2% increase basis 12 month and 1,3% basis 24 month.		

New ConTex Development											
Vessel type		Evaluated Period	Today	Week-on-Week			Month-on-Month			Year-on-Year	
			08.02.18	01.02.18	Change	Change	09.01.18	Change	Change	07.02.17	Change
New ConTex*			432	429	3	↗ 0,7%	409	23	5,6%	302	130
New ConTex	1100 TEU	12 mos	\$7.258	\$7.192	\$66	↗ 0,9%	\$6.837	\$421	6,2%	\$6.175	1.083
	1700 TEU		\$9.687	\$9.606	\$81	↗ 0,8%	\$8.977	\$710	7,9%	\$6.626	3.061
	2500 TEU	24 mos	\$10.312	\$10.314	-\$2	↘ 0,0%	\$10.020	\$292	2,9%	\$6.918	3.394
	2700 TEU		\$10.368	\$10.336	\$32	↗ 0,3%	\$10.078	\$290	2,9%	\$7.162	3.206
	3500 TEU		\$10.412	\$10.331	\$81	↗ 0,8%	\$9.760	\$652	6,7%	\$6.677	3.735
	4250 TEU		\$10.426	\$10.297	\$129	↗ 1,3%	\$9.648	\$778	8,1%	\$6.446	3.980
New ConTex	2500 TEU	12 mos	\$9.390	\$9.412	-\$22	↘ -0,2%	\$9.122	\$268	2,9%	\$5.998	3.392
	2700 TEU		\$9.385	\$9.365	\$20	↗ 0,2%	\$9.144	\$241	2,6%	\$6.269	3.116
	3500 TEU		\$9.244	\$9.213	\$31	↗ 0,3%	\$8.684	\$560	6,4%	\$5.490	3.754
	4250 TEU		\$8.945	\$8.766	\$179	↗ 2,0%	\$8.095	\$850	10,5%	\$4.270	4.675



Disclaimer

The brand NewConTex is copyrighted by Vereinigung Hamburger Schiffsmakler und Schiffsagenten e.V. ("VHSS e.V.") and is protected by law. The NewConTex may be published only with the source reference © VHSS e.V. It is distributed to the general public for information purposes only and cannot be relied upon as a trading recommendation and does not constitute a solicitation to trade. The reported information is obtained from market sources. While every effort has been made to ensure the accuracy and the completeness of the NewConTex, VHSS e.V. makes no representations, conditions or warranties of any kind, express or implied, about the completeness, accuracy, reliability, or suitability of the NewConTex. Any reliance you place on the NewConTex is therefore strictly at your own risk. Neither VHSS e.V. nor any of its subsidiaries or affiliates nor any employee of the foregoing shall be liable or have any responsibility for any loss, liability or damage, cost or expense including without limitation, indirect or consequential loss or damage, or any loss or damage whatsoever arising from loss of data or profits arising out of, or in connection with, the use of and the reliance on the NewConTex, save for death or personal injury arising from VHSS e.V. negligence and fraudulent misrepresentation that cannot, under German law, be excluded.