



**New ConTex  
Container Ship Time Charter Assessment Index**

New ConTex*		2908	
01.09.22		6 mos	12 mos
Geared	1100 TEU	\$33.392	n.a.
	1700 TEU	\$52.279	
	2500 TEU	\$66.909	
Gearless	2700 TEU	n.a.	\$73.923
	3500 TEU		\$82.390
	4250 TEU		\$96.900

Legend		
↑	up	+ 2% or more
↗	steady up	from +1% to +1,9%
→	steady	+/- 1 %
↘	steady down	from -1% to -1,9%
↓	down	- 2% or less

\*New ConTex evaluation is EXCLUDING 1100/1700/5700/6500 TEU groups for 12 months period & 2500/2700/3500/4250 TEU groups for 24 months period

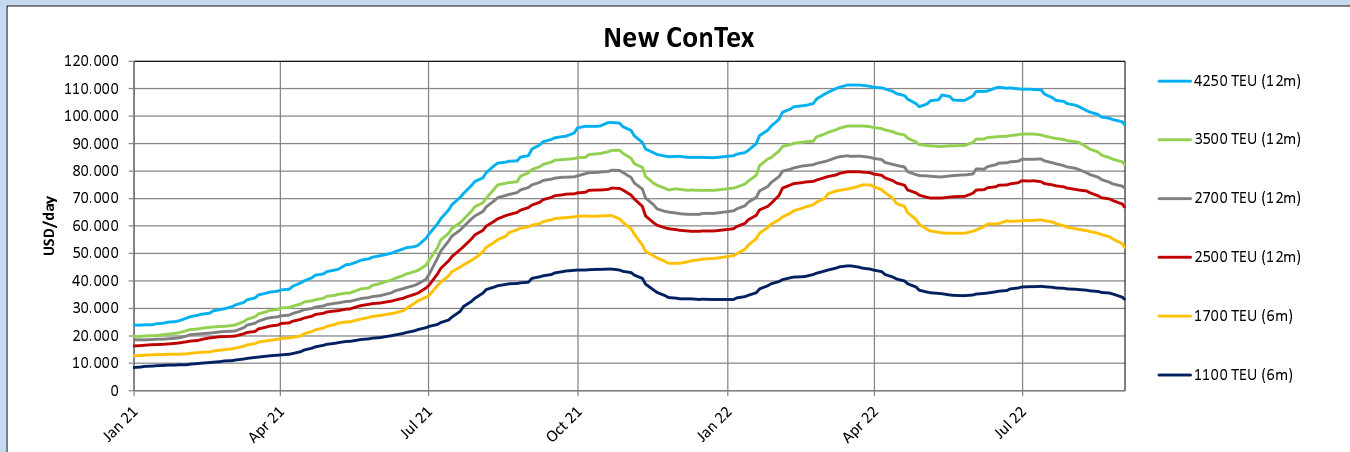
**New ConTex-Commentary - issued: 01.09.22**

With the meteorological autumn starting to day and cooler temperatures now prevalent than we experienced this summer, also the chartering market is cooling off – at least the expectations for same. Having seen stronger decreases in all segments this week, the New ConTex dropped 3.2% to below 3000 points for the first time since January this year.

The number of fixtures concluded is low and so seem to be the expectations that activity will pick up substantially, soon.

The figures for 1100 and 1700 TEU for both, short and long periods, suffered the most and fell above average, whereas the decreases of especially the larger sizes (Panamaxes and up) remained well below the average drop. With global economy signs not really looking bright for the near future, and energy prices still on the climb with growing inflation in the surge, it remains to be seen whether supply and demand of tonnage will keep the balance or whether flurry will set in (again).

New ConTex Development											
Vessel type	Evaluated Period	Today 01.09.22	25.08.22	Week-on-Week		Month-on-Month			Year-on-Year		
				Change	Change	02.08.22	Change	Change	02.09.21	Change	Change
<b>New ConTex*</b>		<b>2908</b>	3004	-96	↓ -3,2%	3196	-288	↓ -9,0%	3016	-108	↓ -3,6%
1100 TEU	6 mos	\$33.392	\$35.171	-\$1.779	↓ -5,1%	\$36.914	-\$3.522	↓ -9,5%	\$40.879	-\$7.487	↓ -18,3%
	12 mos	\$29.938	\$31.225	-\$1.287	↓ -4,1%	\$33.745	-\$3.807	↓ -11,3%	\$35.267	-\$5.329	↓ -15,1%
1700 TEU	6 mos	\$52.279	\$55.238	-\$2.959	↓ -5,4%	\$59.018	-\$6.739	↓ -11,4%	\$60.254	-\$7.975	↓ -13,2%
	12 mos	\$47.267	\$49.871	-\$2.604	↓ -5,2%	\$53.807	-\$6.540	↓ -12,2%	\$46.338	\$929	↑ 2,0%
2500 TEU	12 mos	\$66.909	\$69.295	-\$2.386	↓ -3,4%	\$73.332	-\$6.423	↓ -8,8%	\$67.677	-\$768	↓ -1,1%
	24 mos	\$49.400	\$50.864	-\$1.464	↓ -2,9%	\$53.618	-\$4.218	↓ -7,9%	\$43.655	\$5.745	↑ 13,2%
2700 TEU	12 mos	\$73.923	\$75.377	-\$1.454	↓ -1,9%	\$80.977	-\$7.054	↓ -8,7%	\$74.977	-\$1.054	↓ -1,4%
	24 mos	\$54.336	\$55.355	-\$1.019	↓ -1,8%	\$58.232	-\$3.896	↓ -6,7%	\$46.623	\$7.713	↑ 16,5%
3500 TEU	12 mos	\$82.390	\$84.295	-\$1.905	↓ -2,3%	\$90.678	-\$8.288	↓ -9,1%	\$80.555	\$1.835	↑ 2,3%
	24 mos	\$62.990	\$63.275	-\$285	→ -0,5%	\$67.023	-\$4.033	↓ -6,0%	\$51.680	\$11.310	↑ 21,9%
4250 TEU	12 mos	\$96.900	\$98.745	-\$1.845	↓ -1,9%	\$103.990	-\$7.090	↓ -6,8%	\$88.035	\$8.865	↑ 10,1%
	24 mos	\$71.100	\$72.225	-\$1.125	↓ -1,6%	\$77.483	-\$6.383	↓ -8,2%	\$62.250	\$8.850	↑ 14,2%
5700 TEU	12 mos	\$116.389	\$116.639	-\$250	→ -0,2%	\$120.367	-\$3.978	↓ -3,3%	\$98.950	\$17.439	↑ 17,6%
6500 TEU	12 mos	\$121.833	\$122.917	-\$1.084	→ -0,9%	\$126.600	-\$4.767	↓ -3,8%	\$106.478	\$15.355	↑ 14,4%



Disclaimer

The brand NewConTex is copyrighted by Verband Hamburger und Bremer Schiffsmakler e.V. ("VHBS e.V.") and is protected by law. The NewConTex may be published only with the source reference © VHBS e.V. It is distributed to the general public for information purposes only and can not be relied upon as a trading recommendation and does not constitute a solicitation to trade. The reported information is obtained from market sources. While every effort has been made to ensure the accuracy and the completeness of the NewConTex, VHBS e.V. makes no representations, conditions or warranties of any kind, express or implied, about the completeness, accuracy, reliability, or suitability of the NewConTex. Any reliance you place on the NewConTex is therefore strictly at your own risk. Neither VHBS e.V. nor any of its subsidiaries or affiliates nor any employee of the foregoing shall be liable or have any responsibility for any loss, liability or damage, cost or expense including without limitation, indirect or consequential loss or damage, or any loss or damage whatsoever arising from loss of data or profits arising out of, or in connection with, the use of and the reliance on the NewConTex, save for death or personal injury arising from VHBS e.V. negligence and fraudulent misrepresentation that cannot, under German law, be excluded.