



New ConTex Container Ship Time Charter Assessment Index

New ConTex*		437	
10.09.20		6 mos	12 mos
Geared	1100 TEU	\$5.977	n.a.
	1700 TEU	\$7.709	
	2500 TEU	\$9.675	
Gearless	2700 TEU	n.a.	\$10.428
	3500 TEU		\$11.886
	4250 TEU		\$14.867

Legend		
↑	up	+ 2% or more
↔	steady up	from +1% to +1,9%
↔	steady	+/- 1%
↔	steady down	from -1% to -1,9%
↓	down	- 2% or less

*New ConTex evaluation is EXCLUDING 1100/1700/5700/6500 TEU groups for 12 months period & 2500/2700/3500/4250 TEU groups for 24 months period

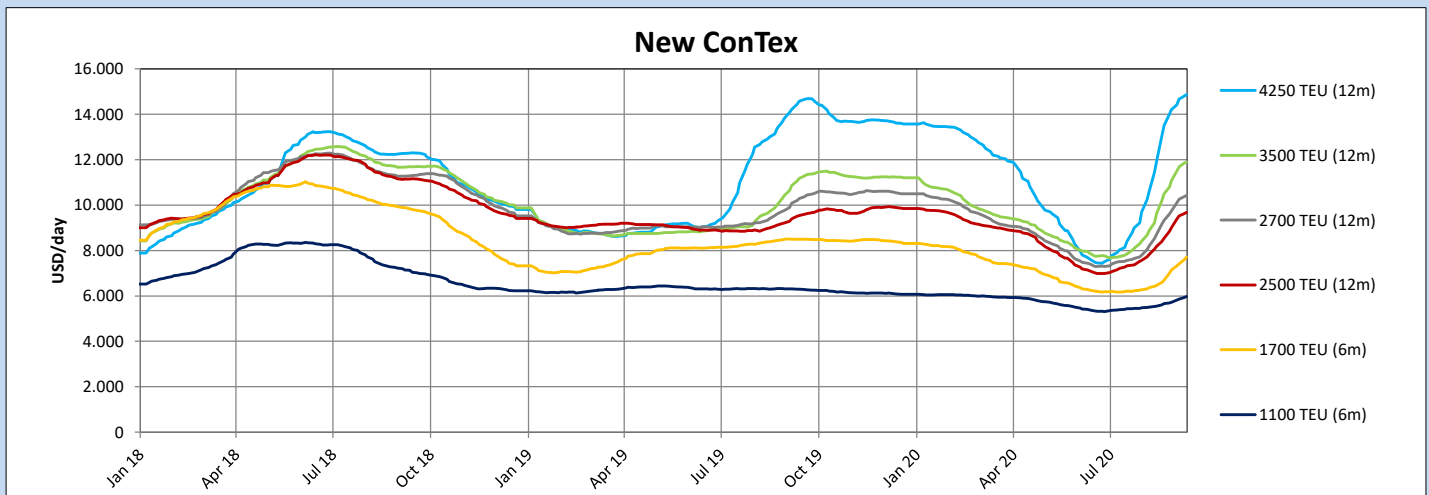
New ConTex-Commentary - issued: 10.09.20

The New ConTex increased by another 8 points this week, remaining slightly below the last year's figures. All segments could register an increase, albeit slightly smaller than the previous weeks. Month-on-Month all segments show strong and positive developments with as much as 29% increases in the larger segments. The only segment in the single-digits was the 1,100 TEU segment, gaining 7-8%.

Looking at Week-on-Week figures, there has been only 1-2% growth in the larger segments with no real new benchmarks been set this week. Activity was rather muted due to very low availability of vessels, however there is still quite some demand which is mainly fueled by sky-high freight rates on the Transpacific and elsewhere.

Sizes between 2k TEU and 4k TEU also saw a slight uptick at just below 2%. Here, the Far East market is much stronger than the Atlantic, so that vessels are looking to secure cargo in order to position to Asia. The largest increase this week was in the 1,700 TEU segment, with a 4.0% gain Week-on-Week. Similar to the bigger sizes above, 1,700 TEU vessels in the Mediterranean are also looking to the Far East for employment possibilities as the rate gap between the two areas is at least USD 2,000 per day.

New ConTex Development														
Vessel type	Evaluated Period	Today 10.09.20	Week-on-Week		Month-on-Month			Year-on-Year						
			03.09.20	Change	Change	11.08.20	Change	Change	10.09.19	Change	Change			
New ConTex*		437	429	8	↔	1,9%	360	77	↑	21,4%	441	-4	↔	-0,9%
1100 TEU	6 mos	\$5.977	\$5.861	\$116	↔	2,0%	\$5.532	\$445	↑	8,0%	\$6.296	-\$319	↓	-5,1%
	12 mos	\$6.146	\$6.018	\$128	↑	2,1%	\$5.717	\$429	↑	7,5%	\$6.452	-\$306	↓	-4,7%
1700 TEU	6 mos	\$7.709	\$7.409	\$300	↑	4,0%	\$6.425	\$1.284	↑	20,0%	\$8.494	-\$785	↓	-9,2%
	12 mos	\$7.969	\$7.641	\$328	↑	4,3%	\$6.634	\$1.335	↑	20,1%	\$8.709	-\$740	↓	-8,5%
2500 TEU	12 mos	\$9.675	\$9.530	\$145	↔	1,5%	\$8.060	\$1.615	↑	20,0%	\$9.511	\$164	↔	1,7%
	24 mos	\$10.212	\$10.109	\$103	↔	1,0%	\$8.713	\$1.499	↑	17,2%	\$10.353	-\$141	↔	-1,4%
2700 TEU	12 mos	\$10.428	\$10.264	\$164	↔	1,6%	\$8.529	\$1.899	↑	22,3%	\$10.194	\$234	↑	2,3%
	24 mos	\$10.802	\$10.684	\$118	↔	1,1%	\$9.178	\$1.624	↑	17,7%	\$10.936	-\$134	↔	-1,2%
3500 TEU	12 mos	\$11.886	\$11.684	\$202	↔	1,7%	\$9.219	\$2.667	↑	28,9%	\$11.060	\$826	↑	7,5%
	24 mos	\$12.239	\$12.115	\$124	↔	1,0%	\$9.880	\$2.359	↑	23,9%	\$11.600	\$639	↑	5,5%
4250 TEU	12 mos	\$14.867	\$14.674	\$193	↔	1,3%	\$11.447	\$3.420	↑	29,9%	\$14.446	\$421	↑	2,9%
	24 mos	\$14.929	\$14.780	\$149	↔	1,0%	\$12.102	\$2.827	↑	23,4%	\$14.612	\$317	↑	2,2%
5700 TEU	12 mos	\$19.180	\$18.760	\$420	↑	2,2%	\$14.852	\$4.328	↑	29,1%	\$21.439	-\$2.259	↓	-10,5%
6500 TEU	12 mos	\$21.198	\$20.948	\$250	↔	1,2%	\$17.150	\$4.048	↑	23,6%	\$26.161	-\$4.963	↓	-19,0%



Disclaimer

The brand NewConTex is copyrighted by Verband Hamburger und Bremer Schiffsmakler e.V. ("VHBS e.V.") and is protected by law. The NewConTex may be published only with the source reference © VHBS e.V. It is distributed to the general public for information purposes only and cannot be relied upon as a trading recommendation and does not constitute a solicitation to trade. The reported information is obtained from market sources. While every effort has been made to ensure the accuracy and the completeness of the NewConTex, VHBS e.V. makes no representations, conditions or warranties of any kind, express or implied, about the completeness, accuracy, reliability, or suitability of the NewConTex. Any reliance you place on the NewConTex is therefore strictly at your own risk. Neither VHBS e.V. nor any of its subsidiaries or affiliates nor any employee of the foregoing shall be liable or have any responsibility for any loss, liability or damage, cost or expense including without limitation, indirect or consequential loss or damage, or any loss or damage whatsoever arising from loss of data or profits arising out of, or in connection with, the use of and the reliance on the NewConTex, save for death or personal injury arising from VHBS e.V. negligence and fraudulent misrepresentation that cannot, under German law, be excluded.