



New ConTex Container Ship Time Charter Assessment Index

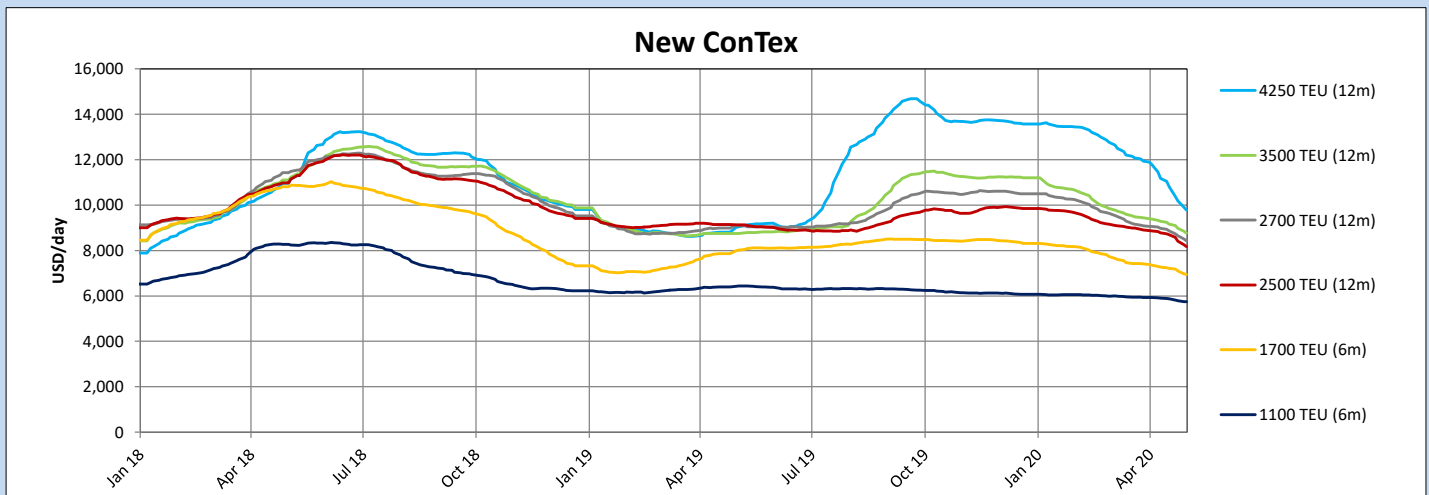
New ConTex*		355	
30.04.20		6 mos	12 mos
Geared	1100 TEU	\$5,745	n.a.
	1700 TEU	\$6,939	
	2500 TEU	\$8,173	
Gearless	2700 TEU	n.a.	\$8,425
	3500 TEU		\$8,767
	4250 TEU		\$9,775

Legend		
↑	up	+ 2% or more
↗	steady up	from +1% to +1,9%
→	steady	+/- 1%
↘	steady down	from -1% to -1,9%
↓	down	- 2% or less

*New ConTex evaluation is EXCLUDING 1100/1700/5700/6500 TEU groups for 12 months period & 2500/2700/3500/4250 TEU groups for 24 months period

New ConTex-Commentary - issued:	30.04.20
<p>The pace of decline, compared to last week, continues. The New ConTex lost another 9 points which equals abt. 2.5%. Basically the same percentage of drop can be observed over most of the sizes, except for the 1100 TEU, which decrease by only around 0.7%, whereas the Panamaxes facing another 4.0% slide in the 12 months segment. Y-o-y we are now looking at an 11.5% drop of the index - and with further redeliveries expected we see, as of now, no real incentive for improved rates. Unless Covid-19 is under control at all part of the world, expectations have to be kept low.</p> <p>Stay healthy!</p>	

New ConTex Development											
Vessel type	Evaluated Period	Today 30.04.20	Week-on-Week		Month-on-Month			Year-on-Year			
			23.04.20	Change	Change	31.03.20	Change	Change	30.04.19	Change	Change
New ConTex*		355	364	-9	↓ -2.5%	386	-31	↓ -8.0%	400	-45	↓ -11.3%
1100 TEU	6 mos	\$5,745	\$5,787	-\$42	↘ -0.7%	\$5,932	-\$187	↓ -3.2%	\$6,417	-\$672	↓ -10.5%
	12 mos	\$5,871	\$5,912	-\$41	↘ -0.7%	\$6,008	-\$137	↓ -2.3%	\$6,617	-\$746	↓ -11.3%
1700 TEU	6 mos	\$6,939	\$7,094	-\$155	↓ -2.2%	\$7,380	-\$441	↓ -6.0%	\$7,983	-\$1,044	↓ -13.1%
	12 mos	\$7,137	\$7,315	-\$178	↓ -2.4%	\$7,565	-\$428	↓ -5.7%	\$8,255	-\$1,118	↓ -13.5%
2500 TEU	12 mos	\$8,173	\$8,417	-\$244	↓ -2.9%	\$8,877	-\$704	↓ -7.9%	\$9,127	-\$954	↓ -10.5%
	24 mos	\$8,882	\$9,094	-\$212	↓ -2.3%	\$9,504	-\$622	↓ -6.5%	\$10,039	-\$1,157	↓ -11.5%
2700 TEU	12 mos	\$8,425	\$8,647	-\$222	↓ -2.6%	\$9,065	-\$640	↓ -7.1%	\$9,119	-\$694	↓ -7.6%
	24 mos	\$9,078	\$9,286	-\$208	↓ -2.2%	\$9,693	-\$615	↓ -6.3%	\$10,014	-\$936	↓ -9.3%
3500 TEU	12 mos	\$8,767	\$8,979	-\$212	↓ -2.4%	\$9,392	-\$625	↓ -6.7%	\$8,750	\$17	↗ 0.2%
	24 mos	\$9,480	\$9,643	-\$163	↘ -1.7%	\$10,048	-\$568	↓ -5.7%	\$9,721	-\$241	↓ -2.5%
4250 TEU	12 mos	\$9,775	\$10,183	-\$408	↓ -4.0%	\$11,895	-\$2,120	↓ -17.8%	\$9,010	\$765	↑ 8.5%
	24 mos	\$10,457	\$10,880	-\$423	↓ -3.9%	\$12,312	-\$1,855	↓ -15.1%	\$9,946	\$511	↑ 5.1%
5700 TEU	12 mos	\$15,315	\$15,763	-\$448	↓ -2.8%	\$17,173	-\$1,858	↓ -10.8%	-	-	-
6500 TEU	12 mos	\$17,770	\$18,150	-\$380	↓ -2.1%	\$20,658	-\$2,888	↓ -14.0%	-	-	-



Disclaimer

The brand NewConTex is copyrighted by Verband Hamburger und Bremer Schiffsmakler e.V. ("VHBS e.V.") and is protected by law. The NewConTex may be published only with the source reference © VHBS e.V. It is distributed to the general public for information purposes only and cannot be relied upon as a trading recommendation and does not constitute a solicitation to trade. The reported information is obtained from market sources. While every effort has been made to ensure the accuracy and the completeness of the NewConTex, VHBS e.V. makes no representations, conditions or warranties of any kind, express or implied, about the completeness, accuracy, reliability, or suitability of the NewConTex. Any reliance you place on the NewConTex is therefore strictly at your own risk. Neither VHBS e.V. nor any of its subsidiaries or affiliates nor any employee of the foregoing shall be liable or have any responsibility for any loss, liability or damage, cost or expense including without limitation, indirect or consequential loss or damage, or any loss or damage whatsoever arising from loss of data or profits arising out of, or in connection with, the use of and the reliance on the NewConTex, save for death or personal injury arising from VHBS e.V. negligence and fraudulent misrepresentation that cannot, under German law, be excluded.