

Hamburg and Bremen Shipbrokers' Association (VHBS)

New ConTex Container Ship Time Charter Assessment Index

New ConTex*		425	
30.01.20		12 mos	24 mos
Gearless	1100 TEU	\$6.160	n.a.
	1700 TEU	\$8.388	n.a.
	2500 TEU	\$9.660	\$10.233
Gearless	2700 TEU	\$10.240	\$10.705
	3500 TEU	\$10.670	\$11.180
	4250 TEU	\$13.440	\$13.387

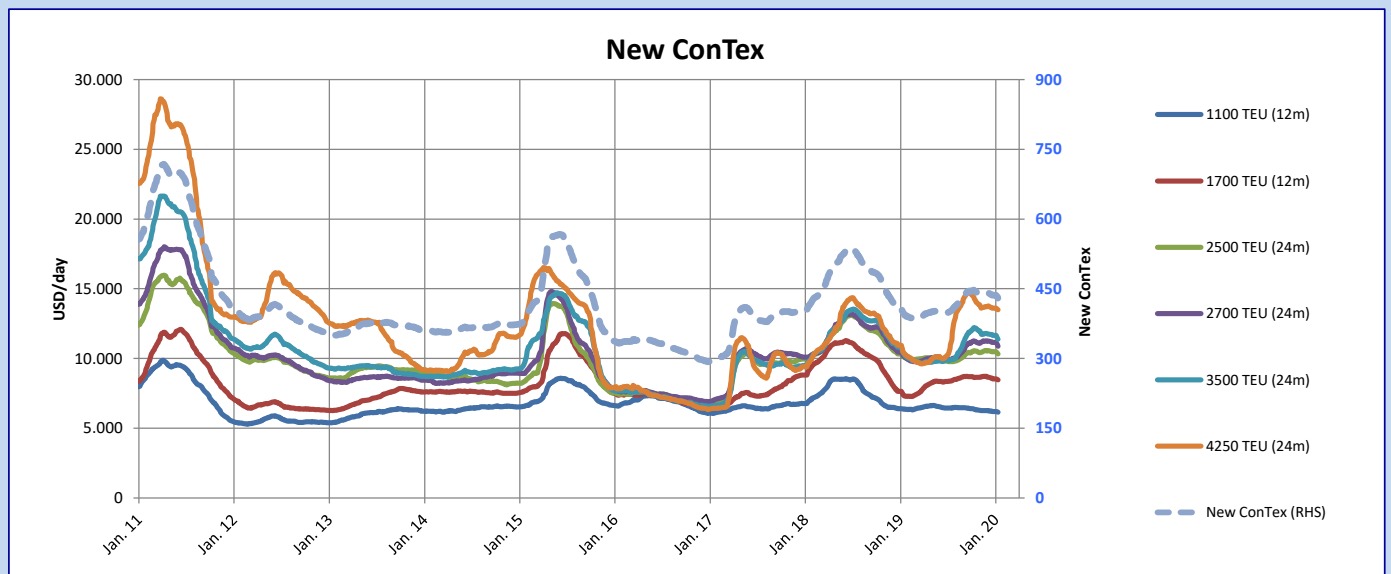
Legend		
↑	up	+ 2% or more
↔	steady up	from +1% to +1,9%
↔	steady	+/- 1 %
↔	steady down	from -1% to -1,9%
↓	down	- 2% or less

*New ConTex evaluation is EXCLUDING
2500/2700/3500/4250 TEU groups for
12 months period

New ConTex-Commentary - issued:		30.01.20
<p>Concerns surrounding productivity at Chinese ports caused by the Coronavirus, combined with Chinese New Year and a reasonably significant supply of prompt tonnage, might be beginning to have an impact on requirements and rates. The New ConTex only dropped 1 point this week to 425 but we expect to see further weakening with about 70-80 ships prompt worldwide - about 75% of which are below 2000 TEU and about 50% of the ships are in Asia. Every size in the ConTex decreased this week but only by a very small amount, between 0.1% and 0.8%. 3500s decreased \$73 for 24 month fixtures, as MSC fixed a ship in Atlantic for 12 months at only USD 10,250pd, while 2500s decreased \$73 for 12 month fixtures, with a dry-dock replacement in Asia obtaining only USD 9,500pd. 4250s only dropped 0.3% for 24 months and 0.1% for 12 months and there are far fewer baby-panamaxes and panamaxes available than any of the other sizes. However, this doesn't necessarily mean they won't decline more than the smaller sizes if supply does begin to outweigh demand to any degree, considering the differences in rates between 2500s, 2700s, 3500s and 4250s were far narrower 12 months ago. There are more prompt 1100 and 1700s available than any other size but feeder charter rates and the ConTex remain stable, the 12 month figure for both 1100s and 1700s dropped only 0.1%</p>		

New ConTex Development

Vessel type	Evaluated Period	Today	Week-on-Week		Month-on-Month		Year-on-Year					
		30.01.20	23.01.20	Change	Change	31.12.19	Change	Change	29.01.19	Change	Change	
New ConTex*		425	426	-1	↔ -0,2%	436	-11	↓ -2,5%	390	35	9,0%	
New ConTex	12 mos	1100 TEU	\$6.160	\$6.165	-\$5	↔ -0,1%	\$6.192	-\$32	↔ -0,5%	\$6.342	-182	-2,9%
		1700 TEU	\$8.388	\$8.398	-\$10	↔ -0,1%	\$8.547	-\$159	↔ -1,9%	\$7.291	1.097	15,0%
		2500 TEU	\$10.233	\$10.285	-\$52	↔ -0,5%	\$10.480	-\$247	↔ -2,4%	\$9.967	266	2,7%
	24 mos	2700 TEU	\$10.705	\$10.744	-\$39	↔ -0,4%	\$11.148	-\$443	↔ -4,0%	\$9.953	752	7,6%
		3500 TEU	\$11.180	\$11.253	-\$73	↔ -0,6%	\$11.663	-\$483	↔ -4,1%	\$10.044	1.136	11,3%
		4250 TEU	\$13.387	\$13.429	-\$42	↔ -0,3%	\$13.606	-\$219	↔ -1,6%	\$10.150	3.237	31,9%
Gearless	12 mos	2500 TEU	\$9.660	\$9.733	-\$73	↔ -0,8%	\$9.843	-\$183	↔ -1,9%	\$9.043	617	6,8%
		2700 TEU	\$10.240	\$10.276	-\$36	↔ -0,4%	\$10.500	-\$260	↔ -2,5%	\$8.933	1.307	14,6%
		3500 TEU	\$10.670	\$10.722	-\$52	↔ -0,5%	\$11.195	-\$525	↔ -4,7%	\$8.981	1.689	18,8%
		4250 TEU	\$13.440	\$13.459	-\$19	↔ -0,1%	\$13.569	-\$129	↔ -1,0%	\$9.015	4.425	49,1%



Disclaimer

The brand NewConTex is copyrighted by Verband Hamburger und Bremer Schiffsmakler e.V. ("VHBS e.V.") and is protected by law. The NewConTex may be published only with the source reference © VHBS e.V. It is distributed to the general public for information purposes only and cannot be relied upon as a trading recommendation and does not constitute a solicitation to trade. The reported information is obtained from market sources. While every effort has been made to ensure the accuracy and the completeness of the NewConTex, VHBS e.V. makes no representations, conditions or warranties of any kind, express or implied, about the completeness, accuracy, reliability, or suitability of the NewConTex. Any reliance you place on the NewConTex is therefore strictly at your own risk. Neither VHBS e.V. nor any of its subsidiaries or affiliates nor any employee of the foregoing shall be liable or have any responsibility for any loss, liability or damage, cost or expense including without limitation, indirect or consequential loss or damage, or any loss or damage whatsoever arising from loss of data or profits arising out of, or in connection with, the use of and the reliance on the NewConTex, save for death or personal injury arising from VHBS e.V. negligence and fraudulent misrepresentation that cannot, under German law, be excluded.