

# Hamburg and Bremen Shipbrokers' Association (VHBS)

## New ConTex

### Container Ship Time Charter Assessment Index

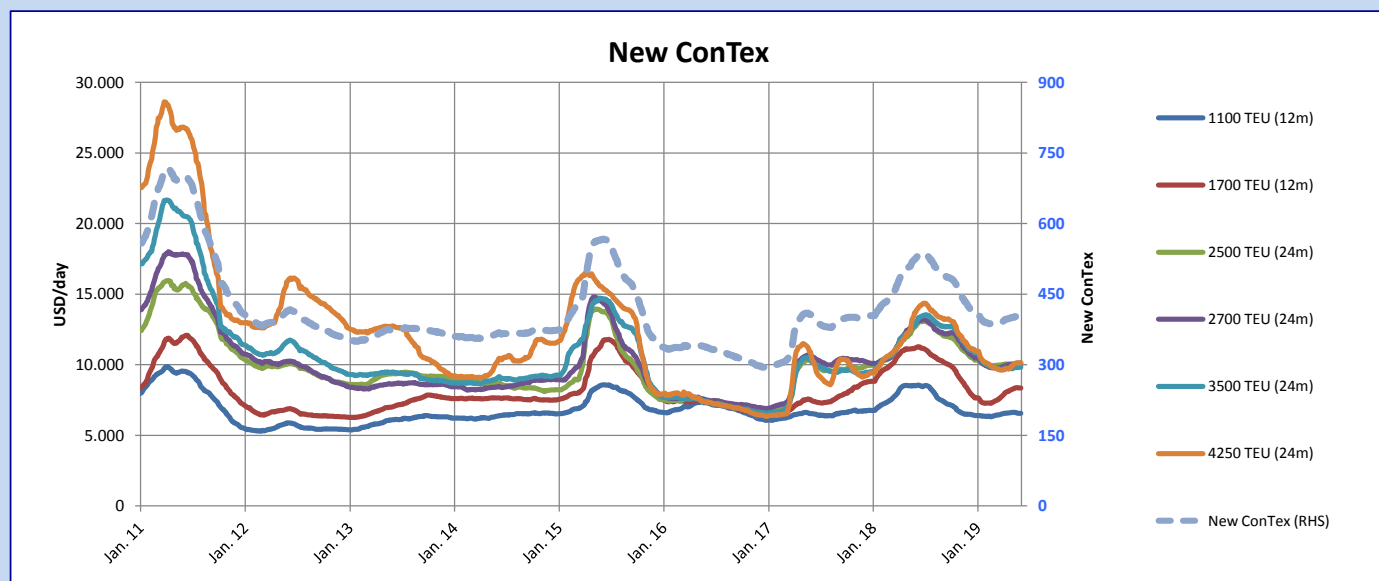
New ConTex*		402	
28.05.19		12 mos	24 mos
Gearless	1100 TEU	\$6.548	n.a.
	1700 TEU	\$8.344	
	2500 TEU	\$9.018	\$9.965
	2700 TEU	\$9.046	\$10.110
	3500 TEU	\$8.825	\$9.825
4250 TEU		\$9.194	\$10.134

Legend		
↑	up	+ 2% or more
↗	steady up	from +1% to +1,9%
→	steady	+/- 1 %
↘	steady down	from -1% to -1,9%
↓	down	- 2% or less

\*New ConTex evaluation is EXCLUDING  
2500/2700/3500/4250 TEU groups for  
12 months period

New ConTex-Commentary - issued:	28.05.19
<p>The present trend within the container market is unfortunately a touch negative recently. With a lack of fresh requirements within the feeder segments in combination with a slowly increasing number of tonnage threatening on the horizon. An influx of fresh business is needed to refuel the optimism. So far Owners are more or less able to keep the time charter rates around last done levels, but this is an increasingly difficult job. The New ConTex is reflecting this trend since it has move upwards only marginally since beginning of April; on 04th April the index was at 396 points and registers at 402 points about 8 weeks later on 28th May. Interesting to note that this standard has not change since 07th May this year. The individual segments remain quite static this week with marginal gains of USD 31 week on week for the 4250 TEU class and a loss of USD 20 week on week on the 2500 TEU segment.</p>	

			New ConTex Development											
Vessel type		Evaluated Period	Today	Week-on-Week			Month-on-Month			Year-on-Year				
			28.05.19	23.05.19	Change	Change	30.04.19	Change	Change	29.05.18	Change	Change		
New ConTex	New ConTex*		402	402	0	➡	0,0%	400	2	➡	0,5%	526	-124	-23,6%
	1100 TEU	12 mos	\$6.548	\$6.554	-\$6	➡	-0,1%	\$6.617	-\$69	➡	-1,0%	\$8.519	-1.971	-23,1%
	1700 TEU		\$8.344	\$8.347	-\$3	➡	0,0%	\$8.255	\$89	➡	1,1%	\$11.216	-2.872	-25,6%
	2500 TEU		\$9.965	\$9.985	-\$20	➡	-0,2%	\$10.039	-\$74	➡	-0,7%	\$12.727	-2.762	-21,7%
	2700 TEU	24 mos	\$10.110	\$10.113	-\$3	➡	0,0%	\$10.014	\$96	➡	1,0%	\$12.966	-2.856	-22,0%
	3500 TEU		\$9.825	\$9.827	-\$2	➡	0,0%	\$9.721	\$104	➡	1,1%	\$12.867	-3.042	-23,6%
	4250 TEU		\$10.134	\$10.103	\$31	➡	0,3%	\$9.946	\$188	➡	1,9%	\$13.730	-3.596	-26,2%
	2500 TEU	12 mos	\$9.018	\$9.033	-\$15	➡	-0,2%	\$9.127	-\$109	➡	-1,2%	\$11.915	-2.897	-24,3%
	2700 TEU		\$9.046	\$9.043	\$3	➡	0,0%	\$9.119	-\$73	➡	-0,8%	\$12.045	-2.999	-24,9%
	3500 TEU		\$8.825	\$8.823	\$2	➡	0,0%	\$8.750	\$75	➡	0,9%	\$12.010	-3.185	-26,5%
4250 TEU	\$9.194		\$9.183	\$11	➡	0,1%	\$9.010	\$184	⬆	2,0%	\$12.668	-3.474	-27,4%	



Disclaimer

The brand NewConTex is copyrighted by Verband Hamburger und Bremer Schiffsmakler e.V. ("VHBS e.V.") and is protected by law. The NewConTex may be published only with the source reference © VHBS e.V. It is distributed to the general public for information purposes only and cannot be relied upon as a trading recommendation and does not constitute a solicitation to trade. The reported information is obtained from market sources. While every effort has been made to ensure the accuracy and the completeness of the NewConTex, VHBS e.V. makes no representations, conditions or warranties of any kind, express or implied, about the completeness, accuracy, reliability, or suitability of the NewConTex. Any reliance you place on the NewConTex is therefore strictly at your own risk. Neither VHBS e.V. nor any of its subsidiaries or affiliates nor any employee of the foregoing shall be liable or have any responsibility for any loss, liability or damage, cost or expense including without limitation, indirect or consequential loss or damage, or any loss or damage whatsoever arising from loss of data or profits arising out of, or in connection with, the use of and the reliance on the NewConTex, save for death or personal injury arising from VHBS e.V. negligence and fraudulent misrepresentation that cannot, under German law, be excluded.