

# Hamburg and Bremen Shipbrokers' Association (VHBS)

## New ConTex Container Ship Time Charter Assessment Index

New ConTex*		388	
07.03.19		12 mos	24 mos
Gearless	1100 TEU	\$6.442	n.a.
	1700 TEU	\$7.489	
	2500 TEU	\$9.138	\$9.968
	2700 TEU	\$8.743	\$9.757
	3500 TEU	\$8.738	\$9.771
	4250 TEU	\$8.760	\$9.721

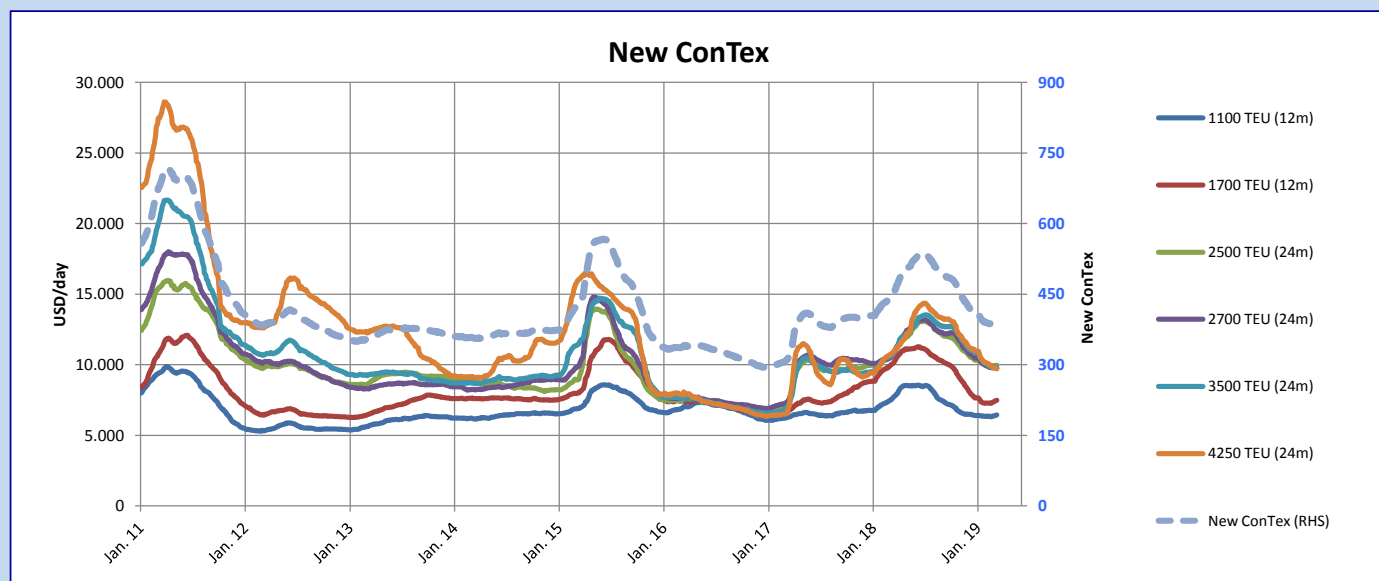
Legend		
↑	up	+ 2% or more
↔	steady up	from +1% to +1,9%
↔	steady	+/- 1 %
↔	steady down	from -1% to -1,9%
↓	down	- 2% or less

\*New ConTex evaluation is EXCLUDING  
2500/2700/3500/4250 TEU groups for  
12 months period

New ConTex-Commentary - issued:	07.03.19
<p>This week New ConTex again show an upward movement rising by 1 point, this is again a sign of the market stabilization still limited to vessel below 2700 teus Fixtures concluded are still increasing due to a stronger demand, one can still notice that rates in Asia are still suffering due to a high number of spot vessels.</p> <p>All in all this market stabilization as reflected by this week ConTex of 387 compared to last week 386 has not yet a real impact and the rise is still marginal.</p>	

### New ConTex Development

Vessel type	Evaluated Period	Today	Week-on-Week		Month-on-Month			Year-on-Year						
			07.03.19	28.02.19	Change	Change	05.02.19	Change	Change	06.03.18	Change	Change		
<b>New ConTex*</b>		<b>388</b>	387	1	↔	0,3%	388	0	↔	0,0%	444	-56	-12,6%	
New ConTex	12 mos	1100 TEU	\$6.442	\$6.400	\$42	↔	0,7%	\$6.345	\$97	↔	1,5%	\$7.559	-1.117	-14,8%
		1700 TEU	\$7.489	\$7.417	\$72	↔	1,0%	\$7.280	\$209	↑	2,9%	\$10.019	-2.530	-25,3%
		2500 TEU	\$9.968	\$9.946	\$22	↔	0,2%	\$9.921	\$47	↔	0,5%	\$10.577	-609	-5,8%
	24 mos	2700 TEU	\$9.757	\$9.793	-\$36	↔	-0,4%	\$9.877	-\$120	↔	-1,2%	\$10.572	-815	-7,7%
		3500 TEU	\$9.771	\$9.833	-\$62	↔	-0,6%	\$9.975	-\$204	↓	-2,0%	\$10.668	-897	-8,4%
		4250 TEU	\$9.721	\$9.801	-\$80	↔	-0,8%	\$10.081	-\$360	↓	-3,6%	\$10.755	-1.034	-9,6%
12 mos	2500 TEU	\$9.138	\$9.104	\$34	↔	0,4%	\$9.007	\$131	↔	1,5%	\$9.628	-490	-5,1%	
	2700 TEU	\$8.743	\$8.770	-\$27	↔	-0,3%	\$8.779	-\$36	↔	-0,4%	\$9.581	-838	-8,7%	
	3500 TEU	\$8.738	\$8.774	-\$36	↔	-0,4%	\$8.892	-\$154	↔	-1,7%	\$9.502	-764	-8,0%	
	4250 TEU	\$8.760	\$8.824	-\$64	↔	-0,7%	\$8.952	-\$192	↓	-2,1%	\$9.405	-645	-6,9%	



Disclaimer

The brand NewConTex is copyrighted by Verband Hamburger und Bremer Schiffsmakler e.V. ("VHBS e.V.") and is protected by law. The NewConTex may be published only with the source reference © VHBS e.V. It is distributed to the general public for information purposes only and cannot be relied upon as a trading recommendation and does not constitute a solicitation to trade. The reported information is obtained from market sources. While every effort has been made to ensure the accuracy and the completeness of the NewConTex, VHBS e.V. makes no representations, conditions or warranties of any kind, express or implied, about the completeness, accuracy, reliability, or suitability of the NewConTex. Any reliance you place on the NewConTex is therefore strictly at your own risk. Neither VHBS e.V. nor any of its subsidiaries or affiliates nor any employee of the foregoing shall be liable or have any responsibility for any loss, liability or damage, cost or expense including without limitation, indirect or consequential loss or damage, or any loss or damage whatsoever arising from loss of data or profits arising out of, or in connection with, the use of and the reliance on the NewConTex, save for death or personal injury arising from VHBS e.V. negligence and fraudulent misrepresentation that cannot, under German law, be excluded.