

Hamburg and Bremen Shipbrokers' Association (VHBS)

New ConTex Container Ship Time Charter Assessment Index

New ConTex*		387	
07.02.19		12 mos	24 mos
Gearless	1100 TEU	\$6.347	n.a.
	1700 TEU	\$7.288	n.a.
	2500 TEU	\$9.014	\$9.905
	2700 TEU	\$8.739	\$9.824
	3500 TEU	\$8.856	\$9.925
	4250 TEU	\$8.968	\$10.052

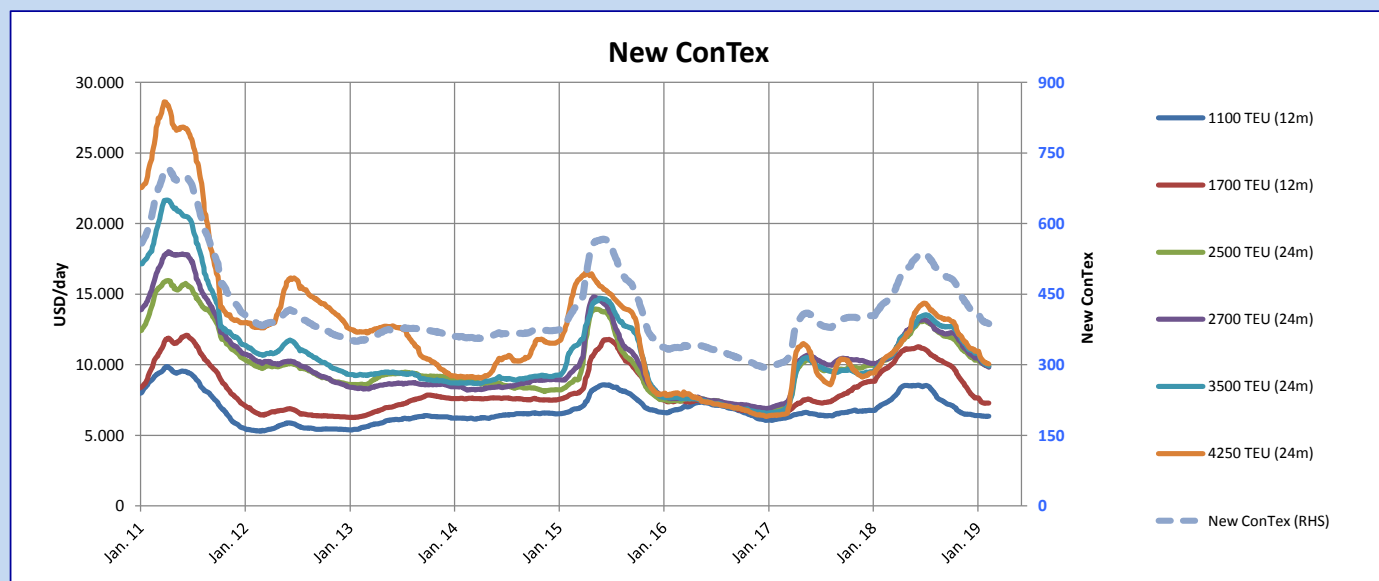
Legend		
↑	up	+ 2% or more
↗	steady up	from +1% to +1,9%
→	steady	+/- 1 %
↘	steady down	from -1% to -1,9%
↓	down	- 2% or less

*New ConTex evaluation is EXCLUDING
2500/2700/3500/4250 TEU groups for
12 months period

New ConTex-Commentary - issued:	07.02.19
<p>Despite the Asian holidays it has been a pretty active week with most of the European charterers actively seeking to cover their various openings. It seems that the rate erosion has been stopped in most of the segments and consequently the New ConTex only declined very marginally (- 0.5%) this week. Most activity has been seen for the 1700s in all areas and here it looks likely that rising rates could be possible for the next reported fixtures. A bit trailing behind the other segments are the 2700s with a 1.4% w-o-w decline, however also here the activity levels this week were quite high so that better rates could be expected as well. Baby Panamaxs are keeping remarkably well with only 0.2% less w-o-w despite the rather big tonnage overhang, interestingly for this segment the rate difference between Asia (about USD 8000-8500) and Atlantic (about USD 10,000) is tremendous since almost all open tonnage is concentrated in Asia. All in all the current high activity in many segments raises some hopes for another good spring season.</p>	

New ConTex Development

Vessel type	Evaluated Period	Today	Week-on-Week		Month-on-Month			Year-on-Year				
			07.02.19	31.01.19	Change	Change	08.01.19	Change	Change	06.02.18	Change	Change
New ConTex*		387	389	-2	↘ -0,5%	401	-14	↘ -3,5%	431	-44	-10,2%	
New ConTex	12 mos	1100 TEU	\$6.347	\$6.353	-\$6	↘ -0,1%	\$6.389	-\$42	↘ -0,7%	\$7.228	-881	-12,2%
		1700 TEU	\$7.288	\$7.290	-\$2	↘ 0,0%	\$7.480	-\$192	↘ -2,6%	\$9.648	-2.360	-24,5%
		2500 TEU	\$9.905	\$9.942	-\$37	↘ -0,4%	\$10.212	-\$307	↘ -3,0%	\$10.333	-428	-4,1%
	24 mos	2700 TEU	\$9.824	\$9.911	-\$87	↘ -0,9%	\$10.278	-\$454	↘ -4,4%	\$10.373	-549	-5,3%
		3500 TEU	\$9.925	\$10.002	-\$77	↘ -0,8%	\$10.478	-\$553	↘ -5,3%	\$10.363	-438	-4,2%
		4250 TEU	\$10.052	\$10.101	-\$49	↘ -0,5%	\$10.569	-\$517	↘ -4,9%	\$10.388	-336	-3,2%
New ConTex	12 mos	2500 TEU	\$9.014	\$9.038	-\$24	↘ -0,3%	\$9.324	-\$310	↘ -3,3%	\$9.400	-386	-4,1%
		2700 TEU	\$8.739	\$8.861	-\$122	↘ -1,4%	\$9.312	-\$573	↘ -6,2%	\$9.378	-639	-6,8%
		3500 TEU	\$8.856	\$8.931	-\$75	↘ -0,8%	\$9.461	-\$605	↘ -6,4%	\$9.205	-349	-3,8%
		4250 TEU	\$8.968	\$8.988	-\$20	↘ -0,2%	\$9.472	-\$504	↘ -5,3%	\$8.882	86	1,0%



Disclaimer

The brand NewConTex is copyrighted by Verband Hamburger und Bremer Schiffsmakler e.V. ("VHBS e.V.") and is protected by law. The NewConTex may be published only with the source reference © VHBS e.V. It is distributed to the general public for information purposes only and cannot be relied upon as a trading recommendation and does not constitute a solicitation to trade. The reported information is obtained from market sources. While every effort has been made to ensure the accuracy and the completeness of the NewConTex, VHBS e.V. makes no representations, conditions or warranties of any kind, express or implied, about the completeness, accuracy, reliability, or suitability of the NewConTex. Any reliance you place on the NewConTex is therefore strictly at your own risk. Neither VHBS e.V. nor any of its subsidiaries or affiliates nor any employee of the foregoing shall be liable or have any responsibility for any loss, liability or damage, cost or expense including without limitation, indirect or consequential loss or damage, or any loss or damage whatsoever arising from loss of data or profits arising out of, or in connection with, the use of and the reliance on the NewConTex, save for death or personal injury arising from VHBS e.V. negligence and fraudulent misrepresentation that cannot, under German law, be excluded.