

Hamburg and Bremen Shipbrokers' Association (VHBS)

New ConTex Container Ship Time Charter Assessment Index

New ConTex*		389	
31.01.19		12 mos	24 mos
Gearless	1100 TEU	\$6.353	n.a.
	1700 TEU	\$7.290	
	2500 TEU	\$9.038	\$9.942
	2700 TEU	\$8.861	\$9.911
	3500 TEU	\$8.931	\$10.002
	4250 TEU	\$8.988	\$10.101

Legend		
↑	up	+ 2% or more
↔	steady up	from +1% to +1,9%
→	steady	+/- 1 %
↔	steady down	from -1% to -1,9%
↓	down	- 2% or less

*New ConTex evaluation is EXCLUDING
2500/2700/3500/4250 TEU groups for
12 months period

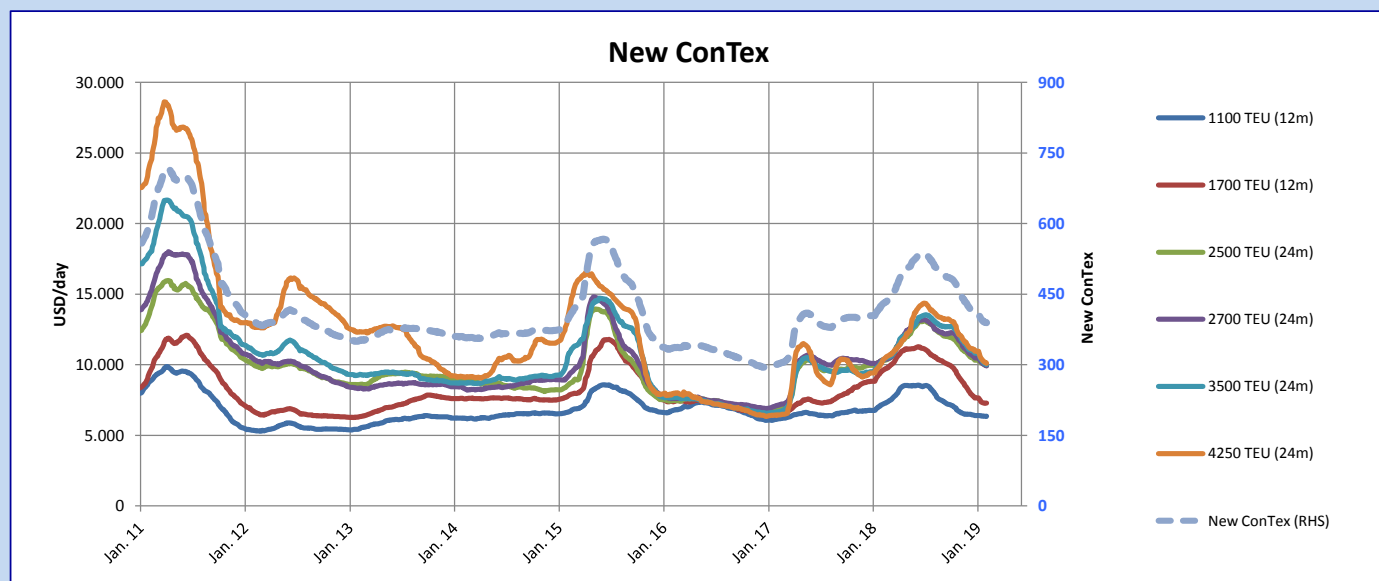
New ConTex-Commentary - issued:

31.01.19

For a second straight week there was an overall continuous demand throughout the segments, with a healthy amount of fixtures being registered. Although the supply of available tonnage is far from scarce, the latest soar in demand have at least for now stabilised the t/c rates, which is reflected in the Index. The New ConTex this week went down 1 point to 389, whereas the previous weeks it has been down by a minimum of 3 points. As January and February are traditionally quiet, it will be interesting to see if sentiment can continue and even move the rates upwards once Chinese New Year has passed. The 2700 TEU segment had the only arrow pointing downwards, down 1.2%, due to several fixtures being concluded at relatively low levels. The 1100 TEU and 1700 TEU segment saw least change from last week, only dropping 0.1% and 0.3% respectively. Although, Year-on-Year they have had by far the largest decrease. The 2500 and 4250 TEU segments both had stable trends with a decrease of 0.4%, whilst the 3500s are right on the border of a downward arrow, dropping 0.9%. Even though 2019 did not have the best start, it will be interesting to follow whether the market is in fact stabilizing and the create a more positive prospect moving forward in 2019.

New ConTex Development

Vessel type	Evaluated Period	Today	Week-on-Week		Month-on-Month			Year-on-Year						
			31.01.19	24.01.19	Change	Change	01.01.19	Change	Change	30.01.18	Change	Change		
New ConTex*		389	390	-1	↔	-0,3%	408	-19	↓	-4,7%	427	-38	-8,9%	
New ConTex	12 mos	1100 TEU	\$6.353	\$6.358	-\$5	↔	-0,1%	\$6.410	-\$57	↔	-0,9%	\$7.173	-820	-11,4%
		1700 TEU	\$7.290	\$7.271	\$19	↔	0,3%	\$7.640	-\$350	↓	-4,6%	\$9.534	-2.244	-23,5%
		2500 TEU	\$9.942	\$9.986	-\$44	↔	-0,4%	\$10.320	-\$378	↓	-3,7%	\$10.322	-380	-3,7%
	24 mos	2700 TEU	\$9.911	\$9.979	-\$68	↔	-0,7%	\$10.472	-\$561	↓	-5,4%	\$10.306	-395	-3,8%
		3500 TEU	\$10.002	\$10.067	-\$65	↔	-0,6%	\$10.814	-\$812	↓	-7,5%	\$10.224	-222	-2,2%
		4250 TEU	\$10.101	\$10.174	-\$73	↔	-0,7%	\$10.952	-\$851	↓	-7,8%	\$10.135	-34	-0,3%
12 mos	2500 TEU	\$9.038	\$9.072	-\$34	↔	-0,4%	\$9.416	-\$378	↓	-4,0%	\$9.432	-394	-4,2%	
	2700 TEU	\$8.861	\$8.967	-\$106	↔	-1,2%	\$9.523	-\$662	↓	-7,0%	\$9.369	-508	-5,4%	
	3500 TEU	\$8.931	\$9.011	-\$80	↔	-0,9%	\$9.871	-\$940	↓	-9,5%	\$9.175	-244	-2,7%	
	4250 TEU	\$8.988	\$9.025	-\$37	↔	-0,4%	\$9.808	-\$820	↓	-8,4%	\$8.646	342	4,0%	



Disclaimer

The brand NewConTex is copyrighted by Verband Hamburger und Bremer Schiffsmakler e.V. ("VHBS e.V.") and is protected by law. The NewConTex may be published only with the source reference © VHBS e.V. It is distributed to the general public for information purposes only and cannot be relied upon as a trading recommendation and does not constitute a solicitation to trade. The reported information is obtained from market sources. While every effort has been made to ensure the accuracy and the completeness of the NewConTex, VHBS e.V. makes no representations, conditions or warranties of any kind, express or implied, about the completeness, accuracy, reliability, or suitability of the NewConTex. Any reliance you place on the NewConTex is therefore strictly at your own risk. Neither VHBS e.V. nor any of its subsidiaries or affiliates nor any employee of the foregoing shall be liable or have any responsibility for any loss, liability or damage, cost or expense including without limitation, indirect or consequential loss or damage, or any loss or damage whatsoever arising from loss of data or profits arising out of, or in connection with, the use of and the reliance on the NewConTex, save for death or personal injury arising from VHBS e.V. negligence and fraudulent misrepresentation that cannot, under German law, be excluded.