



New ConTex Container Ship Time Charter Assessment Index

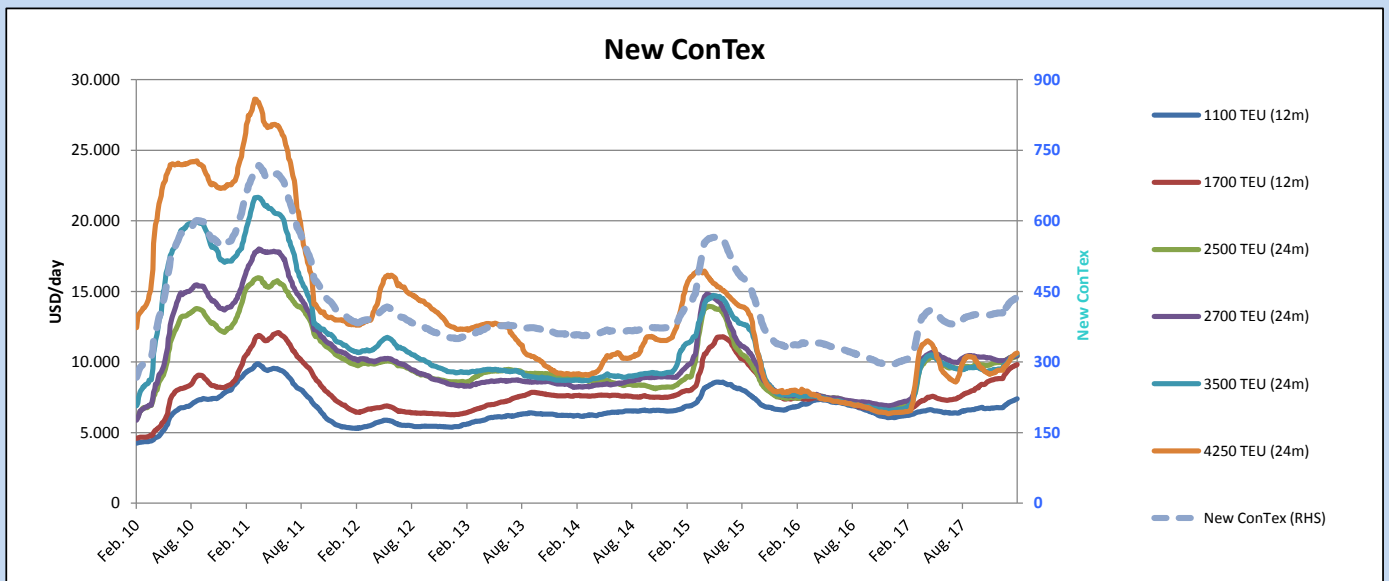
New ConTex*		438	
22.02.18		12 mos	24 mos
Geared	1100 TEU	\$7.407	n.a.
	1700 TEU	\$9.828	
	2500 TEU	\$9.478	\$10.410
Gearless	2700 TEU	\$9.426	\$10.447
	3500 TEU	\$9.370	\$10.546
	4250 TEU	\$9.180	\$10.651

Legend		
↑	up	+ 2% or more
↗	steady up	from +1% to +1,9%
→	steady	+/- 1%
↘	steady down	from -1% to -1,9%
↓	down	- 2% or less

*New ConTex evaluation is EXCLUDING
2500/2700/3500/4250 TEU groups for
12 months period

New ConTex-Commentary - issued:	22.02.18
<p>Chinese New Year is over but it did not feel like holidays this time with the New ConTex climbing 1,4% over the last two weeks. One of the biggest gainers has been the 1100 TEU segment where tonnage really is in short supply and even in Asia the 7' mark has been reached now for the standard CV1100 design. Similar picture for the 4250 TEU segment which increased by 2,1% during the holiday period while also the other segments did not show any weakness.</p> <p>Further gains are expected for more or less all segments once all market participants are back at their desks. With tonnage availability on a very low level, negligible idle fleet numbers and cargo quantities continued to be strong, everything seem to be set for the next phase of market recovery.</p>	

New ConTex Development												
Vessel type	Evaluated Period	Today 22.02.18	Week-on-Week		Month-on-Month			Year-on-Year				
			15.02.18	Change	Change	23.01.18	Change	Change	21.02.17	Change	Change	
New ConTex*		438	435	3	↗	0,7%	420	18	4,3%	305	133	43,6%
New ConTex	1100 TEU	\$7.407	\$7.322	\$85	↗	1,2%	\$7.048	\$359	5,1%	\$6.208	1.199	19,3%
	1700 TEU	\$9.828	\$9.753	\$75	↗	0,8%	\$9.378	\$450	4,8%	\$6.636	3.192	48,1%
	2500 TEU	\$10.410	\$10.355	\$55	↗	0,5%	\$10.208	\$202	2,0%	\$7.109	3.301	46,4%
	2700 TEU	\$10.447	\$10.396	\$51	↗	0,5%	\$10.180	\$267	2,6%	\$7.222	3.225	44,7%
	3500 TEU	\$10.546	\$10.504	\$42	↗	0,4%	\$9.975	\$571	5,7%	\$6.786	3.760	55,4%
	4250 TEU	\$10.651	\$10.581	\$70	↗	0,7%	\$9.905	\$746	7,5%	\$6.497	4.154	63,9%
New ConTex	2500 TEU	\$9.478	\$9.429	\$49	↗	0,5%	\$9.361	\$117	1,2%	\$6.176	3.302	53,5%
	2700 TEU	\$9.426	\$9.407	\$19	↗	0,2%	\$9.308	\$118	1,3%	\$6.305	3.121	49,5%
	3500 TEU	\$9.370	\$9.318	\$52	↗	0,6%	\$9.009	\$361	4,0%	\$5.620	3.750	66,7%
	4250 TEU	\$9.180	\$9.113	\$67	↗	0,7%	\$8.499	\$681	8,0%	\$4.358	4.822	110,6%



Disclaimer

The brand NewConTex is copyrighted by Vereinigung Hamburger Schiffsmakler und Schiffsagenten e. V. ("VHSS e.V.") and is protected by law. The NewConTex may be published only with the source reference © VHSS e.V. It is distributed to the general public for information purposes only and cannot be relied upon as a trading recommendation and does not constitute a solicitation to trade. The reported information is obtained from market sources. While every effort has been made to ensure the accuracy and the completeness of the NewConTex, VHSS e.V. makes no representations, conditions or warranties of any kind, express or implied, about the completeness, accuracy, reliability, or suitability of the NewConTex. Any reliance you place on the NewConTex is therefore strictly at your own risk. Neither VHSS e.V. nor any of its subsidiaries or affiliates nor any employee of the foregoing shall be liable or have any responsibility for any loss, liability or damage, cost or expense including without limitation, indirect or consequential loss or damage, or any loss or damage whatsoever arising from loss of data or profits arising out of, or in connection with, the use of and the reliance on the NewConTex, save for death or personal injury arising from VHSS e.V. negligence and fraudulent misrepresentation that cannot, under German law, be excluded.