



New ConTex Container Ship Time Charter Assessment Index

New ConTex*		435	
15.02.18		12 mos	24 mos
Geared	1100 TEU	\$7.322	n.a.
	1700 TEU	\$9.753	
	2500 TEU	\$9.429	\$10.355
Gearless	2700 TEU	\$9.407	\$10.396
	3500 TEU	\$9.318	\$10.504
	4250 TEU	\$9.113	\$10.581

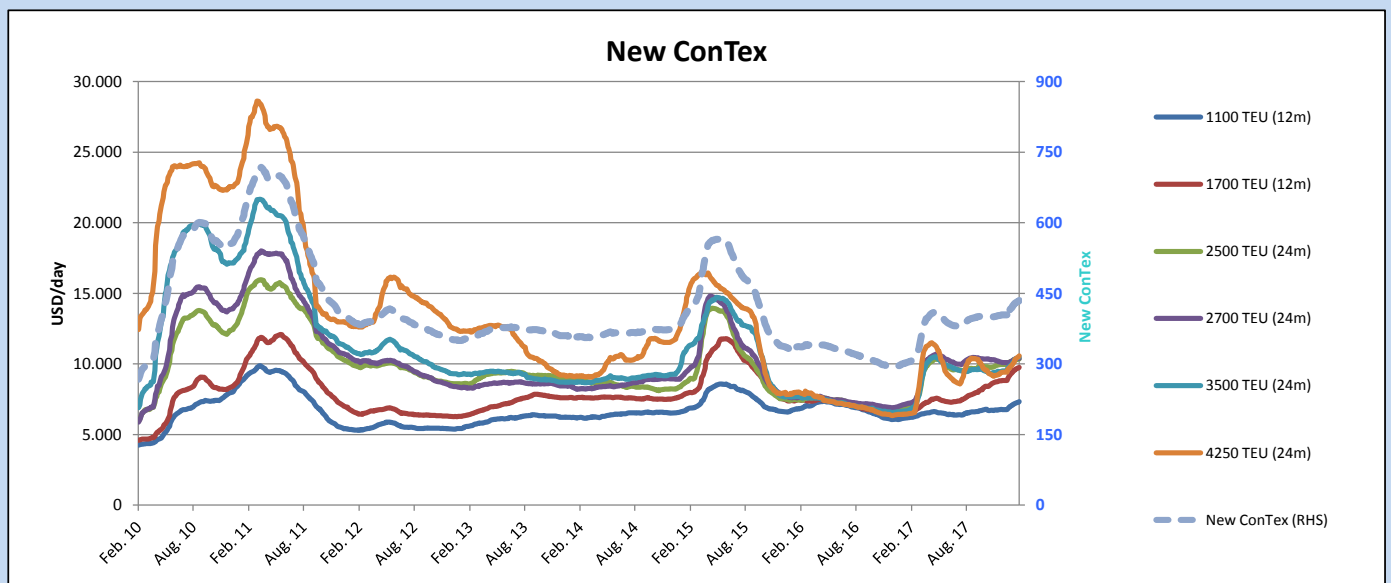
Legend		
↑	up	+ 2% or more
↗	steady up	from +1% to +1,9%
→	steady	+/- 1%
↘	steady down	from -1% to -1,9%
↓	down	- 2% or less

*New ConTex evaluation is EXCLUDING 2500/2700/3500/4250 TEU groups for 12 months period

New ConTex-Commentary - issued:	15.02.18
<p>Despite the chinese new year holidays the charter market continues to be fairly active in all segments. Idle fleet has become minimal and with uncovered demand for March-April the holidays are not expected to have any impact on rate developments.</p> <p>The New ConTex was up a further 3 points this week and similar to the previous week the 4250 TEU segment experienced the highest gain for both the 12 and 24 months rating with a 1,9 pct gain this week.</p> <p>Present indications point however towards the 1700 and 3500 TEU segment which recorded continued improvement but indeed holding further upward potential. Both segments appear to lack tonnage which likely to influence the market during the coming month.</p>	

New ConTex Development

Vessel type	Evaluated Period	Today 15.02.18	Week-on-Week		Month-on-Month		Year-on-Year				
			08.02.18	Change	16.01.18	Change	14.02.17	Change	Change		
New ConTex*		435	432	3 ↗ 0,7%	415	20	4,8%	304	131	43,1%	
New ConTex	12 mos	1100 TEU	\$7.322	\$7.258	\$64 ↗ 0,9%	\$6.967	\$355	5,1%	\$6.192	1.130	18,2%
		1700 TEU	\$9.753	\$9.687	\$66 ↗ 0,7%	\$9.222	\$531	5,8%	\$6.636	3.117	47,0%
		2500 TEU	\$10.355	\$10.312	\$43 ↗ 0,4%	\$10.134	\$221	2,2%	\$6.994	3.361	48,1%
	24 mos	2700 TEU	\$10.396	\$10.368	\$28 ↗ 0,3%	\$10.122	\$274	2,7%	\$7.210	3.186	44,2%
		3500 TEU	\$10.504	\$10.412	\$92 ↗ 0,9%	\$9.852	\$652	6,6%	\$6.717	3.787	56,4%
4250 TEU	\$10.581	\$10.426	\$155 ↗ 1,5%	\$9.763	\$818	8,4%	\$6.464	4.117	63,7%		
New ConTex	12 mos	2500 TEU	\$9.429	\$9.390	\$39 ↗ 0,4%	\$9.259	\$170	1,8%	\$6.086	3.343	54,9%
		2700 TEU	\$9.407	\$9.385	\$22 ↗ 0,2%	\$9.234	\$173	1,9%	\$6.307	3.100	49,2%
		3500 TEU	\$9.318	\$9.244	\$74 ↗ 0,8%	\$8.874	\$444	5,0%	\$5.551	3.767	67,9%
		4250 TEU	\$9.113	\$8.945	\$168 ↗ 1,9%	\$8.317	\$796	9,6%	\$4.305	4.808	111,7%



Disclaimer

The brand NewConTex is copyrighted by Vereinigung Hamburger Schiffsmakler und Schiffsagenten e. V. ("VHSS e.V.") and is protected by law. The NewConTex may be published only with the source reference © VHSS e.V. It is distributed to the general public for information purposes only and cannot be relied upon as a trading recommendation and does not constitute a solicitation to trade. The reported information is obtained from market sources. While every effort has been made to ensure the accuracy and the completeness of the NewConTex, VHSS e.V. makes no representations, conditions or warranties of any kind, express or implied, about the completeness, accuracy, reliability, or suitability of the NewConTex. Any reliance you place on the NewConTex is therefore strictly at your own risk. Neither VHSS e.V. nor any of its subsidiaries or affiliates nor any employee of the foregoing shall be liable or have any responsibility for any loss, liability or damage, cost or expense including without limitation, indirect or consequential loss or damage, or any loss or damage whatsoever arising from loss of data or profits arising out of, or in connection with, the use of and the reliance on the NewConTex, save for death or personal injury arising from VHSS e.V. negligence and fraudulent misrepresentation that cannot, under German law, be excluded.