



## New ConTex Container Ship Time Charter Assessment Index

New ConTex*		429	
01.02.18		12 mos	24 mos
Gearless	1100 TEU	\$7.192	n.a.
	1700 TEU	\$9.606	
	2500 TEU	\$9.412	\$10.314
Gearless	2700 TEU	\$9.365	\$10.336
	3500 TEU	\$9.213	\$10.331
	4250 TEU	\$8.766	\$10.297

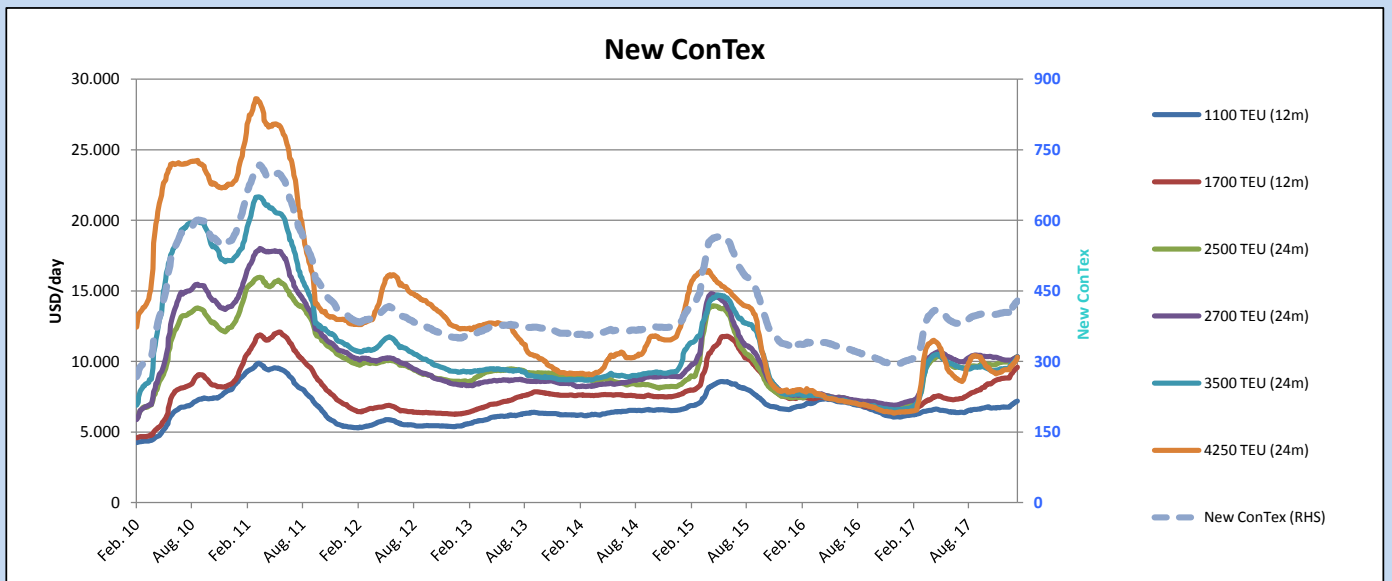
Legend		
↑	up	+ 2% or more
↗	steady up	from +1% to +1,9%
→	steady	+/- 1%
↘	steady down	from -1% to -1,9%
↓	down	- 2% or less

\*New ConTex evaluation is EXCLUDING  
2500/2700/3500/4250 TEU groups for  
12 months period

New ConTex-Commentary - issued:	01.02.18
<p>The month of February has always been a crucial month to observe the further development of the charter rates. It's the month of the CNY and therefore a quiet month is expected but the key difference is that the increased rates of the last months of 2017 have remained stable and even increased during the first month of 2018. If we take a look at the New ConTex development we will see that the rates have upward stable trends (+ 5 points or 1,2%).</p> <p>The 4250 and 3500 vessels being amongst the biggest losers of 2017 achieve still decent rates ranging from high 8s up to low 9s in some cases which is a rather positive development for these segments. Some pressure is expected at the advent of CNY but this remains to be seen as there are not many vessels available.</p> <p>There is no surprise for the 2700 teu vessels rate development. Marginally positive 0,8% and in line with the general sentiment for this mainly sold out sector. One should also keep an eye on the MARIC designs.</p> <p>And now, we move on to the star performers of the last weeks, TOPAZ and Wenchong 1700 MK II types that drive, in a way, the general trend of this sector achieving above 11K already and assisting the older Wenchong 1700s to ascend to low-mid 9s. Closing, the 1100s appear finally strong (7K-low 7s) and have room for improvement. But no time for celebrations yet. February should be a month of cautious optimism.</p>	

### New ConTex Development

Vessel type	Evaluated Period	Today 01.02.18	Week-on-Week			Month-on-Month			Year-on-Year			
			25.01.18	Change	Change	02.01.18	Change	Change	31.01.17	Change	Change	
<b>New ConTex*</b>		<b>429</b>	424	5	↗	1,2%	404	25	6,2%	301	128	42,5%
New ConTex	1100 TEU	\$7.192	\$7.135	\$57	↗	0,8%	\$6.772	\$420	6,2%	\$6.148	1.044	17,0%
	1700 TEU	\$9.606	\$9.482	\$124	↗	1,3%	\$8.817	\$789	8,9%	\$6.575	3.031	46,1%
	2500 TEU	\$10.314	\$10.265	\$49	↗	0,5%	\$9.968	\$346	3,5%	\$6.883	3.431	49,8%
	2700 TEU	\$10.336	\$10.250	\$86	↗	0,8%	\$10.091	\$245	2,4%	\$7.121	3.215	45,1%
	3500 TEU	\$10.331	\$10.093	\$238	↑	2,4%	\$9.501	\$830	8,7%	\$6.655	3.676	55,2%
	4250 TEU	\$10.297	\$10.006	\$291	↑	2,9%	\$9.405	\$892	9,5%	\$6.428	3.869	60,2%
New ConTex	2500 TEU	\$9.412	\$9.387	\$25	↗	0,3%	\$9.008	\$404	4,5%	\$5.935	3.477	58,6%
	2700 TEU	\$9.365	\$9.327	\$38	↗	0,4%	\$9.131	\$234	2,6%	\$6.262	3.103	49,6%
	3500 TEU	\$9.213	\$9.092	\$121	↗	1,3%	\$8.423	\$790	9,4%	\$5.436	3.777	69,5%
	4250 TEU	\$8.766	\$8.588	\$178	↑	2,1%	\$7.895	\$871	11,0%	\$4.242	4.524	106,6%



Disclaimer

The brand NewConTex is copyrighted by Vereinigung Hamburger Schiffsmakler und Schiffsagenten e.V. ("VHSS e.V.") and is protected by law. The NewConTex may be published only with the source reference © VHSS e.V. It is distributed to the general public for information purposes only and cannot be relied upon as a trading recommendation and does not constitute a solicitation to trade. The reported information is obtained from market sources. While every effort has been made to ensure the accuracy and the completeness of the NewConTex, VHSS e.V. makes no representations, conditions or warranties of any kind, express or implied, about the completeness, accuracy, reliability, or suitability of the NewConTex. Any reliance you place on the NewConTex is therefore strictly at your own risk. Neither VHSS e.V. nor any of its subsidiaries or affiliates nor any employee of the foregoing shall be liable or have any responsibility for any loss, liability or damage, cost or expense including without limitation, indirect or consequential loss or damage, or any loss or damage whatsoever arising from loss of data or profits arising out of, or in connection with, the use of and the reliance on the NewConTex, save for death or personal injury arising from VHSS e.V. negligence and fraudulent misrepresentation that cannot, under German law, be excluded.