



New ConTex Container Ship Time Charter Assessment Index

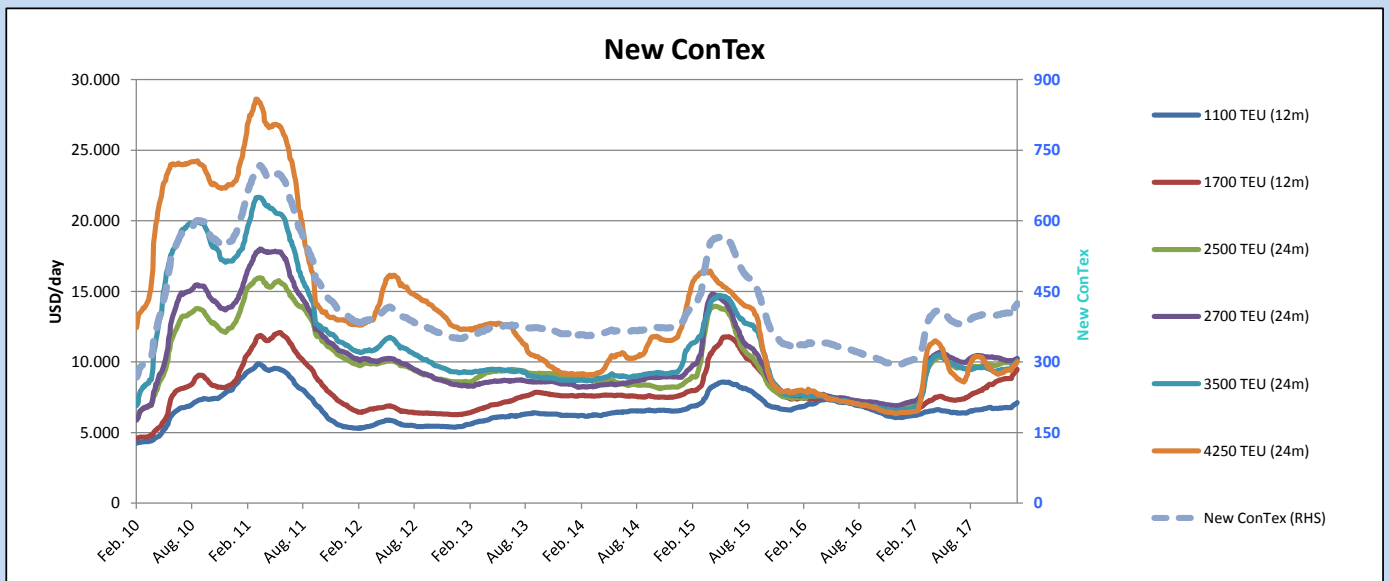
New ConTex*		424	
25.01.18		12 mos	24 mos
Gearless	1100 TEU	\$7.135	n.a.
	1700 TEU	\$9.482	n.a.
	2500 TEU	\$9.387	\$10.265
Gearless	2700 TEU	\$9.327	\$10.250
	3500 TEU	\$9.092	\$10.093
	4250 TEU	\$8.588	\$10.006

Legend		
↑	up	+ 2% or more
↗	steady up	from +1% to +1,9%
→	steady	+/- 1%
↘	steady down	from -1% to -1,9%
↓	down	- 2% or less

*New ConTex evaluation is EXCLUDING 2500/2700/3500/4250 TEU groups for 12 months period

New ConTex-Commentary - issued:	25.01.18
<p>The container market continues to develop in the way the new year started, with rising cargo volumes combined with a shortage of ships in most sizes and in most regions. The result is an improvement in rates across the board at a time such a trend would be least expected (even when the market was much higher than these days).</p> <p>The New ConTex Index has gained a further 7 points on last week and now stands at 424. All the component rates were marked higher again, further evidence that the market recovery is uniform rather than patchy.</p> <p>Another phenomenon is that each sector is experiencing fairly similar gains since last week, with rates being marked typically in the range of 1.7 to 2.0 percentage points higher. Once again the classical panamax (4250 TEUs) are recording the greatest improvement (2.2% basis 12 months and 1.9% basis 24 months). The smallest gains were seen in the 2700 TEUs (0.7% basis 12 months and 0.9% basis 24 months) but, even here, the improvements should be judged by the time of year.</p>	

		New ConTex Development										
Vessel type	Evaluated Period	Today	Week-on-Week				Month-on-Month			Year-on-Year		
		25.01.18	18.01.18	Change	Change	26.12.17	Change	Change	24.01.17	Change	Change	
New ConTex*		424	417	7	↗	1,7%	404	20	5,0%	300	124	41,3%
New ConTex	1100 TEU	\$7.135	\$7.010	\$125	↗	1,8%	\$6.772	\$363	5,4%	\$6.131	1.004	16,4%
	1700 TEU	\$9.482	\$9.291	\$191	↑	2,1%	\$8.817	\$665	7,5%	\$6.550	2.932	44,8%
	2500 TEU	\$10.265	\$10.163	\$102	↗	1,0%	\$9.968	\$297	3,0%	\$6.843	3.422	50,0%
	2700 TEU	\$10.250	\$10.160	\$90	↗	0,9%	\$10.091	\$159	1,6%	\$7.091	3.159	44,5%
	3500 TEU	\$10.093	\$9.884	\$209	↑	2,1%	\$9.501	\$592	6,2%	\$6.651	3.442	51,8%
	4250 TEU	\$10.006	\$9.820	\$186	↗	1,9%	\$9.405	\$601	6,4%	\$6.433	3.573	55,5%
New ConTex	2500 TEU	\$9.387	\$9.309	\$78	↗	0,8%	\$9.008	\$379	4,2%	\$5.876	3.511	59,8%
	2700 TEU	\$9.327	\$9.265	\$62	↗	0,7%	\$9.131	\$196	2,1%	\$6.207	3.120	50,3%
	3500 TEU	\$9.092	\$8.937	\$155	↗	1,7%	\$8.423	\$669	7,9%	\$5.411	3.681	68,0%
	4250 TEU	\$8.588	\$8.407	\$181	↑	2,2%	\$7.895	\$693	8,8%	\$4.246	4.342	102,3%



Disclaimer

The brand NewConTex is copyrighted by Vereinigung Hamburger Schiffsmakler und Schiffsagenten e. V. ("VHSS e.V.") and is protected by law. The NewConTex may be published only with the source reference © VHSS e.V. It is distributed to the general public for information purposes only and cannot be relied upon as a trading recommendation and does not constitute a solicitation to trade. The reported information is obtained from market sources. While every effort has been made to ensure the accuracy and the completeness of the NewConTex, VHSS e.V. makes no representations, conditions or warranties of any kind, express or implied, about the completeness, accuracy, reliability, or suitability of the NewConTex. Any reliance you place on the NewConTex is therefore strictly at your own risk. Neither VHSS e.V. nor any of its subsidiaries or affiliates nor any employee of the foregoing shall be liable or have any responsibility for any loss, liability or damage, cost or expense including without limitation, indirect or consequential loss or damage, or any loss or damage whatsoever arising from loss of data or profits arising out of, or in connection with, the use of and the reliance on the NewConTex, save for death or personal injury arising from VHSS e.V. negligence and fraudulent misrepresentation that cannot, under German law, be excluded.