



## New ConTex Container Ship Time Charter Assessment Index

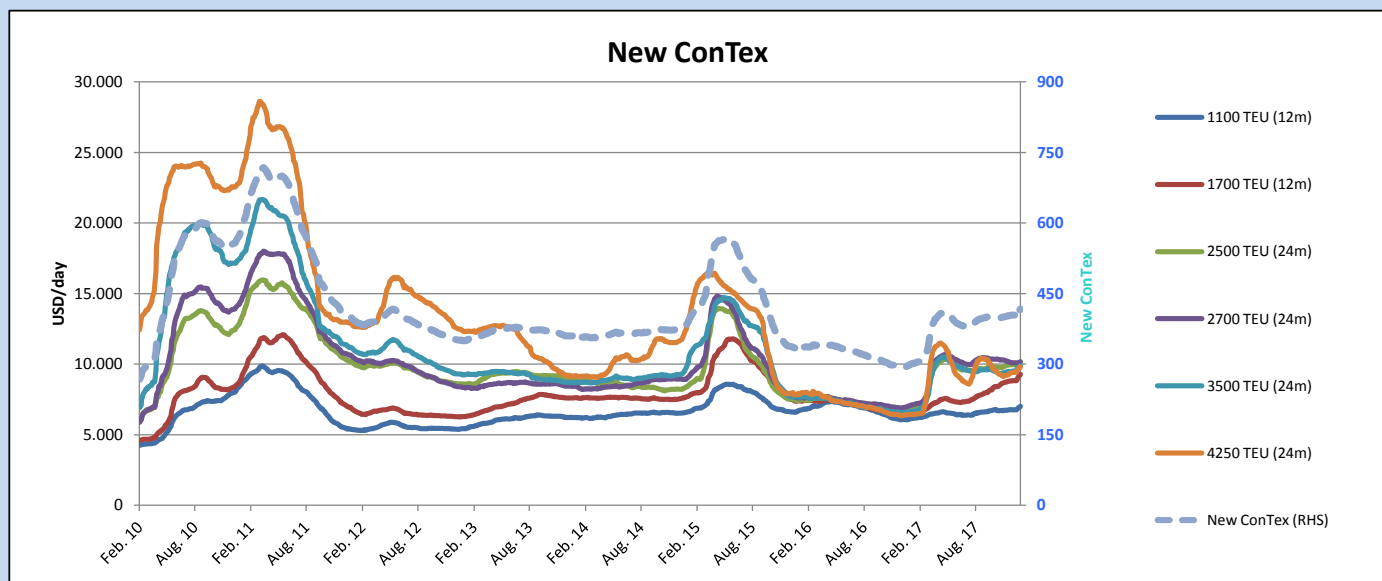
New ConTex*		417	
18.01.18		12 mos	24 mos
Geared	1100 TEU	\$7.010	n.a.
	1700 TEU	\$9.291	
	2500 TEU	\$9.309	
Gearless	2700 TEU	\$9.265	\$10.160
	3500 TEU	\$8.937	\$9.884
	4250 TEU	\$8.407	\$9.820

Legend		
↑	up	+ 2% or more
↗	steady up	from +1% to +1,9%
→	steady	+/- 1 %
↘	steady down	from -1% to -1,9%
↓	down	- 2% or less

\*New ConTex evaluation is EXCLUDING  
2500/2700/3500/4250 TEU groups for  
12 months period

New ConTex-Commentary - issued:		18.01.18
<p>This week the New ConTex moved another 6 points (=1,5%) up, which is confirming the overall trend in the market where the signs remain positive. Today's level of 417 points was last seen in Autumn 2015 with 416 points on 15th October 2015! The Index is now continuously going up since mid November 2017 coming from 399 points. A year ago the ConTex remained around 300 points from mid October 2016 until end February 2017.</p> <p>Every segment in the New ConTex is actually showing positive tendency compared to the week before. Highlighted in actual rates by the 1700 Teu size basis 12 mos evaluation with an increase of more than usd 200 daily as we expected already in our commentary last week. The biggest gain was actually seen in the Panamx (4250TEU) evaluation for the 12 mos period with usd 252 daily = 3,1% on a Week-on-Week basis.</p> <p>This general trend will likely continue, especially in the smaller sizes, as Owners successfully aim for an increase on hire levels compared to "last done".</p>		

New ConTex Development											
Vessel type		Evaluated Period	Today	Week-on-Week			Month-on-Month			Year-on-Year	
			18.01.18	11.01.18	Change	Change	19.12.17	Change	Change	17.01.17	Change
New ConTex*			417	411	6	↗ 1,5%	404	13	3,2%	297	120
New ConTex	1100 TEU	12 mos	\$7.010	\$6.909	\$101	↗ 1,5%	\$6.782	\$228	3,4%	\$6.089	921
	1700 TEU		\$9.291	\$9.082	\$209	↗ 2,3%	\$8.805	\$486	5,5%	\$6.467	2.824
	2500 TEU	24 mos	\$10.163	\$10.040	\$123	↗ 1,2%	\$9.968	\$195	2,0%	\$6.745	3.418
	2700 TEU		\$10.160	\$10.040	\$120	↗ 1,2%	\$10.121	\$39	0,4%	\$7.034	3.126
	3500 TEU		\$9.884	\$9.775	\$109	↗ 1,1%	\$9.467	\$417	4,4%	\$6.596	3.288
	4250 TEU		\$9.820	\$9.648	\$172	↗ 1,8%	\$9.398	\$422	4,5%	\$6.415	3.405
	2500 TEU	12 mos	\$9.309	\$9.169	\$140	↗ 1,5%	\$8.970	\$339	3,8%	\$5.786	3.523
	2700 TEU		\$9.265	\$9.144	\$121	↗ 1,3%	\$9.137	\$128	1,4%	\$6.123	3.142
	3500 TEU		\$8.937	\$8.760	\$177	↗ 2,0%	\$8.392	\$545	6,5%	\$5.325	3.612
	4250 TEU		\$8.407	\$8.155	\$252	↗ 3,1%	\$7.861	\$546	6,9%	\$4.198	4.209



Disclaimer

The brand NewConTex is copyrighted by Vereinigung Hamburger Schiffsmakler und Schiffsagenten e. V. ("VHSS e.V.") and is protected by law. The NewConTex may be published only with the source reference © VHSS e.V. It is distributed to the general public for information purposes only and cannot be relied upon as a trading recommendation and does not constitute a solicitation to trade. The reported information is obtained from market sources. While every effort has been made to ensure the accuracy and the completeness of the NewConTex, VHSS e.V. makes no representations, conditions or warranties of any kind, express or implied, about the completeness, accuracy, reliability, or suitability of the NewConTex. Any reliance you place on the NewConTex is therefore strictly at your own risk. Neither VHSS e.V. nor any of its subsidiaries or affiliates nor any employee of the foregoing shall be liable or have any responsibility for any loss, liability or damage, cost or expense including without limitation, indirect or consequential loss or damage, or any loss or damage whatsoever arising from loss of data or profits arising out of, or in connection with, the use of and the reliance on the NewConTex, save for death or personal injury arising from VHSS e.V. negligence and fraudulent misrepresentation that cannot, under German law, be excluded.