



## New ConTex Container Ship Time Charter Assessment Index

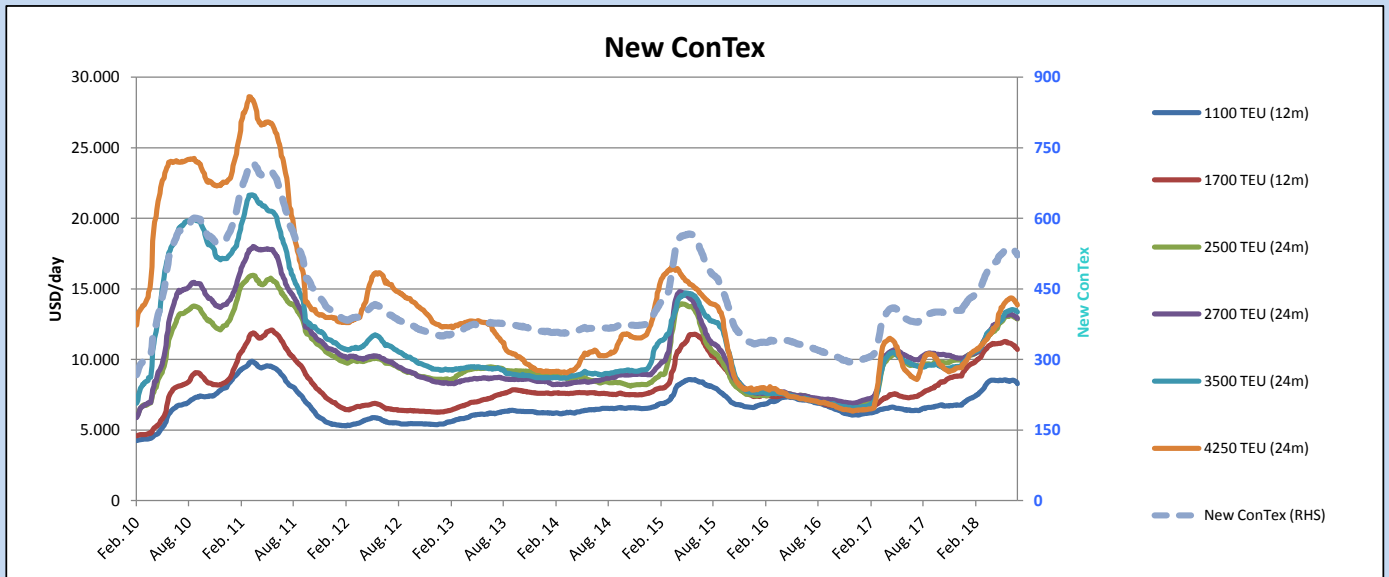
New ConTex*		522	
		19.07.18	12 mos
Gearless	1100 TEU	\$8.292	n.a.
	1700 TEU	\$10.718	
	2500 TEU	\$11.994	\$12.869
Gearless	2700 TEU	\$11.991	\$12.898
	3500 TEU	\$12.377	\$13.358
	4250 TEU	\$12.839	\$13.862

Legend		
↑	up	+ 2% or more
↗	steady up	from +1% to +1,9%
→	steady	+/- 1%
↘	steady down	from -1% to -1,9%
↓	down	- 2% or less

\*New ConTex evaluation is EXCLUDING 2500/2700/3500/4250 TEU groups for 12 months period

New ConTex-Commentary - issued:	19.07.18
<p>For the second week in a row the New ConTex lost ground, closing at 522 points. All segments suffered losses between 0.6% and 2.0%. The biggest drop over the past week came from the 1,100 TEU segment but also the 3,500 TEU class, which last week remained on a relative stable level, started to move southwards. The rates of these vessels decreased 1.4% to \$12,377 per day over a period of 12 months. The Panamax sector of 4,250 TEU lost 1.5% which corresponds to approximately \$200.</p> <p>The declining demand for tonnage due to the traditionally quieter summer season will most likely continue to put the charter market under pressure in the coming weeks.</p> <p>In addition, the rate of unemployed vessels increased in almost all segments. Service cutbacks on the Transpacific and the Middle East route lead to a rising idle fleet. According to Alphaliner, 122 vessels with a capacity of about 315,000 TEU are classified as "idle", which corresponds to 2,3% of the total cellular fleet. It is expected that more ships will become "idle" over the next few weeks.</p>	

		New ConTex Development									
Vessel type	Evaluated Period	Today	Week-on-Week		Month-on-Month		Year-on-Year				
		19.07.18	12.07.18	Change	Change	19.06.18	Change	Change	18.07.17	Change	Change
<b>New ConTex*</b>		<b>522</b>	529	-7	↓ -1,3%	534	-12	↓ -2,2%	381	141	37,0%
New ConTex	1100 TEU	\$8.292	\$8.465	-\$173	↓ -2,0%	\$8.467	-\$175	↓ -2,1%	\$6.384	1.908	29,9%
	1700 TEU	\$10.718	\$10.865	-\$147	↓ -1,4%	\$11.159	-\$441	↓ -4,0%	\$7.336	3.382	46,1%
	2500 TEU	\$12.869	\$12.959	-\$90	↓ -0,7%	\$13.050	-\$181	↓ -1,4%	\$9.601	3.268	34,0%
	2700 TEU	\$12.898	\$13.051	-\$153	↓ -1,2%	\$13.155	-\$257	↓ -2,0%	\$10.047	2.851	28,4%
	3500 TEU	\$13.358	\$13.498	-\$140	↓ -1,0%	\$13.425	-\$67	↓ -0,5%	\$9.658	3.700	38,3%
	4250 TEU	\$13.862	\$14.097	-\$235	↓ -1,7%	\$14.237	-\$375	↓ -2,6%	\$8.786	5.076	57,8%
	2500 TEU	\$11.994	\$12.071	-\$77	↓ -0,6%	\$12.195	-\$201	↓ -1,6%	\$8.566	3.428	40,0%
	2700 TEU	\$11.991	\$12.153	-\$162	↓ -1,3%	\$12.245	-\$254	↓ -2,1%	\$9.029	2.962	32,8%
	3500 TEU	\$12.377	\$12.555	-\$178	↓ -1,4%	\$12.465	-\$88	↓ -0,7%	\$8.404	3.973	47,3%
	4250 TEU	\$12.839	\$13.030	-\$191	↓ -1,5%	\$13.202	-\$363	↓ -2,7%	\$7.316	5.523	75,5%



**Disclaimer**

The brand NewConTex is copyrighted by Vereinigung Hamburger Schiffsmakler und Schiffsagenten e.V. ("VHSS e.V.") and is protected by law. The NewConTex may be published only with the source reference © VHSS e.V. It is distributed to the general public for information purposes only and cannot be relied upon as a trading recommendation and does not constitute a solicitation to trade. The reported information is obtained from market sources. While every effort has been made to ensure the accuracy and the completeness of the NewConTex, VHSS e.V. makes no representations, conditions or warranties of any kind, express or implied, about the completeness, accuracy, reliability, or suitability of the NewConTex. Any reliance you place on the NewConTex is therefore strictly at your own risk. Neither VHSS e.V. nor any of its subsidiaries or affiliates nor any employee of the foregoing shall be liable or have any responsibility for any loss, liability or damage, cost or expense including without limitation, indirect or consequential loss or damage, or any loss or damage whatsoever arising from loss of data or profits arising out of, or in connection with, the use of and the reliance on the NewConTex, save for death or personal injury arising from VHSS e.V. negligence and fraudulent misrepresentation that cannot, under German law, be excluded.