

# Hamburg and Bremen Shipbrokers' Association (VHBS)

## New ConTex Container Ship Time Charter Assessment Index

New ConTex*		529	
12.07.18		12 mos	24 mos
Gearless	1100 TEU	\$8,465	n.a.
	1700 TEU	\$10,865	
	2500 TEU	\$12,071	\$12,959
	2700 TEU	\$12,153	\$13,051
	3500 TEU	\$12,555	\$13,498
	4250 TEU	\$13,030	\$14,097

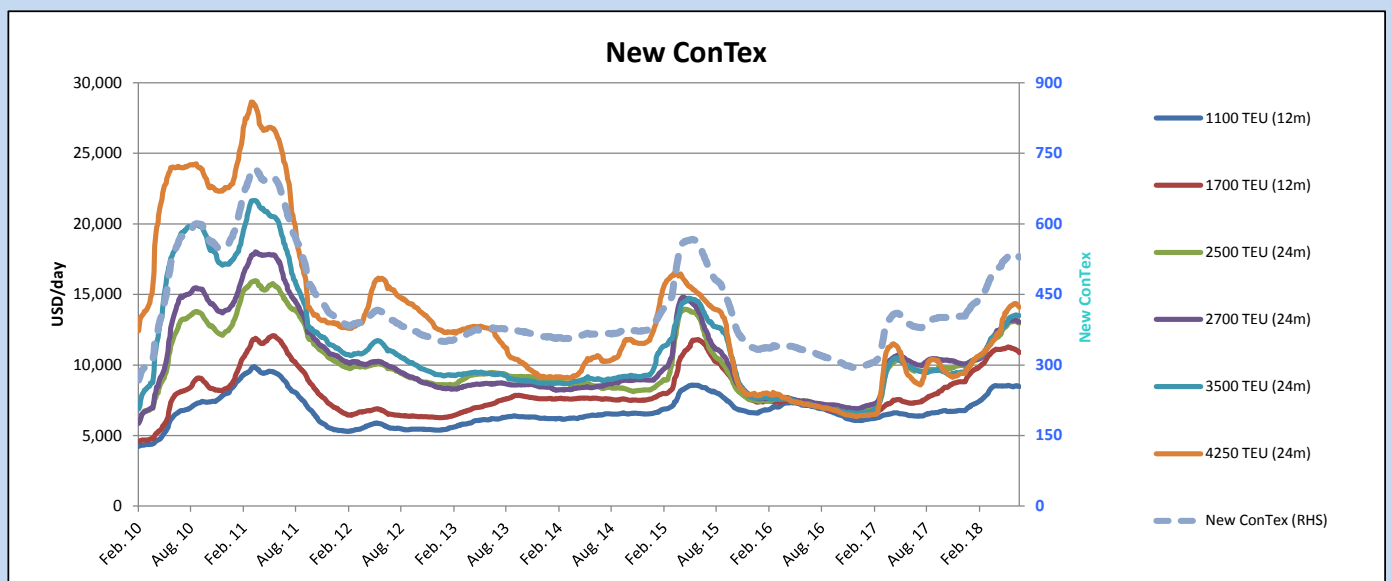
Legend		
↑	up	+ 2% or more
↗	steady up	from +1% to +1,9%
→	steady	+/- 1 %
↘	steady down	from -1% to -1,9%
↓	down	- 2% or less

\*New ConTex evaluation is EXCLUDING 2500/2700/3500/4250 TEU groups for 12 months period

New ConTex-Commentary - issued:	12.07.18
<p>A slowed down charter market activity due to the usual summer slack season as well as an increasing supply of tonnage in some segments started to impact the New ConTex after moving sideways for weeks. The New ConTex finished this week at 529 losing 5 index points. Supply/demand ratio in some groups changed slightly to the advantage of the Charterers, because requirements were limited and more tonnage was looking for employment. The 1700 TEU segment is one of the affected classes and also registered this week's strongest loss, decreasing by 1.5% w-o-w (basis 12 months evaluation). Except from the 3500 TEU segment which managed to stay more or less in line with last week, all other segments lost some ground within a range of 0.6% - 0.9% w-o-w (basis 12 months evaluation).</p> <p>Overall the market trend is in line with the summer season. Compared to a year ago the container market is on a much healthier level and is presently 38.5% above 2017. Also the supply situation looks much more promising than last year. According to Alphaliner, at the end of June, 2% of the global container fleet was unemployed in contrast to 3.9% last year. The subdued market activity and a further softening of rates are expected to stay the same for the coming weeks but will then hopefully pick up again, when the traditional peak season kicks in.</p>	

### New ConTex Development

Vessel type	Evaluated Period	Today 12.07.18	Week-on-Week		Month-on-Month			Year-on-Year			
			05.07.18	Change	Change	12.06.18	Change	Change	11.07.17	Change	Change
<b>New ConTex*</b>		<b>529</b>	534	-5	↔ -0.9%	535	-6	↘ -1.1%	382	147	38.5%
New ConTex	1100 TEU	\$8,465	\$8,543	-\$78	↘ -0.9%	\$8,523	-\$58	↘ -0.7%	\$6,414	2,051	32.0%
	1700 TEU	\$10,865	\$11,028	-\$163	↘ -1.5%	\$11,245	-\$380	↘ -3.4%	\$7,297	3,568	48.9%
	2500 TEU	\$12,959	\$13,050	-\$91	↘ -0.7%	\$13,069	-\$110	↘ -0.8%	\$9,570	3,389	35.4%
	2700 TEU	\$13,051	\$13,133	-\$82	↘ -0.6%	\$13,165	-\$114	↘ -0.9%	\$10,134	2,917	28.8%
	3500 TEU	\$13,498	\$13,530	-\$32	↘ -0.2%	\$13,384	\$114	↗ 0.9%	\$9,728	3,770	38.8%
	4250 TEU	\$14,097	\$14,274	-\$177	↘ -1.2%	\$14,178	-\$81	↘ -0.6%	\$8,887	5,210	58.6%
	2500 TEU	\$12,071	\$12,139	-\$68	↘ -0.6%	\$12,194	-\$123	↘ -1.0%	\$8,569	3,502	40.9%
	2700 TEU	\$12,153	\$12,246	-\$93	↘ -0.8%	\$12,215	-\$62	↘ -0.5%	\$9,091	3,062	33.7%
	3500 TEU	\$12,555	\$12,578	-\$23	↘ -0.2%	\$12,410	\$145	↗ 1.2%	\$8,508	4,047	47.6%
	4250 TEU	\$13,030	\$13,139	-\$109	↘ -0.8%	\$13,230	-\$200	↘ -1.5%	\$7,392	5,638	76.3%



Disclaimer

The brand NewConTex is copyrighted by Verband Hamburger und Bremer Schiffsmakler e.V. ("VHBS e.V.") and is protected by law. The NewConTex may be published only with the source reference © VHBS e.V. It is distributed to the general public for information purposes only and cannot be relied upon as a trading recommendation and does not constitute a solicitation to trade. The reported information is obtained from market sources. While every effort has been made to ensure the accuracy and the completeness of the NewConTex, VHBS e.V. makes no representations, conditions or warranties of any kind, express or implied, about the completeness, accuracy, reliability, or suitability of the NewConTex. Any reliance you place on the NewConTex is therefore strictly at your own risk. Neither VHBS e.V. nor any of its subsidiaries or affiliates nor any employee of the foregoing shall be liable or have any responsibility for any loss, liability or damage, cost or expense including without limitation, indirect or consequential loss or damage, or any loss or damage whatsoever arising from loss of data or profits arising out of, or in connection with, the use of and the reliance on the NewConTex, save for death or personal injury arising from VHBS e.V. negligence and fraudulent misrepresentation that cannot, under German law, be excluded.