



New ConTex Container Ship Time Charter Assessment Index

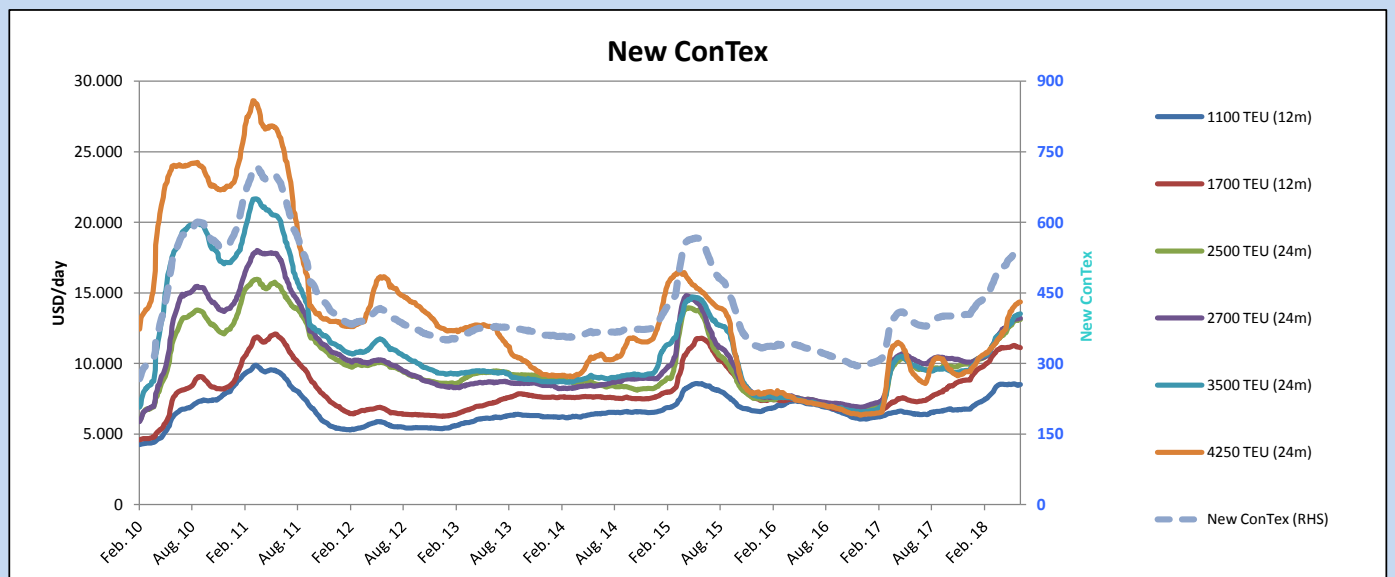
New ConTex*		535	
28.06.18		12 mos	24 mos
Gearless	1100 TEU	\$8.509	n.a.
	1700 TEU	\$11.113	
	2500 TEU	\$12.200	
Gearless	2700 TEU	\$12.289	\$13.197
	3500 TEU	\$12.551	\$13.516
	4250 TEU	\$13.226	\$14.363

Legend		
↑	up	+ 2% or more
↗	steady up	from +1% to +1,9%
→	steady	+/- 1 %
↘	steady down	from -1% to -1,9%
↓	down	- 2% or less

*New ConTex evaluation is EXCLUDING
2500/2700/3500/4250 TEU groups for
12 months period

New ConTex-Commentary - issued:		28.06.18
<p>After two weeks of standstill the larger sizes again managed to achieve a gain of one point for the New ConTex. The smaller sizes are faring as well as the 1700 TEU category has now decreased slightly for the third week in a row and despite being positive this week the 1100 TEU segment is on a month-on-months basis still marginally negative.</p> <p>Relatively high bunker prices combined with moderate freight rates, however continue to pressure the liner operators. As a consequence a few unprofitable service might be revised or closed. This development looks to mainly effect the 2500 TEU+ sizes.</p> <p>Charter rate differences could also start to reappear as currently availability of the larger sizes is greater in the Pacific than in the Atlantic.</p> <p>The positive expectations for the mid term future do not vary much between the various ship sizes as the 24 months rates for 2500/2800/3500 TEU are all valued at about 7.5% above the 12 months rates, whereas the difference in the 4250 TEU category is just a touch higher at 8.5%.</p>		

			New ConTex Development										
Vessel type	Evaluated Period	Today	Week-on-Week				Month-on-Month			Year-on-Year			
		28.06.18	21.06.18	Change	Change	29.05.18	Change	Change	27.06.17	Change	Change		
New ConTex*		535	534	1	➡	0,2%	526	9	1,7%	386	149	38,6%	
New ConTex	1100 TEU	12 mos	\$8.509	\$8.446	\$63	➡	0,7%	\$8.519	-\$10	-0,1%	\$6.402	2.107	32,9%
	1700 TEU		\$11.113	\$11.160	-\$47	➡	-0,4%	\$11.216	-\$103	-0,9%	\$7.297	3.816	52,3%
	2500 TEU	24 mos	\$13.113	\$13.102	\$11	➡	0,1%	\$12.727	\$386	3,0%	\$9.774	3.339	34,2%
	2700 TEU		\$13.197	\$13.173	\$24	➡	0,2%	\$12.966	\$231	1,8%	\$10.259	2.938	28,6%
	3500 TEU		\$13.516	\$13.472	\$44	➡	0,3%	\$12.867	\$649	5,0%	\$9.841	3.675	37,3%
	4250 TEU		\$14.363	\$14.308	\$55	➡	0,4%	\$13.730	\$633	4,6%	\$9.190	5.173	56,3%
	2500 TEU	12 mos	\$12.200	\$12.203	-\$3	➡	0,0%	\$11.915	\$285	2,4%	\$8.793	3.407	38,7%
	2700 TEU		\$12.289	\$12.254	\$35	➡	0,3%	\$12.045	\$244	2,0%	\$9.287	3.002	32,3%
	3500 TEU		\$12.551	\$12.491	\$60	➡	0,5%	\$12.010	\$541	4,5%	\$8.738	3.813	43,6%
	4250 TEU		\$13.226	\$13.210	\$16	➡	0,1%	\$12.668	\$558	4,4%	\$7.756	5.470	70,5%



Disclaimer

The brand NewConTex is copyrighted by Vereinigung Hamburger Schiffsmakler und Schiffsagenten e.V. ("VHSS e.V.") and is protected by law. The NewConTex may be published only with the source reference © VHSS e.V. It is distributed to the general public for information purposes only and cannot be relied upon as a trading recommendation and does not constitute a solicitation to trade. The reported information is obtained from market sources. While every effort has been made to ensure the accuracy and the completeness of the NewConTex, VHSS e.V. makes no representations, conditions or warranties of any kind, express or implied, about the completeness, accuracy, reliability, or suitability of the NewConTex. Any reliance you place on the NewConTex is therefore strictly at your own risk. Neither VHSS e.V. nor any of its subsidiaries or affiliates nor any employee of the foregoing shall be liable or have any responsibility for any loss, liability or damage, cost or expense including without limitation, indirect or consequential loss or damage, or any loss or damage whatsoever arising from loss of data or profits arising out of, or in connection with, the use of and the reliance on the NewConTex, save for death or personal injury arising from VHSS e.V. negligence and fraudulent misrepresentation that cannot, under German law, be excluded.