



## New ConTex Container Ship Time Charter Assessment Index

New ConTex*		534	
14.06.18		12 mos	24 mos
Geared	1100 TEU	\$8.486	n.a.
	1700 TEU	\$11.190	
	2500 TEU	\$12.213	
Gearless	2700 TEU	\$12.260	\$13.175
	3500 TEU	\$12.450	\$13.406
	4250 TEU	\$13.191	\$14.194

Legend		
↑	up	+ 2% or more
↗	steady up	from +1% to +1,9%
→	steady	+/- 1 %
↘	steady down	from -1% to -1,9%
↓	down	- 2% or less

\*New ConTex evaluation is EXCLUDING  
2500/2700/3500/4250 TEU groups for  
12 months period

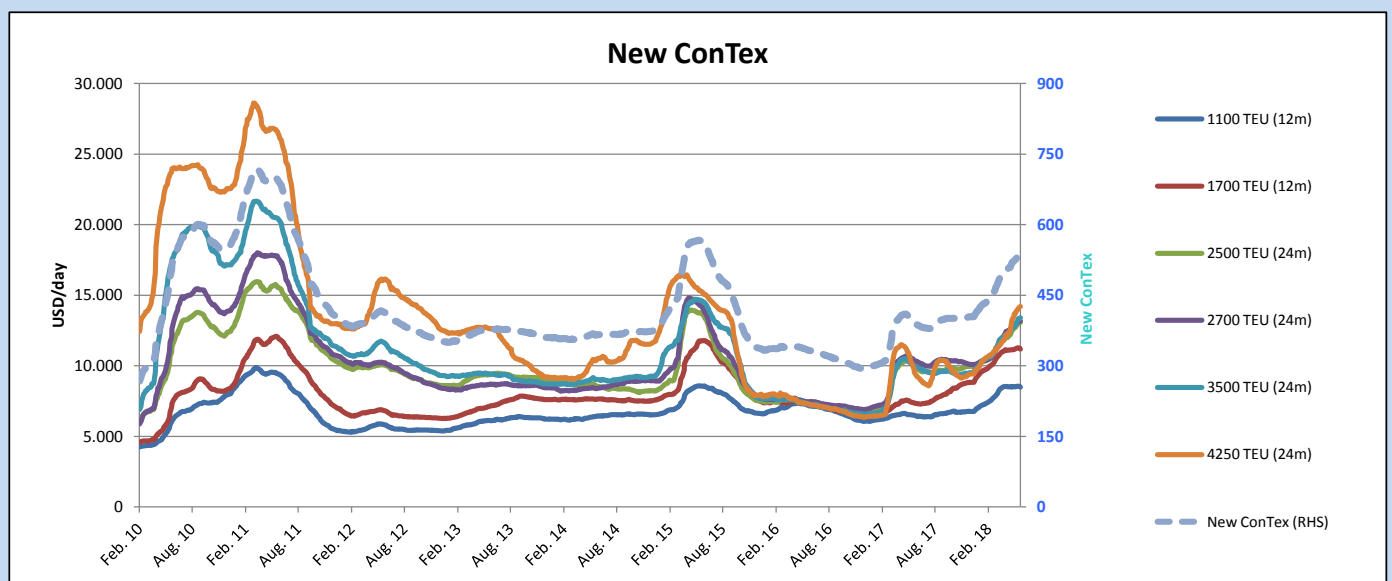
### New ConTex-Commentary - issued:

14.06.18

The container charter market has taken a little breather during the last week, we still try to find out if the post Posidonia blues is still taking its toll, but the majority of people should have recovered. Although it was a quieter week in numbers of transactions concluded, the momentum within the majority of segments is still good. In short, it is quieter but firm. With the overall relatively limited supply of available tonnage within the most segments, gains can be registered in all New ConTex segments of the sizes 2500 TEU and larger. Although we monitor a relatively homogenous increase, the biggest winner this week is the 4250 TEU segment increased by 1,0% closing at USD 14.194 followed by the 3500 gaining 0,6% week on week. With the so far still prevailing positive sentiment we do believe to experience a further solid market.

### New ConTex Development

Vessel type		Evaluated Period	Today	Week-on-Week				Month-on-Month				Year-on-Year		
			14.06.18	07.06.18	Change		Change	15.05.18	Change		Change	13.06.17	Change	Change
New ConTex*			534	534	0	→	0,0%	518	16	3,1%		394	140	35,5%
New ConTex	1100 TEU	12 mos	\$8.486	\$8.544	-\$58	↘	-0,7%	\$8.490	-\$4	0,0%		\$6.491	1.995	30,7%
	1700 TEU		\$11.190	\$11.269	-\$79	↘	-0,7%	\$11.149	\$41	0,4%		\$7.375	3.815	51,7%
	2500 TEU		\$13.065	\$13.016	\$49	↗	0,4%	\$12.462	\$603	4,8%		\$10.043	3.022	30,1%
	2700 TEU	24 mos	\$13.175	\$13.121	\$54	↗	0,4%	\$12.813	\$362	2,8%		\$10.388	2.787	26,8%
	3500 TEU		\$13.406	\$13.330	\$76	↗	0,6%	\$12.648	\$758	6,0%		\$10.009	3.397	33,9%
	4250 TEU		\$14.194	\$14.048	\$146	↗	1,0%	\$13.199	\$995	7,5%		\$9.731	4.463	45,9%
	2500 TEU	12 mos	\$12.213	\$12.171	\$42	↗	0,3%	\$11.611	\$602	5,2%		\$9.138	3.075	33,7%
	2700 TEU		\$12.260	\$12.188	\$72	↗	0,6%	\$11.785	\$475	4,0%		\$9.497	2.763	29,1%
	3500 TEU		\$12.450	\$12.354	\$96	↗	0,8%	\$11.644	\$806	6,9%		\$8.932	3.518	39,4%
	4250 TEU		\$13.191	\$13.115	\$76	↗	0,6%	\$12.057	\$1.134	9,4%		\$8.364	4.827	57,7%



Disclaimer

The brand NewConTex is copyrighted by Vereinigung Hamburger Schiffsmakler und Schiffsagenten e.V. ("VHSS e.V.") and is protected by law. The NewConTex may be published only with the source reference © VHSS e.V. It is distributed to the general public for information purposes only and cannot be relied upon as a trading recommendation and does not constitute a solicitation to trade. The reported information is obtained from market sources. While every effort has been made to ensure the accuracy and the completeness of the NewConTex, VHSS e.V. makes no representations, conditions or warranties of any kind, express or implied, about the completeness, accuracy, reliability, or suitability of the NewConTex. Any reliance you place on the NewConTex is therefore strictly at your own risk. Neither VHSS e.V. nor any of its subsidiaries or affiliates nor any employee of the foregoing shall be liable or have any responsibility for any loss, liability or damage, cost or expense including without limitation, indirect or consequential loss or damage, or any loss or damage whatsoever arising from loss of data or profits arising out of, or in connection with, the use of and the reliance on the NewConTex, save for death or personal injury arising from VHSS e.V. negligence and fraudulent misrepresentation that cannot, under German law, be excluded.