



New ConTex Container Ship Time Charter Assessment Index

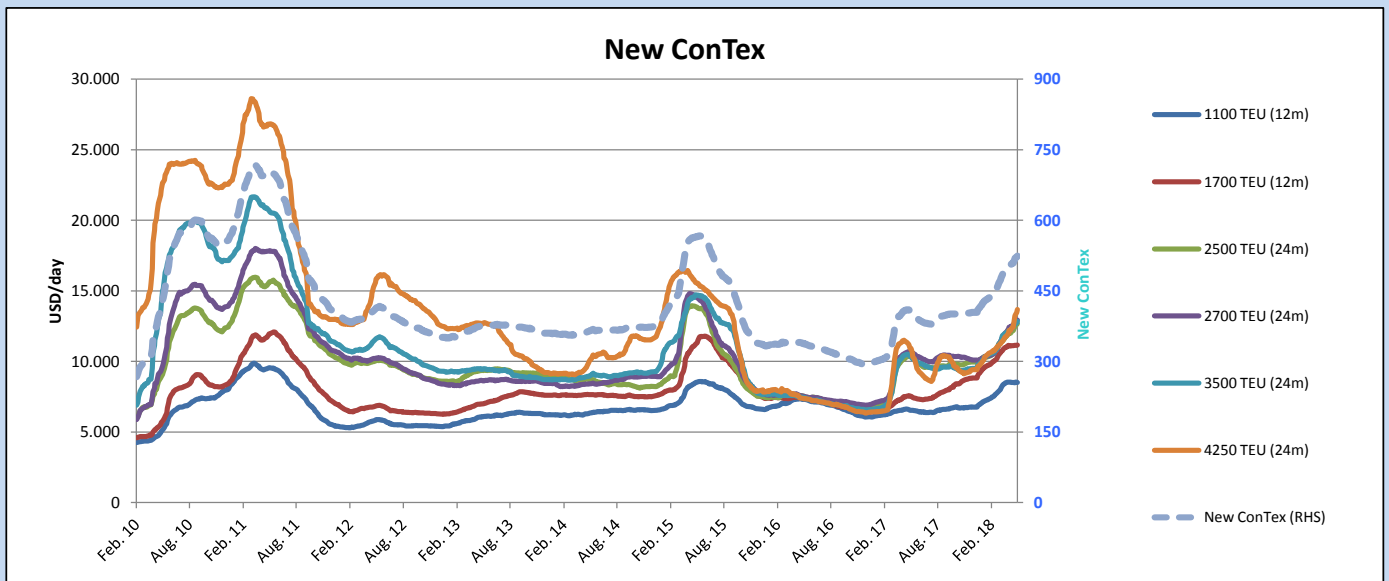
New ConTex*		524	
		12 mos	24 mos
Gearing	1100 TEU	\$8.518	n.a.
	1700 TEU	\$11.170	
	2500 TEU	\$11.858	
Gearless	2700 TEU	\$11.991	\$12.929
	3500 TEU	\$11.940	\$12.830
	4250 TEU	\$12.625	\$13.688

Legend		
↑	up	+ 2% or more
↔	steady up	from +1% to +1,9%
↔	steady	+/- 1%
↔	steady down	from -1% to -1,9%
↓	down	- 2% or less

*New ConTex evaluation is EXCLUDING 2500/2700/3500/4250 TEU groups for 12 months period

New ConTex-Commentary - issued:	24.05.18
<p>The New ConTex remained steady with a marginal improvement of nearly 1 pct compared to last week. The smaller feeder segments in general concluded numbers which were in line with previous weeks and enjoy stable market conditions. The upward trend was created by the panamax vessels of 4250 TEU up by 3,2 pct in just a week as well as the 3500 TEU vessel which enjoyed fresh demand in both Asia and in the Atlantic. Contrary to earlier in the year it is now owners trying to ensure employment for longer periods and with the charterers resisting and aiming for shorter periods with both the charter and increased bunker cost influencing how the services are structured. Still the sentiment for the coming month is positive and the New ConTex is expected to remain steady for a while.</p>	

New ConTex Development													
Vessel type	Evaluated Period	Today	Week-on-Week				Month-on-Month			Year-on-Year			
			24.05.18	17.05.18	Change	Change	24.04.18	Change	Change	23.05.17	Change	Change	
New ConTex*		524	520	4	↔	0,8%	503	21	4,2%	407	117	28,7%	
New ConTex	1100 TEU	12 mos	\$8.518	\$8.521	-\$3	↔	0,0%	\$8.528	-\$10	-0,1%	\$6.543	1.975	30,2%
	1700 TEU		\$11.170	\$11.150	\$20	↔	0,2%	\$11.134	\$36	0,3%	\$7.538	3.632	48,2%
	2500 TEU	24 mos	\$12.672	\$12.563	\$109	↔	0,9%	\$11.928	\$744	6,2%	\$10.317	2.355	22,8%
	2700 TEU		\$12.929	\$12.877	\$52	↔	0,4%	\$12.293	\$636	5,2%	\$10.647	2.282	21,4%
	3500 TEU		\$12.830	\$12.658	\$172	↔	1,4%	\$12.135	\$695	5,7%	\$10.336	2.494	24,1%
4250 TEU		\$13.688	\$13.267	\$421	↑	3,2%	\$12.011	\$1.677	14,0%	\$10.920	2.768	25,3%	
2500 TEU	12 mos	\$11.858	\$11.744	\$114	↔	1,0%	\$10.938	\$920	8,4%	\$9.439	2.419	25,6%	
2700 TEU		\$11.991	\$11.918	\$73	↔	0,6%	\$11.312	\$679	6,0%	\$9.690	2.301	23,7%	
3500 TEU		\$11.940	\$11.713	\$227	↔	1,9%	\$10.991	\$949	8,6%	\$9.257	2.683	29,0%	
4250 TEU		\$12.625	\$12.307	\$318	↑	2,6%	\$10.802	\$1.823	16,9%	\$9.306	3.319	35,7%	



Disclaimer

The brand NewConTex is copyrighted by Vereinigung Hamburger Schiffsmakler und Schiffsagenten e. V. ("VHSS e.V.") and is protected by law. The NewConTex may be published only with the source reference © VHSS e.V. It is distributed to the general public for information purposes only and cannot be relied upon as a trading recommendation and does not constitute a solicitation to trade. The reported information is obtained from market sources. While every effort has been made to ensure the accuracy and the completeness of the NewConTex, VHSS e.V. makes no representations, conditions or warranties of any kind, express or implied, about the completeness, accuracy, reliability, or suitability of the NewConTex. Any reliance you place on the NewConTex is therefore strictly at your own risk. Neither VHSS e.V. nor any of its subsidiaries or affiliates nor any employee of the foregoing shall be liable or have any responsibility for any loss, liability or damage, cost or expense including without limitation, indirect or consequential loss or damage, or any loss or damage whatsoever arising from loss of data or profits arising out of, or in connection with, the use of and the reliance on the NewConTex, save for death or personal injury arising from VHSS e.V. negligence and fraudulent misrepresentation that cannot, under German law, be excluded.