



## New ConTex Container Ship Time Charter Assessment Index

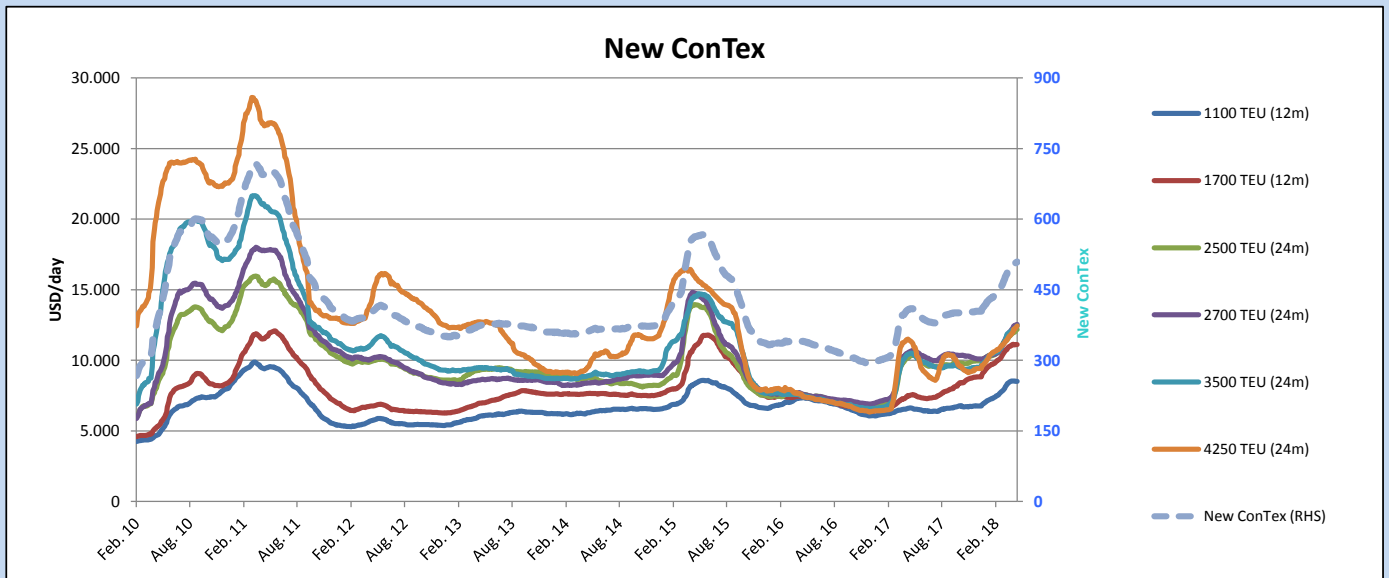
New ConTex*		509	
		08.05.18	12 mos
Gearing	1100 TEU	\$8.510	n.a.
	1700 TEU	\$11.107	
	2500 TEU	\$11.299	\$12.172
Gearless	2700 TEU	\$11.537	\$12.537
	3500 TEU	\$11.368	\$12.429
	4250 TEU	\$11.307	\$12.438

Legend		
↑	up	+ 2% or more
↗	steady up	from +1% to +1,9%
→	steady	+/- 1%
↘	steady down	from -1% to -1,9%
↓	down	- 2% or less

\*New ConTex evaluation is EXCLUDING 2500/2700/3500/4250 TEU groups for 12 months period

New ConTex-Commentary - issued:	08.05.18
<p>In quiet trading conditions (with so many public holidays around the Globe) the New ConTex Index managed a two point rise to stand at 509.</p> <p>Apart from some slight weakness in the smaller feeders (1100 TEUs and 1700 TEUs) all the other sizes tracked by the Index posted gains: the classical 4250 TEU panamaxs powered ahead, making a further 1.4% since last week (basis 12 months). The 3500 TEUs were not far behind, gaining 1.2% since last week (basis both 12 and 24 months). The other ship sizes were marked up generally between 0.4 and 1.0% since last week.</p> <p>With further public holidays this week trading conditions are likely to be calm, with hopefully a return to full speed ahead next week.</p>	

		New ConTex Development										
Vessel type	Evaluated Period	Today	Week-on-Week		Month-on-Month			Year-on-Year				
		08.05.18	03.05.18	Change	Change	10.04.18	Change	Change	09.05.17	Change	Change	
<b>New ConTex*</b>		<b>509</b>	507	2	↗	0,4%	492	17	3,5%	410	99	24,1%
New ConTex	1100 TEU	\$8.510	\$8.515	-\$5	↘	-0,1%	\$8.428	\$82	1,0%	\$6.619	1.891	28,6%
	1700 TEU	\$11.107	\$11.110	-\$3	↘	0,0%	\$10.949	\$158	1,4%	\$7.507	3.600	48,0%
	2500 TEU	\$12.172	\$12.109	\$63	↗	0,5%	\$11.647	\$525	4,5%	\$10.303	1.869	18,1%
	2700 TEU	\$12.537	\$12.490	\$47	↗	0,4%	\$11.918	\$619	5,2%	\$10.627	1.910	18,0%
	3500 TEU	\$12.429	\$12.284	\$145	↗	1,2%	\$11.948	\$481	4,0%	\$10.488	1.941	18,5%
	4250 TEU	\$12.438	\$12.297	\$141	↗	1,1%	\$11.667	\$771	6,6%	\$11.394	1.044	9,2%
	2500 TEU	\$11.299	\$11.152	\$147	↗	1,3%	\$10.678	\$621	5,8%	\$9.426	1.873	19,9%
	2700 TEU	\$11.537	\$11.484	\$53	↗	0,5%	\$10.931	\$606	5,5%	\$9.623	1.914	19,9%
	3500 TEU	\$11.368	\$11.232	\$136	↗	1,2%	\$10.727	\$641	6,0%	\$9.480	1.888	19,9%
	4250 TEU	\$11.307	\$11.147	\$160	↗	1,4%	\$10.385	\$922	8,9%	\$9.903	1.404	14,2%



**Disclaimer**

The brand NewConTex is copyrighted by Vereinigung Hamburger Schiffsmakler und Schiffsagenten e. V. ("VHSS e.V.") and is protected by law. The NewConTex may be published only with the source reference © VHSS e.V. It is distributed to the general public for information purposes only and cannot be relied upon as a trading recommendation and does not constitute a solicitation to trade. The reported information is obtained from market sources. While every effort has been made to ensure the accuracy and the completeness of the NewConTex, VHSS e.V. makes no representations, conditions or warranties of any kind, express or implied, about the completeness, accuracy, reliability, or suitability of the NewConTex. Any reliance you place on the NewConTex is therefore strictly at your own risk. Neither VHSS e.V. nor any of its subsidiaries or affiliates nor any employee of the foregoing shall be liable or have any responsibility for any loss, liability or damage, cost or expense including without limitation, indirect or consequential loss or damage, or any loss or damage whatsoever arising from loss of data or profits arising out of, or in connection with, the use of and the reliance on the NewConTex, save for death or personal injury arising from VHSS e.V. negligence and fraudulent misrepresentation that cannot, under German law, be excluded.