



New ConTex Container Ship Time Charter Assessment Index

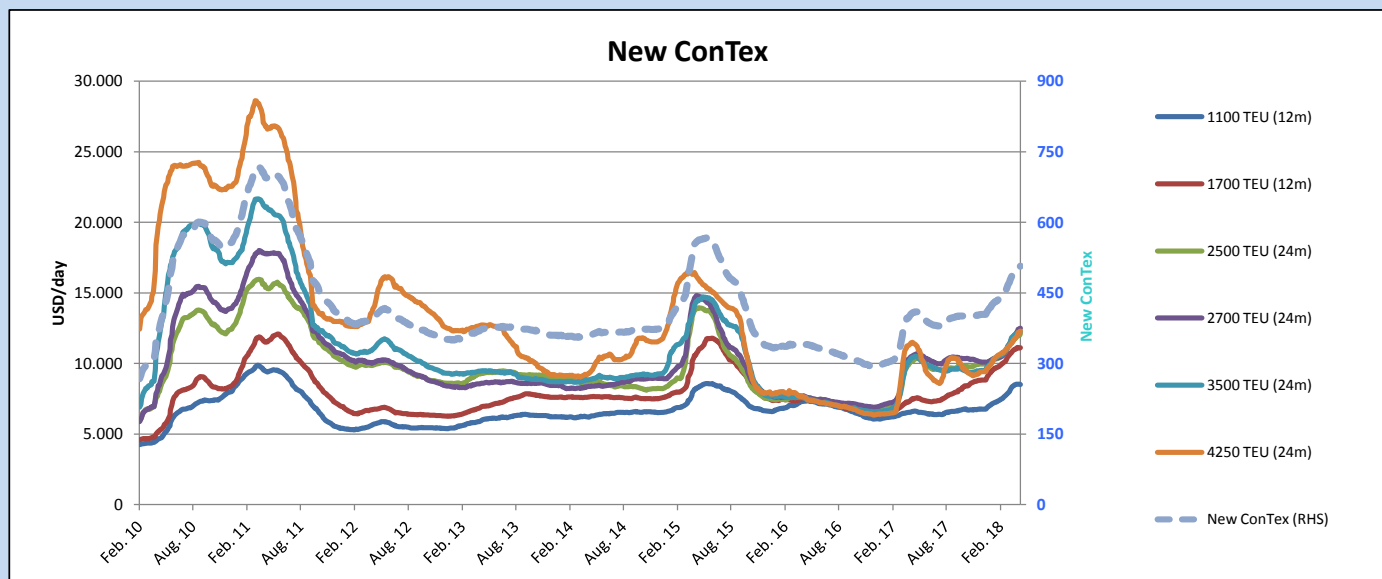
New ConTex*		507	
03.05.18		12 mos	24 mos
Gearless	1100 TEU	\$8.515	n.a.
	1700 TEU	\$11.110	
	2500 TEU	\$11.152	
Gearless	2700 TEU	\$11.484	\$12.490
	3500 TEU	\$11.232	\$12.284
	4250 TEU	\$11.147	\$12.297

Legend		
↑	up	+ 2% or more
↗	steady up	from +1% to +1,9%
→	steady	+/- 1 %
↘	steady down	from -1% to -1,9%
↓	down	- 2% or less

*New ConTex evaluation is EXCLUDING
2500/2700/3500/4250 TEU groups for
12 months period

New ConTex-Commentary - issued:		03.05.18
Whilst the ConTex improved during the last 2 weeks by 5 points each week this week we have "only" seen an improvement of 2 points to finally 507 in week 18.		
The main reason seems to be that the changes in the 1100 and 1700 Teu segments were only marginal. Similar to last week the 1100 Teu was slightly negative (-0,1%) whilst the 1700 Teu remained in black, but with only 0,1% up.		
The shortage of tonnage in the sizes of 2500, 2700 and 3500 Teu seems to continue and consequently owners are still obtaining improved numbers and/or even longer durations to last done.		
The "Panamax" sector of 4250 Teu is also remaining firm with improvements of 1,7% for 1 year and 0,7% for 2 years during this weeks evaluation.		
Compared to a month ago the Index moved almost 5% up and on YoY basis even almost 25%.		
Despite a couple of holidays around the globe coming up in May, it is likely that this weeks general trend may continue even during the next weeks.		

			New ConTex Development								
Vessel type	Evaluated Period	Today	Week-on-Week			Month-on-Month			Year-on-Year		
		03.05.18	26.04.18	Change	Change	03.04.18	Change	Change	02.05.17	Change	Change
New ConTex*		507	505	2	➡ 0,4%	484	23	4,8%	408	99	24,3%
New ConTex	1100 TEU	12 mos	\$8.515	\$8.522	-\$7 ➡ -0,1%	\$8.277	\$238	2,9%	\$6.604	1.911	28,9%
	1700 TEU		\$11.110	\$11.095	\$15 ➡ 0,1%	\$10.754	\$356	3,3%	\$7.509	3.601	48,0%
	2500 TEU		\$12.109	\$11.995	\$114 ➡ 1,0%	\$11.444	\$665	5,8%	\$10.181	1.928	18,9%
	2700 TEU	24 mos	\$12.490	\$12.438	\$52 ➡ 0,4%	\$11.716	\$774	6,6%	\$10.526	1.964	18,7%
	3500 TEU		\$12.284	\$12.213	\$71 ➡ 0,6%	\$11.813	\$471	4,0%	\$10.439	1.845	17,7%
	4250 TEU		\$12.297	\$12.211	\$86 ➡ 0,7%	\$11.414	\$883	7,7%	\$11.508	789	6,9%
	2500 TEU	12 mos	\$11.152	\$10.981	\$171 ➡ 1,6%	\$10.496	\$656	6,3%	\$9.310	1.842	19,8%
	2700 TEU		\$11.484	\$11.428	\$56 ➡ 0,5%	\$10.652	\$832	7,8%	\$9.537	1.947	20,4%
	3500 TEU		\$11.232	\$11.106	\$126 ➡ 1,1%	\$10.534	\$698	6,6%	\$9.386	1.846	19,7%
	4250 TEU		\$11.147	\$10.958	\$189 ➡ 1,7%	\$10.173	\$974	9,6%	\$10.002	1.145	11,4%



Disclaimer

The brand NewConTex is copyrighted by Vereinigung Hamburger Schiffsmakler und Schiffsagenten e.V. ("VHSS e.V.") and is protected by law. The NewConTex may be published only with the source reference © VHSS e.V. It is distributed to the general public for information purposes only and cannot be relied upon as a trading recommendation and does not constitute a solicitation to trade. The reported information is obtained from market sources. While every effort has been made to ensure the accuracy and the completeness of the NewConTex, VHSS e.V. makes no representations, conditions or warranties of any kind, express or implied, about the completeness, accuracy, reliability, or suitability of the NewConTex. Any reliance you place on the NewConTex is therefore strictly at your own risk. Neither VHSS e.V. nor any of its subsidiaries or affiliates nor any employee of the foregoing shall be liable or have any responsibility for any loss, liability or damage, cost or expense including without limitation, indirect or consequential loss or damage, or any loss or damage whatsoever arising from loss of data or profits arising out of, or in connection with, the use of and the reliance on the NewConTex, save for death or personal injury arising from VHSS e.V. negligence and fraudulent misrepresentation that cannot, under German law, be excluded.