



New ConTex Container Ship Time Charter Assessment Index

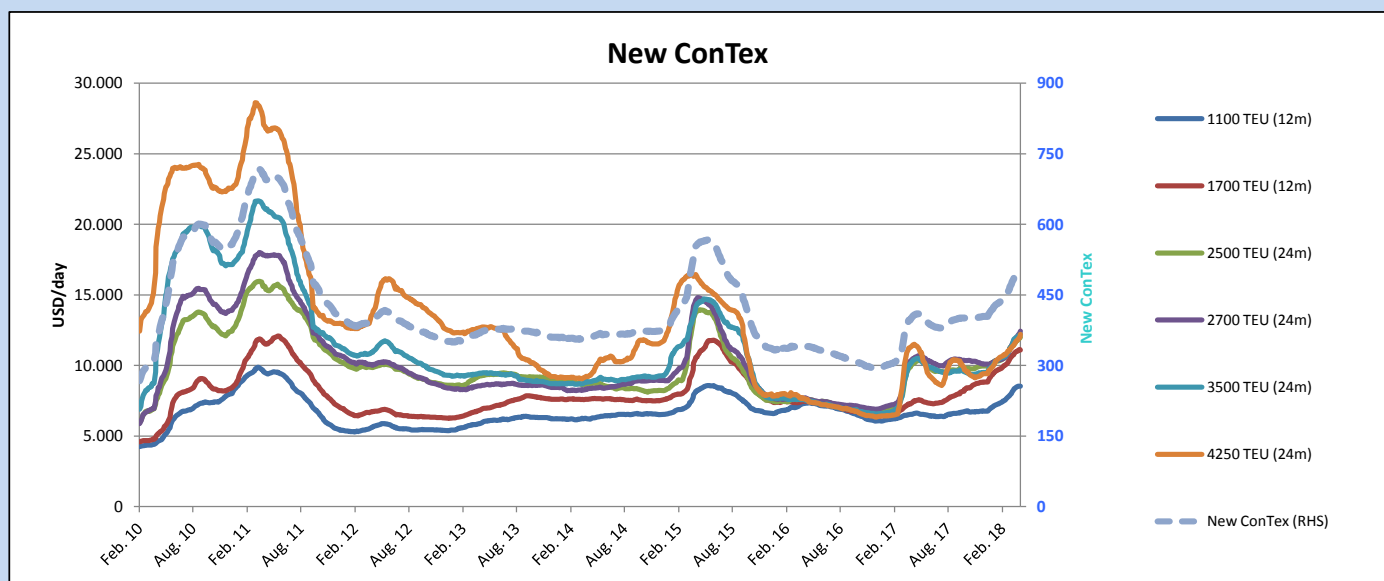
New ConTex*		505	
26.04.18		12 mos	24 mos
Geared	1100 TEU	\$8.522	n.a.
	1700 TEU	\$11.095	
	2500 TEU	\$10.981	\$11.995
Gearless	2700 TEU	\$11.428	\$12.438
	3500 TEU	\$11.106	\$12.213
	4250 TEU	\$10.958	\$12.211

Legend		
↑	up	+ 2% or more
↗	steady up	from +1% to +1,9%
→	steady	+/- 1%
↘	steady down	from -1% to -1,9%
↓	down	- 2% or less

*New ConTex evaluation is EXCLUDING
2500/2700/3500/4250 TEU groups for
12 months period

New ConTex-Commentary - issued:		26.04.18
<p>The new ConTex index increased 5 points to stand at 505 points. This is a 25.3% year-on year increase and the highest it has been at since 30th July 2015.</p> <p>The 1100s were the only sector to show a negative change this week, falling slightly by -0.2%, despite most fixtures in this size being in line with last done. Otherwise all other sectors increased again over both 12 and 24 month periods.</p> <p>1700s had a marginal increase of 0.3% in the last week. There seems to be some signs of weakening in Asia for this size, although rates in Europe and the Caribbean for this sector remain firm. The year-on-year increase now stands at 51.1%, the biggest increase amongst all sectors.</p> <p>The 2500, 2700 & 3500 sectors all increased between 1% and 2% this week, in both 12 and 24 month periods. This was reflective in the market, with many fixtures in this size being concluded between \$11500-\$1200.</p> <p>There seems to be a shortage of vessels available in these sizes and consequently we might see further increases in these sectors in the near future.</p> <p>The 4250s were the biggest movers this week, with a 2.8% increase for 12 month periods and a 3% increase for 24 months periods.</p>		

New ConTex Development											
Vessel type		Evaluated Period	Today	Week-on-Week			Month-on-Month			Year-on-Year	
			26.04.18	19.04.18	Change	Change	27.03.18	Change	Change	25.04.17	Change
New ConTex*			505	500	5	1,0%	473	32	6,8%	403	102
New ConTex	1100 TEU	12 mos	\$8.522	\$8.539	-\$17	-0,2%	\$8.002	\$520	6,5%	\$6.545	1.977
	1700 TEU		\$11.095	\$11.067	\$28	0,3%	\$10.615	\$480	4,5%	\$7.345	3.750
	2500 TEU	24 mos	\$11.995	\$11.868	\$127	1,1%	\$11.361	\$634	5,6%	\$10.066	1.929
	2700 TEU		\$12.438	\$12.168	\$270	2,2%	\$11.387	\$1.051	9,2%	\$10.448	1.990
	3500 TEU		\$12.213	\$12.084	\$129	1,1%	\$11.356	\$857	7,5%	\$10.278	1.935
	4250 TEU		\$12.211	\$11.855	\$356	3,0%	\$11.242	\$969	8,6%	\$11.388	823
	2500 TEU	12 mos	\$10.981	\$10.869	\$112	1,0%	\$10.390	\$591	5,7%	\$9.284	1.697
	2700 TEU		\$11.428	\$11.202	\$226	2,0%	\$10.402	\$1.026	9,9%	\$9.493	1.935
	3500 TEU		\$11.106	\$10.936	\$170	1,6%	\$10.243	\$863	8,4%	\$9.322	1.784
	4250 TEU		\$10.958	\$10.664	\$294	2,8%	\$9.993	\$965	9,7%	\$10.002	956



Disclaimer

The brand NewConTex is copyrighted by Vereinigung Hamburger Schiffsmakler und Schiffsagenten e.V. ("VHSS e.V.") and is protected by law. The NewConTex may be published only with the source reference © VHSS e.V. It is distributed to the general public for information purposes only and cannot be relied upon as a trading recommendation and does not constitute a solicitation to trade. The reported information is obtained from market sources. While every effort has been made to ensure the accuracy and the completeness of the NewConTex, VHSS e.V. makes no representations, conditions or warranties of any kind, express or implied, about the completeness, accuracy, reliability, or suitability of the NewConTex. Any reliance you place on the NewConTex is therefore strictly at your own risk. Neither VHSS e.V. nor any of its subsidiaries or affiliates nor any employee of the foregoing shall be liable or have any responsibility for any loss, liability or damage, cost or expense including without limitation, indirect or consequential loss or damage, or any loss or damage whatsoever arising from loss of data or profits arising out of, or in connection with, the use of and the reliance on the NewConTex, save for death or personal injury arising from VHSS e.V. negligence and fraudulent misrepresentation that cannot, under German law, be excluded.