



New ConTex Container Ship Time Charter Assessment Index

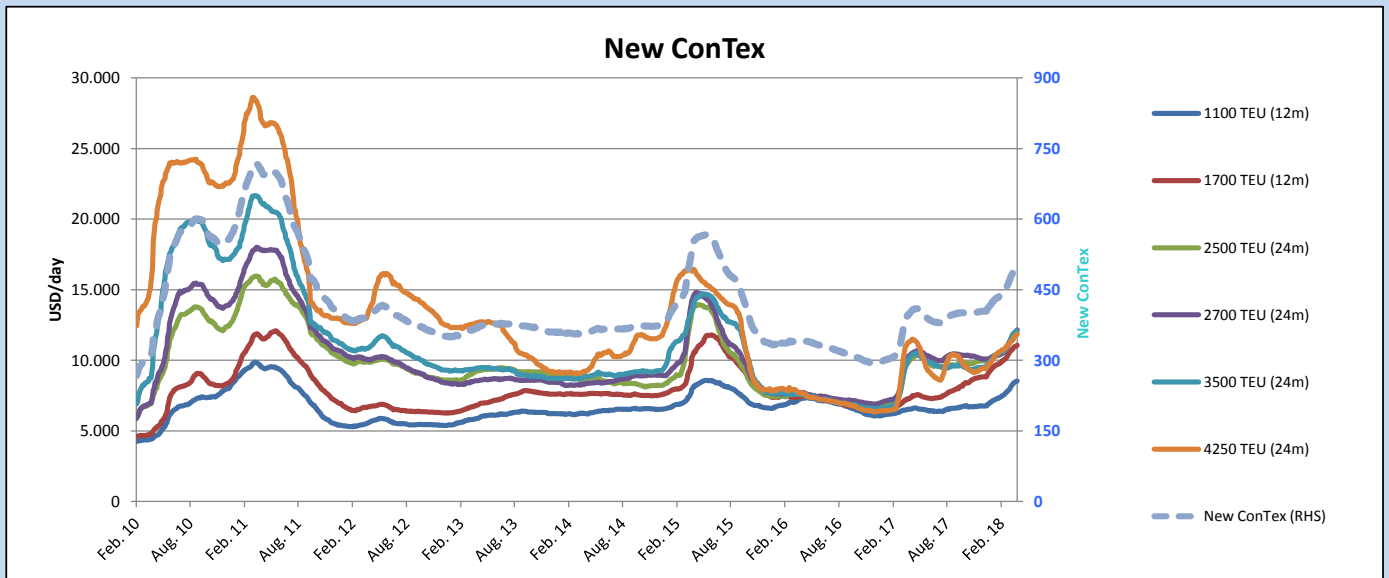
New ConTex*		500	
		12 mos	24 mos
Gearless	1100 TEU	\$8.539	n.a.
	1700 TEU	\$11.067	
	2500 TEU	\$10.869	\$11.868
Gearless	2700 TEU	\$11.202	\$12.168
	3500 TEU	\$10.936	\$12.084
	4250 TEU	\$10.664	\$11.855

Legend		
↑	up	+ 2% or more
↗	steady up	from +1% to +1,9%
→	steady	+/- 1%
↘	steady down	from -1% to -1,9%
↓	down	- 2% or less

*New ConTex evaluation is EXCLUDING 2500/2700/3500/4250 TEU groups for 12 months period

New ConTex-Commentary - issued:	19.04.18
<p>This week has seen the New ConTex Index reach 500 points, a figure last recorded at the end of July 2015. The pace of the recovery is, however, slowing and many market watchers are adopting the view that the market is most likely to reach a level soon where it will stabilise over the northern summer months. Whilst the supply of ships in certain sizes and in certain areas remains very tight the overall supply of tonnage to the market is actually rising again, slowly. Conversely the level of enquiry from operators is broadly steady.</p> <p>The smaller 1100 TEU and 1700 TEU segments have made rather modest gains (just shy of 1% on the week) basis 12 months' employment, whereas the 2700 TEUs gained a respectable 1.3% on the week. The 2700 TEUs also achieved the biggest gain basis 24 months' employment with a 1.3% rise on the week. The largest gain was scored by the 4250 TEUs which, basis 12 months' employment, gained a healthy 2.1% on the week. The 4250 TEU sector continues to be the class of tonnage experiencing the greatest fluctuation in rate levels.</p>	

		New ConTex Development										
Vessel type	Evaluated Period	Today	Week-on-Week				Month-on-Month			Year-on-Year		
		19.04.18	12.04.18	Change	Change	20.03.18	Change	Change	18.04.17	Change	Change	
New ConTex*		500	495	5	↗	1,0%	463	37	8,0%	397	103	25,9%
New ConTex	1100 TEU	\$8.539	\$8.467	\$72	↗	0,9%	\$7.848	\$691	8,8%	\$6.529	2.010	30,8%
	1700 TEU	\$11.067	\$10.978	\$89	↗	0,8%	\$10.403	\$664	6,4%	\$7.254	3.813	52,6%
	2500 TEU	\$11.868	\$11.731	\$137	↗	1,2%	\$11.144	\$724	6,5%	\$9.879	1.989	20,1%
	2700 TEU	\$12.168	\$12.013	\$155	↗	1,3%	\$11.070	\$1.098	9,9%	\$10.310	1.858	18,0%
	3500 TEU	\$12.084	\$11.986	\$98	↗	0,8%	\$11.087	\$997	9,0%	\$10.064	2.020	20,1%
	4250 TEU	\$11.855	\$11.735	\$120	↗	1,0%	\$11.083	\$772	7,0%	\$11.274	581	5,2%
	2500 TEU	\$10.869	\$10.733	\$136	↗	1,3%	\$10.140	\$729	7,2%	\$9.107	1.762	19,3%
	2700 TEU	\$11.202	\$11.035	\$167	↗	1,5%	\$9.993	\$1.209	12,1%	\$9.402	1.800	19,1%
	3500 TEU	\$10.936	\$10.774	\$162	↗	1,5%	\$9.972	\$964	9,7%	\$9.201	1.735	18,9%
	4250 TEU	\$10.664	\$10.443	\$221	↑	2,1%	\$9.820	\$844	8,6%	\$9.959	705	7,1%



Disclaimer

The brand NewConTex is copyrighted by Vereinigung Hamburger Schiffsmakler und Schiffsagenten e.V. ("VHSS e.V.") and is protected by law. The NewConTex may be published only with the source reference © VHSS e.V. It is distributed to the general public for information purposes only and cannot be relied upon as a trading recommendation and does not constitute a solicitation to trade. The reported information is obtained from market sources. While every effort has been made to ensure the accuracy and the completeness of the NewConTex, VHSS e.V. makes no representations, conditions or warranties of any kind, express or implied, about the completeness, accuracy, reliability, or suitability of the NewConTex. Any reliance you place on the NewConTex is therefore strictly at your own risk. Neither VHSS e.V. nor any of its subsidiaries or affiliates nor any employee of the foregoing shall be liable or have any responsibility for any loss, liability or damage, cost or expense including without limitation, indirect or consequential loss or damage, or any loss or damage whatsoever arising from loss of data or profits arising out of, or in connection with, the use of and the reliance on the NewConTex, save for death or personal injury arising from VHSS e.V. negligence and fraudulent misrepresentation that cannot, under German law, be excluded.