



New ConTex Container Ship Time Charter Assessment Index

New ConTex*		456	
15.03.18		12 mos	24 mos
Gearing	1100 TEU	\$7.764	n.a.
	1700 TEU	\$10.216	
	2500 TEU	\$9.933	
Gearless	2700 TEU	\$9.812	\$10.908
	3500 TEU	\$9.779	\$10.888
	4250 TEU	\$9.722	\$11.035

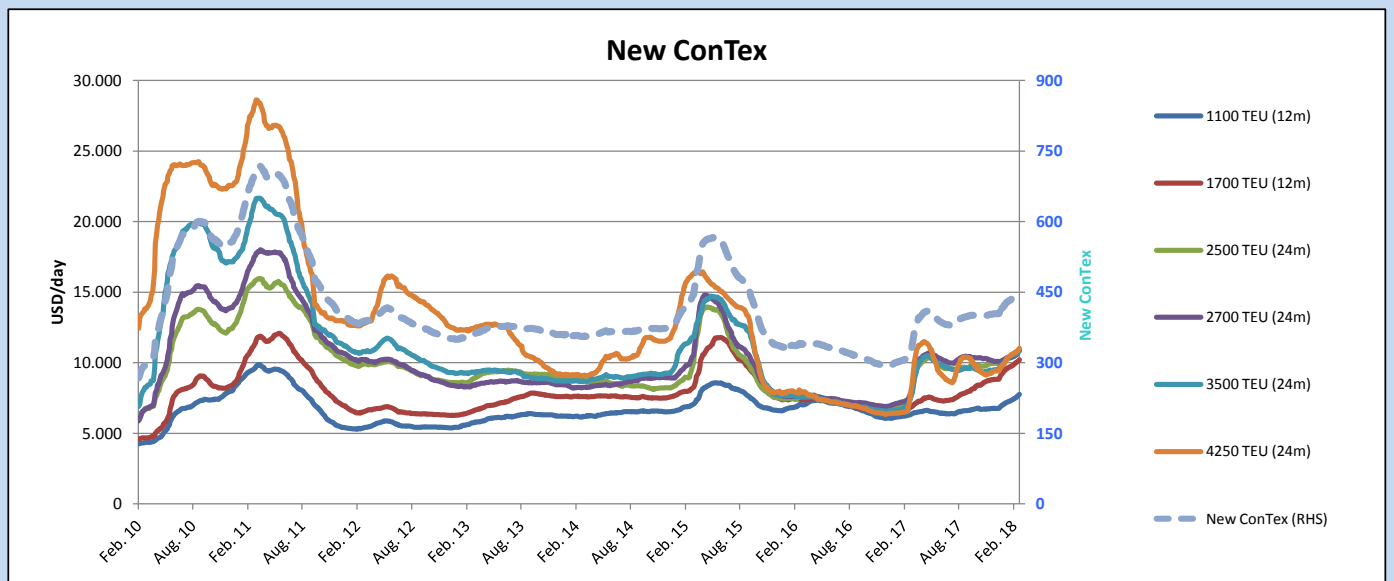
Legend		
↑	up	+ 2% or more
↗	steady up	from +1% to +1,9%
→	steady	+/- 1%
↘	steady down	from -1% to -1,9%
↓	down	- 2% or less

*New ConTex evaluation is EXCLUDING
2500/2700/3500/4250 TEU groups for
12 months period

New ConTex-Commentary - issued:	15.03.18
<p>The New ConTex index continues its upward trend and reached 456 points (+7). A busy charter market and a nearly full employed tramp container fleet is further supporting the market recovery.</p> <p>All New ConTex segments registered gains in the region of 1 - 2.3% w-o-w. The biggest winner is the 2.500 TEU segment which increased by 2.3% w-o-w (basis 12 mos evaluation) backed by healthy demand and a solid number of fixtures including new benchmarks.</p> <p>Even though the Alphaliner idle fleet increased within the last month due to the Chinese New Year aftermath the current level is not expected to last long. The liner-controlled idle capacities should shrink soon after the vessels will re-join their trades in the coming weeks. The remarkably busy charter market is also triggering the decrease of idle tramp vessels.</p> <p>Notable the operators appearing on the list of reported fixtures since early March are broadly mixed. Beside the "Big Three" (Maersk, CMA CGM, MSC), CHINA COSCO and ONE all of the TOP 15 liner companies and a bunch of niche carriers are accountable for the high fixing activity, pushing up rates and further balancing the supply and demand situation.</p>	

New ConTex Development

Vessel type	Evaluated Period	Today 15.03.18	Week-on-Week				Month-on-Month			Year-on-Year			
			08.03.18	Change	Change	13.02.18	Change	Change	14.03.17	Change	Change		
New ConTex*		456	449	7	↗	1,6%	433	23	5,3%	320	136	42,5%	
New ConTex	12 mos	1100 TEU	\$7.764	\$7.628	\$136	↗	1,8%	\$7.284	\$480	6,6%	\$6.299	1.465	23,3%
		1700 TEU	\$10.216	\$10.072	\$144	↗	1,4%	\$9.717	\$499	5,1%	\$6.785	3.431	50,6%
		2500 TEU	\$10.908	\$10.708	\$200	↗	1,9%	\$10.347	\$561	5,4%	\$7.519	3.389	45,1%
	24 mos	2700 TEU	\$10.852	\$10.696	\$156	↗	1,5%	\$10.391	\$461	4,4%	\$7.660	3.192	41,7%
		3500 TEU	\$10.888	\$10.776	\$112	↗	1,0%	\$10.459	\$429	4,1%	\$7.304	3.584	49,1%
		4250 TEU	\$11.035	\$10.840	\$195	↗	1,8%	\$10.507	\$528	5,0%	\$7.202	3.833	53,2%
Gearless	12 mos	2500 TEU	\$9.933	\$9.714	\$219	↑	2,3%	\$9.417	\$516	5,5%	\$6.598	3.335	50,5%
		2700 TEU	\$9.812	\$9.678	\$134	↗	1,4%	\$9.407	\$405	4,3%	\$6.707	3.105	46,3%
		3500 TEU	\$9.779	\$9.649	\$130	↗	1,3%	\$9.264	\$515	5,6%	\$6.241	3.538	56,7%
		4250 TEU	\$9.722	\$9.511	\$211	↑	2,2%	\$9.051	\$671	7,4%	\$5.513	4.209	76,3%



Disclaimer

The brand NewConTex is copyrighted by Vereinigung Hamburger Schiffsmakler und Schiffsagenten e.V. ("VHSS e.V.") and is protected by law. The NewConTex may be published only with the source reference © VHSS e.V. It is distributed to the general public for information purposes only and cannot be relied upon as a trading recommendation and does not constitute a solicitation to trade. The reported information is obtained from market sources. While every effort has been made to ensure the accuracy and the completeness of the NewConTex, VHSS e.V. makes no representations, conditions or warranties of any kind, express or implied, about the completeness, accuracy, reliability, or suitability of the NewConTex. Any reliance you place on the NewConTex is therefore strictly at your own risk. Neither VHSS e.V. nor any of its subsidiaries or affiliates nor any employee of the foregoing shall be liable or have any responsibility for any loss, liability or damage, cost or expense including without limitation, indirect or consequential loss or damage, or any loss or damage whatsoever arising from loss of data or profits arising out of, or in connection with, the use of and the reliance on the NewConTex, save for death or personal injury arising from VHSS e.V. negligence and fraudulent misrepresentation that cannot, under German law, be excluded.