



New ConTex Container Ship Time Charter Assessment Index

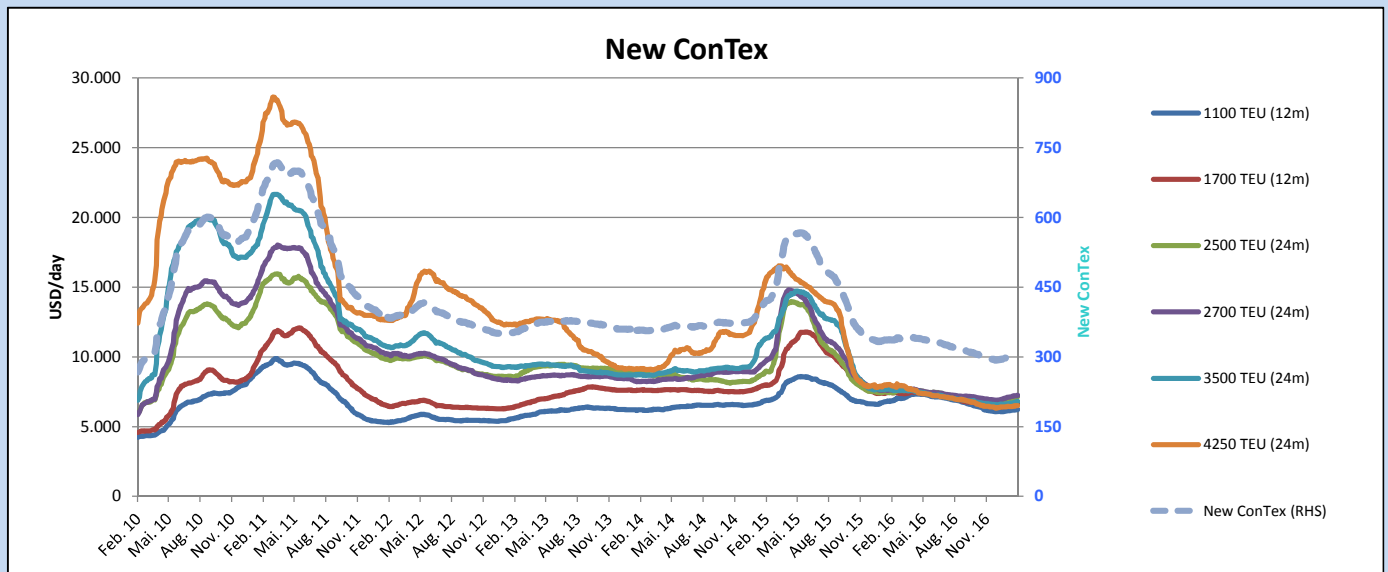
New ConTex*		306	
23.02.17		12 mos	24 mos
Geared	1100 TEU	\$6.221	n.a.
	1700 TEU	\$6.643	
	2500 TEU	\$6.207	
Gearless	2700 TEU	\$6.336	\$7.234
	3500 TEU	\$5.672	\$6.805
	4250 TEU	\$4.372	\$6.496

Legend		
↑	up	+ 2% or more
↗	steady up	from +1% to +1,9%
→	steady	+/- 1%
↘	steady down	from -1% to -1,9%
↓	down	- 2% or less

*New ConTex evaluation is EXCLUDING 2500/2700/3500/4250 TEU groups for 12 months period

New ConTex-Commentary - issued:	23.02.17
<p>The New ConTex followed its trend of the previous weeks and moved another point up compared to the last week. All segments are positive, but below 1% in that period, except the 3500 TEU size which is up 1,3% showing now almost USD 5,600 daily (up USD 73 daily) for the duration of 12 months.</p> <p>Obviously all numbers on a Month-on-Month basis are positive and the New ConTex went up 6 points in that period. On the M-o-M basis the biggest move is seen in the 2500 TEU size being up USD 300 (4,4%) basis 24 months and even USD 331 (5,6%) up basis 12 months evaluation.</p> <p>It seems that so far nobody is getting too excited since the gap between available tonnage and requirements is presently only narrowing and obviously not closed yet. Having said that, over all there are more and more positive signs visible together with an improved activity in the market and a certain tightness of some types of tonnage in specific areas. This will hopefully lead to a continuation of this trend during the next months.</p>	

		New ConTex Development										
Vessel type	Evaluated Period	Today	Week-on-Week		Month-on-Month			Year-on-Year				
		23.02.17	16.02.17	Change	Change	24.01.17	Change	Change	23.02.16	Change	Change	
New ConTex*		306	305	1	→	0,3%	300	6	2,0%	336	-30	-8,9%
New ConTex	1100 TEU	\$6.221	\$6.197	\$24	→	0,4%	\$6.131	\$90	1,5%	\$6.844	-623	-9,1%
	1700 TEU	\$6.643	\$6.628	\$15	→	0,2%	\$6.550	\$93	1,4%	\$7.455	-812	-10,9%
	2500 TEU	\$7.143	\$7.070	\$73	↗	1,0%	\$6.843	\$300	4,4%	\$7.439	-296	-4,0%
	2700 TEU	\$7.234	\$7.210	\$24	→	0,3%	\$7.091	\$143	2,0%	\$7.629	-395	-5,2%
	3500 TEU	\$6.805	\$6.750	\$55	↗	0,8%	\$6.651	\$154	2,3%	\$7.648	-843	-11,0%
	4250 TEU	\$6.496	\$6.493	\$3	→	0,0%	\$6.433	\$63	1,0%	\$7.934	-1.438	-18,1%
	2500 TEU	\$6.207	\$6.137	\$70	↗	1,1%	\$5.876	\$331	5,6%	\$6.026	181	3,0%
	2700 TEU	\$6.336	\$6.304	\$32	↗	0,5%	\$6.207	\$129	2,1%	\$6.260	76	1,2%
	3500 TEU	\$5.672	\$5.599	\$73	↗	1,3%	\$5.411	\$261	4,8%	\$5.870	-198	-3,4%
	4250 TEU	\$4.372	\$4.352	\$20	→	0,5%	\$4.246	\$126	3,0%	\$5.948	-1.576	-26,5%



Disclaimer

The brand NewConTex is copyrighted by Vereinigung Hamburger Schiffsmakler und Schiffsagenten e.V. ("VHSS e.V.") and is protected by law. The NewConTex may be published only with the source reference © VHSS e.V. It is distributed to the general public for information purposes only and cannot be relied upon as a trading recommendation and does not constitute a solicitation to trade. The reported information is obtained from market sources. While every effort has been made to ensure the accuracy and the completeness of the NewConTex, VHSS e.V. makes no representations, conditions or warranties of any kind, express or implied, about the completeness, accuracy, reliability, or suitability of the NewConTex. Any reliance you place on the NewConTex is therefore strictly at your own risk. Neither VHSS e.V. nor any of its subsidiaries or affiliates nor any employee of the foregoing shall be liable or have any responsibility for any loss, liability or damage, cost or expense including without limitation, indirect or consequential loss or damage, or any loss or damage whatsoever arising from loss of data or profits arising out of, or in connection with, the use of and the reliance on the NewConTex, save for death or personal injury arising from VHSS e.V. negligence and fraudulent misrepresentation that cannot, under German law, be excluded.